

'56

The Rock

Gen.

MID-CONTINENT PUBLIC LIBRARY



3 0000 11295531 9

The

Gen.
373
R592



Rock

1956

St. Peter High School

MID-CONTINENT PUBLIC LIBRARY

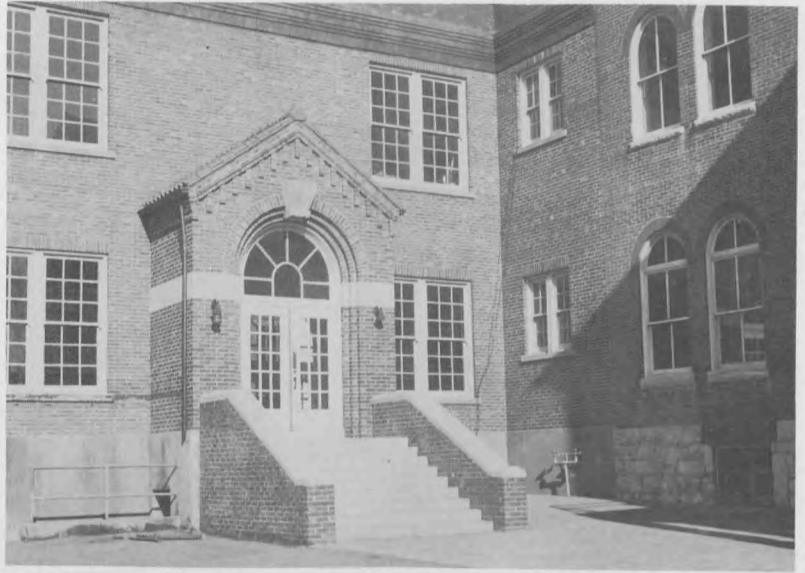
North Independence Branch
Highway 24 & Spring
Independence, MO 64050

NI



Jefferson City Missouri

*High
School*



FRONT
ENTRANCE



A BACK YARD VIEW.

Buildings



UPSTAIRS
AND
DOWN.



Dedication



RT. REV. MONSIGNOR JOSEPH A. VOGELWEID
PASTOR OF ST. PETER PARISH

In appreciation of his great work toward Catholic High School education in Jefferson City, we, the Students of St. Peter High School, wish to dedicate our 1956 ROCK, to the Rt. Rev. Msgr. Joseph A. Vogelweid.

It has been through his labor that this high school was established, and now, with his unbounded help, the new Inter-Parish High School is being completed.

We hope this dedication will serve as a true expression of our most heartfelt thanks and the perpetual remembrance of you in all our prayers.



The Rock Staff

Yearbook Editor, Charles Dudenhoeffer, works at the drawing board to finish the copy layouts.



Girls' Department Representatives.

Boys' Department Representatives.





Administration





SISTER M. ADELAIDE, S.S.N.D.
Principal of the Girls' Department
General Business; Mary's Messenger Moderator

Co-Principals

BROTHER J. NORBERT, F.S.C.
Principal of the Boys' Department
Latin I, II





aculty





BROTHER H. LEWIS, F. S. C.
Assistant Principal

Religion I; English I, III, IV; General Math; Algebra II; Publicity; School Paper.

Faculty



FATHER NORMAN AHRENS
Religion



BROTHER J. EDWARD, F. S. C.

American Government; American History; Sociology;
Eighth Grade Religion, History, Civics, Geography;
Bookstore; Play Drive; Grade School Athletics.

MRS. JAMES GIBBS

Physical Education and Health; Girls' Intramurals;
Pepettes.



1956

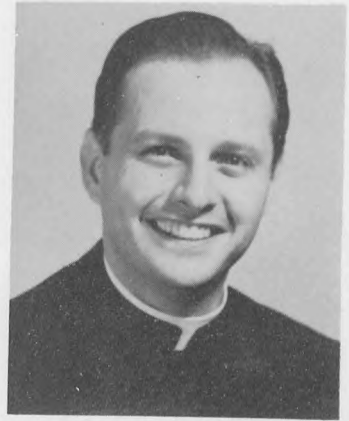


BROTHER LIGUORI, F. S. C.

Religion II, IV; Algebra I; Plane Geometry; Business Math; Wood Shop; Athletic Director.

FATHER FRANCIS STANGL
Assistant Pastor

Religion; Co-moderator of Pepettes.



Faculty

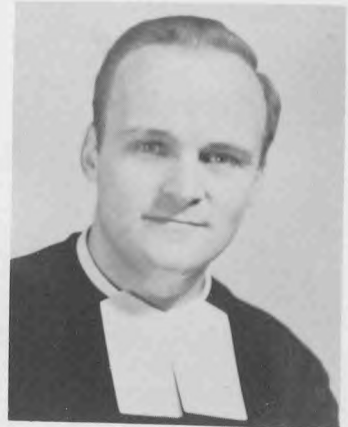
MR. LOUIS J. DES PRES

World History; Citizenship; Missouri History; Band
Director and Instructor; Choir Director.



BROTHER H. EDWIN, F. S. C.

Religion III; Physics; General Science; English II;
Eighth Grade Math.



BROTHER JOEL, F. S. C.

Religion II; English II; General Business; Typing;
School Bookkeeper.



1956

BROTHER J. SEBASTIAN, F. S. C.

Religion III; Bookkeeping I, II; Solid Geometry; Trig-
onometry; Wood Shop I; Free Hand Drawing; Eighth
Grade Basketball.





BROTHER I. TIMOTHY, F. S. C.

Religion I; English I, III; Eighth Grade English; Missouri History; Driver Education, Yearbook Advisor; Homecoming and Coronation; Benildus Club; Junior-Senior Prom; Senior Play.

Faculty

MR. JOHN WARMBRODT

Civics; Boys' Physical Education and Health; Coach of Football, Basketball, and Track.



School Sisters of Notre Dame

SISTER M. PAULINUS

Religion II; Latin I, II; English I, II.

SISTER M. MALACHY

Religion I; Foods; Clothing; Homemaking.

SISTER M. VENTURA

Religion III; Shorthand I; Typing I, II; Secretarial Practice; Junior-Senior Prom and Breakfast.

SISTER M. BLANCHE

Religion IV; English III, IV; World History; Oratory; Rockette Moderator; Dramatics; Mary's Messengers.

SISTER M. OLGA

Religion II; Algebra I; Librarian.

SISTER M. DOLORES

Religion I; English I; Chorus I, II, III, IV.

SISTER M. LALEMANT

Religion III; Algebra I; Geometry; Chemistry; Biology; General Science.

SISTER M. FRIEDA

Religion IV; American History; Contemporary American Problems; Citizenship; Good Counsel Moderator; S. P. C. Civics Club; St. Theresa Civic Club.



eniors





DONNA KNOLLMEYER
President

Attendance 1, 4; Oratory 4; Good Counsel 2, 3, 4;
Mary's Messenger 4; Senior Play; Choral Club 1, 2, 3,
4; Class Officer 4; Pepettes 3, 4; Intramurals 1, 2, 3,
4; Rockette Staff 4.

Senior Class

GLORIA ANN REMICK
Vice President

Attendance 1, 2, 3, 4; Good Counsel 1, 2, 3, 4; Mary's
Messenger 1, 2; Senior Play 4; Choral Club 2, 3; Honor
Roll 4; Class Officer 1, 2, 4; Pepettes 1, 2, 3, 4; Intra-
murals 3, 4.



ANN LOUISE HEMMEL
Secretary

Attendance 1; Good Counsel 1, 2, 4; Mary's Messenger
4; Choral Club 2, 3, 4; Senior Play; Honor Roll 1, 2, 3,
4; Class Officer 1, 2, 4; Pepettes 1, 2, 3, 4; Intramurals
1, 2, 3, 4; Band 1, 2, 3, 4; Rockette Staff 4; NHS 3, 4.



Officers

CAROLYN SUE CARVER
Treasurer

Attendance 3, 4; Good Counsel 1, 2, 3, 4; Choral Club
2, 3; Honor Roll 1, 2, 3, 4; Class Officer 2, 4; Intramur-
als 2; Rockette Staff 4; NHS 3, 4.



CARL W. SCHULZ
President

Oratory 1, 2, 3, 4; Choral Club 1, 2, 3; Class Officer
3, 4; Senior Play 4; Honor Roll 1, 2, 3, 4; Football 1,
2, 3, 4; Basketball 1, 2, 3, 4; Track 1; Intramurals 1.



Senior Class



EDWARD B. BUTLER
Vice President

Choral Club 2; Class Officer 1, 2, 3, 4; Senior Play 4;
Honor Roll 1, 2, 3, 4; Football 1, 2, 3, 4; Basketball 1;
Track 1, 2, 3, 4; Intramurals 1, 2, 3.

MICKEY C. SMITH
Secretary

Attendance 1, 2, 3; Oratory 2, 4; Benildus Club 1, 2, 3,
4; Choral Club 1, 2; Class Officer 1, 2, 3, 4; Senior
Play 4; Intramurals 1, 2, 3, 4; Basketball Manager 2, 3,
4; NHS 3, 4.



Officers



RAYMOND C. HENTGES
Treasurer

Benildus Club 1, 2, 4; Choral Club 1; Class Officer 4;
Honor Roll 3, 4; Football 1, 2, 3, 4; Basketball 1, 2, 3,
4; Track 1.

CARL W. AMEND
Choral Club 1.



*Seniors
of
'56*

ELIZABETH JILL AMOS

Pepettes 1, 4.

JAMES D. BENTON

Attendance 1, 2, 3, 4; Band 1, 2, 3, 4; Ben-ildus Club 2; Intramurals 1; Track 1, 2; Senior Play 4.



DOLORES ANN BERENDZEN

Attendance 4; Good Counsel 3, 4; Honor Roll 1, 3, 4; Class Officer 3; Intramurals 4; Rockett Staff 4.

GRACE BERNSKOETTER

Good Counsel 3, 4; Honor Roll 2, 4; Class Officer 4; Intramurals 2, 3, 4.



ANN LOUISE BLASER

Good Counsel 1, 2, 3, 4; Honor Roll 1, 2, 3, 4; Choral Club 2, 3; Senior Play 4; Pepettes 1, 2, 3, 4; Intramurals 1, 2, 3, 4; Rockette Editor 4.

EVA MAE BRANDT

Good Counsel 1, 2, 3, 4; Honor Roll 1, 3, 4; Choral Club 2, 3; Pepettes 1, 2, 3; Intramurals 1, 2, 3, 4.



*Seniors
of
'56*



JEANNE BRANDT

Attendance 2, 3, 4; Good Counsel 1, 2, 4; Choral Club 2, 4; Honor Roll 3, 4; Band 1, 2; Rockette Staff 4; Intramurals 1, 2, 3, 4.



JULIAN W. BRONDEL

Choral Club 2; Intramurals 1, 2, 3, 4.

PHYLLIS LEE BUSCHMAN

Good Counsel 1, 2, 3, 4; Honor Roll 4; Choral Club 2, 3; Rockette Staff 4; Intramurals 1, 2, 3, 4.

PATRICIA ANN CORRIGAN

Good Counsel 1, 2, 3, 4; Mary's Messenger 2; Choral Club 2, 3; Honor Roll 3; Class Officer 1; Pepettes 1, 2, 3, 4; Intramurals 3; Rockette Staff 4; Queen Attendant 4.

MYRTLE DE BRINE

Attendance 2; Good Counsel 1, 2, 3, 4; Mary's Messenger 2, 3, 4; Senior Play 4; Class Officer 2, 3; Honor Roll 2, 3, 4; Pepettes 1, 2, 3, 4; Intramurals 1, 2, 3.

DONALD J. DULLE

Attendance 1; Football 1, 2; Track 1, 2; Intramurals 1, 2, 3.

DORIS ANN DULLE

Attendance 4; Oratory 4; Good Counsel 1, 2, 3, 4; Mary's Messenger 2, 3; Senior Play 4; Choral Club 2, 3, 4; Honor Roll 2, 3, 4; Class Officer 1, 2, 3, 4; Pepettes 1, 2, 3, 4; Rockette Staff 4; Intramurals 4.



GERALDINE ECKHOFF

Attendance 1, 3, 4; Good Counsel 1, 2, 3, 4; Honor Roll 1, 2, 3, 4.



*Seniors
of
'56*

PAUL L. FEIND

Attendance 2, 3, 4; Benildus Club 1, 2, 3, 4; Choral Club 1, 2; Class Officer 1, 2; Honor Roll 1, 2; Senior Play 4; Football 1, 2, 3, 4; Basketball 1, 2, 3, 4; Track 1, 2, 3, 4.

MARILYN YVONNE FORCK

Attendance 1, 2, 4; Mary's Messenger 4; Oratory 4; Good Counsel 1, 2, 3, 4; Honor Roll 1, 4; Senior Play 4; Choral Club 2, 3; Pepettes 1, 2, 3, 4; Queen Attendant 4; Intramurals 3, 4.

PATRICIA ANN GOELLER

Good Counsel 4; Mary's Messenger 2; Intramurals 2, 3, 4.

CLEMENT I. GRONER

Attendance 4; Honor Roll 1, 2, 3, 4; Intramurals 1, 2, 3, 4.

HERBERT HAAF

Attendance 1; Benildus Club 1; Choral Club 1; Intramurals 1.

FRANCIS A. HAKE

Attendance 1, 2, 4; Band 1, 2; Benildus Club 1; Choral Club 1, 2; Intramurals 1, 2.



*Seniors
of
'56*



MARY HELEN HAMMANN

Sodality of Mary 1, 2, 3;
Legion of Mary.



SIMON P. HARTMAN

Attendance 3; Benildus Club 2, 3, 4;
Choral Club 3; Track 1, 2; Football 2,
3; Intramurals 1, 2, 3, 4.

GENE C. HAZELHORST

Attendance 1, 2, 3; Band 1; Choral Club
1; Football 1, 2, 3, 4; Basketball 1, 2, 3;
Intramurals 1, 2, 3, 4.



MARILYN JEAN HERBRANDT

Attendance 1, 2, 4; Good Counsel 1, 2,
3, 4; Honor Roll 1, 2, 3, 4; Class Officer
3; Intramurals 1, 2, 3, 4; Rockette Staff
4.

NORMA JEAN HERTZING

Attendance 2, 4; Good Counsel 1, 2, 3, 4;
Mary's Messenger 2; Senior Play 4; Class
Officer 2, 4; Pepettes 1, 2, 3, 4; Intramur-
als 1, 2, 3, 4.



FREDERICK B. HINDERER

Attendance 2, 3, 4; Intramurals 1, 2.

KATHERINE SUE HODGE

Class Officer 2, 3; Pepettes 4; Cheerleader
1, 2, 3; Intramurals 1, 2, 3; Entered from
Eugene High School.



ELLA MARIE HUHMANN

Attendance 4; Choral Club
1, 2; Honor Roll 3, 4.



*Seniors
of
'56*



CHARLENE JAMESON

Oratory 4; Good Counsel 1, 2, 3, 4; Mary's
Messenger 2, 3, 4; Senior Play 4; Choral
Club 2, 3, 4; Pepettes 1, 2, 3, 4; Intramur-
als 1, 2; Rockette Staff 4.

MARY ANN KRAMER

Attendance 2, 4; Good Counsel 1, 2, 3, 4;
Choral Club 2, 3, 4; Honor Roll 3, 4; Pep-
ettes 1, 2, 3, 4; Intramurals 1, 2, 3, 4;
Rockette Staff 4.



WILLIAM J. KREMER

Attendance 1, 3, 4; Benildus Club 1, 2, 3,
4; Choral Club 1, 2; Class Officer 2;
Football 1, 2, 3, 4; Basketball 1, 2; Track
1, 2, 3, 4; Intramurals 1, 2, 3, 4.

RICHARD J. KROLL

Choral Club 1; Football 1, 2; Basketball
1, 2; Intramurals 1, 2, 3, 4.



PAUL L. LAUX

Attendance 2, 4; Choral Club 1, 2; In-
tramurals 1, 2.

DOROTHY LEPPER

Attendance 1, 3; Good Counsel 1, 2, 3, 4;
Honor Roll 1; Intramurals 1, 2, 3; Rock-
ette Staff 4.



*Seniors
of
'56*



PAUL D. LIBBERT

Attendance 1, 2, 3, 4; Ben-ildus Club 1, 2, 3, 4; Choral Club 2, 3; Football 3, 4; Basketball 1, 2, 3; Track 3; Intramurals 1, 2, 3, 4; Senior Play 4.



ARLENE ELIZABETH LOCK

Good Counsel 1, 2, 3, 4; Intramurals 2, 4.

DONALD O. LUEBBERING

Choral Club 2, 3; Honor Roll 1, 2, 3, 4.



GERALD T. MCKINNEY

Choral Club 2, 3; Intramurals 1, 2, 3.

ALICE MARIE McMICHAEL

Good Counsel 1, 2, 3, 4; Honor Roll 3, 4; Senior Play 4; Rockette Staff 4; Intramurals 3.



STANLEY J. MENGWASSER

Attendance 3, 4; Senior Play 4; Honor Roll 3, 4; Intramurals 3, 4.

MARILYNN CORINNE MICHELS

Good Counsel 1, 2, 3, 4; Mary's Messenger 1, 2, 3, 4; Choral Club 2, 3, 4; Honor Roll 4; Pepettes 1, 2, 3, 4; Intramurals 2, 3, 4; Band 1, 2, 3, 4; Queen Attendant 4.



Seniors of '56

RUTH JANE MOELLER

Attendance 4; Good Counsel 1, 2, 3, 4; Mary's Messenger 2; Pepettes 2, 3, 4; Intramurals 1, 2.

JOHN J. MORRIS

Oratory 1, 2; Band 1, 2, 3; Benildus Club 1, 2, 3, 4; Choral Club 1, 2; Class Officer 1, 2, 3; Senior Play 4; Honor Roll 1, 2; Football 1, 2, 3, 4; Track 1, 2, 3; Intramurals 1, 2, 3, 4.

JEANETTE ELAINE NOONAN

Attendance 3, 4; Oratory 4; Good Counsel 1, 2, 3, 4; Mary's Messenger 2, 3, 4; Senior Play 4; Honor Roll 2; Class Officer 1, 3; Pepettes 1, 2, 3, 4; Cheerleader 2, 3, 4; Rockette Staff 4; Queen Attendant; Intramurals 1, 2, 3, 4.

HENRIETTA OIDTMAN

Attendance 2, 4; Good Counsel 1, 2, 3, 4; Senior Play; Class Officer 3; Pepettes 1, 2, 3, 4; Intramurals 1, 2, 3, 4.

RICHARD D. OIDTMAN

Attendance 1, 4; Benildus Club 1, 2.

THOMAS G. OTKE

Choral Club 1, 2; Football 1, 2; Intramurals 1, 2, 3, 4.

PATRICIA MARIE OWENS

Good Counsel 1, 2, 3, 4; Pepettes 1, 2, 3, 4; Rockette Staff 4; Intramurals 4.

BETTY LOU PASCHAL

Good Counsel 3; Intramurals 1.



Seniors of '56



MILDRED SUE PASCHAL

Attendance 1, 4; Good Counsel 2; Class Officer 4; Intramurals 2, 3, 4.

MARY ANN PATTERSON

Good Counsel 1, 2, 3, 4; Mary's Messenger 2; Choral Club 2, 3; Honor Roll 1, 4; Class Officer 1; Pepettes 1, 2, 3, 4; Rockette Staff 4; Intramurals 3.



FREDERIC C. PECHER

Benildus Club 1, 2, 3; Choral Club 1, 2; Senior Play; Track 1, 4; Intramurals 1, 2; Student Manager 4.

LORENE CATHERINE PIRNER

Attendance 1, 2, 3, 4; Good Counsel 1, 2; Intramurals 1, 2, 3, 4.



BETTY JOAN PLOGSTED

Attendance 4; Good Counsel 1, 2, 3, 4; Mary's Messenger 2; Senior Play; Choral Club 2, 3, 4; Honor Roll 1, 2, 3, 4; Pepettes 1, 2, 3, 4; Rockette Staff 4.

BETTY JO PORTING

Attendance 3; Good Counsel 1, 2, 3; Pepettes 1, 2; Intramurals 1.



PATRICIA RACKERS

Attendance 1, 2, 3, 4; Good Counsel 2, 3, 4; Intramurals 1, 2, 3, 4.

HENRY L. RAUBER

Attendance 1, 2, 3, 4; Choral Club 3; Benildus Club 1, 2, 3, 4; Senior Play; Football 1; Track 1, 2, 3; Intramurals 2, 3, 4.



Seniors of '56

LOUIS C. REPHLO

Attendance 4; Oratory 4; Benildus Club 1, 2, 3, 4; Choral Club 1, 2; Senior Play; Honor Roll 1, 2, 3, 4; Intramurals 1, 2, 3.

CAROL LOUISE RUSH

Attendance 2, 4; Good Counsel 3, 4; Senior Play; Honor Roll 3, 4; Pepettes 3, 4; Intramurals 3, 4; Rockette Staff 4.

CAROL ANN SCHELL

Honor Roll 3; Intramurals 1, 2, 3, 4.

BETTY LOU SCHMUTZLER

Entered from St. Margaret Parish Osage Bend.

PAULINE MARGARET SCHULTE

Attendance 3, 4; Good Counsel 1, 2, 3, 4; Pepettes 1, 2, 3, 4; Rockette Staff 4; Intramurals 1, 2, 3, 4.

KENNETH E. SCOTT

Benildus Club 1; Oratory 1; Senior Play; Choral Club 1, 3; Class Officer 1, 3; Football 1, 2, 3, 4; Track 1, 2, 3, 4; Intramurals 1, 2, 3, 4.

SUE SICKINGER

Good Counsel 1, 2, 3, 4; Intramurals 1, 2.

ROSEMARY SOMMERS

Attendance 4; Good Counsel 2, 4; Class Officer 1; Intramurals 3, 4.



Seniors of '56

BETTY JEAN STARKE

Attendance 1; Good Counsel 1, 2, 3, 4; Senior Play; Honor Roll 3, 4; Pepettes 1, 2, 3, 4; Band 1, 2, 3, 4; Rockette Staff 4; Intramurals 1, 2, 3, 4.

BONNIE LEE STARKE

Good Counsel 4; Choral Club 1, 2, 3, 4; Pepettes 1, 2, 3, 4.

BARBARA ANN STOKES

Good Counsel 1, 2, 3, 4; Mary's Messenger 2; Senior Play; Honor Roll 3; Intramurals 2, 3, 4.

ROGER J. STROPE

Choral Club 1, 2; Honor Roll 4; Football 1, 3, 4; Intramurals 1, 2, 3, 4.

RUTH MARIE STROPE

Good Counsel 4; Honor Roll 3, 4; Class Officer 3; Queen Attendant; Intramurals 1, 2, 3, 4.

JOYCELYN LOUISE TELLMAN

Attendance 2; Good Counsel 4; Cheerleader 2, 3; Entered from Eugene High School.

JOANN TEMMEN

Attendance 3, 4; Good Counsel 1, 2, 3, 4; Mary's Messenger 2; Senior Play; Pepettes 1, 2, 3, 4; Cheerleader 2, 3, 4; Intramurals 1, 2, 3, 4.

DELORES VEIT

Attendance 2, 4; Good Counsel 1, 2, 3, 4; Honor Roll 4; Intramurals 1, 2, 3, 4.



*Seniors
of
'56*



MARY DOLORES VEIT

Attendance 1, 2, 3, 4; Good Counsel 1, 2, 3, 4; Honor Roll 1, 2, 3, 4; Class Officer 1; Rockette Staff 4; Intramurals 1, 2, 3, 4.



CAROLYN CORINA VETTER

Attendance 2, 3; Good Counsel 1, 2, 3, 4; Senior Play; Choral Club 2, 3; Class Officer 2, 3; Pepettes 1, 2, 3, 4; Intramurals 1, 2, 3, 4.

DORLENE MARIE VOGEL

Good Counsel 1, 2, 3, 4; Mary's Messenger 1, 2, 3, 4; Honor Roll 3, 4; Class Officer 1, 2; Pepettes 1, 2, 3, 4; Drum Major 3, 4; Football Queen; Band 1, 2, 3, 4; Intramurals 1; Rockette 4.



KENNETH R. WERNER

Attendance 1; Benildus Club 1, 2; Choral Club 1, 2; Class Officer 2; Senior Play; Football 1; Basketball 1; Track 1; Honor Roll 2; Intramurals 1, 2, 3.

MARLYN DEE WHITECOTTON

Attendance 1, 4; Oratory 4; Good Counsel 1, 2, 3, 4; Mary's Messenger 3, 4; Senior Play; Choral 1, 2, 3; Honor Roll 4; Pepettes 1, 2, 3, 4; Rockette 4; Intramurals 3, 4.



THOMAS E. WHITECOTTON

Attendance 1, 2, 3, 4; Band 2, 3; Benildus Club 1, 2, 3, 4; Choral 1, 2, 3; Senior Play; Football 3, 4; Track 2, 3; Intramurals 1, 2, 3, 4.

BETTY JEAN WOLTERS

Good Counsel 1, 2, 3, 4; Pepettes 2, 3, 4; Choral 2, 3, 4; Honor Roll 3; Mary's Messenger 2; Intramurals 2.





uníors



Juniors

CHRISTINE ANGENENDT
MAYR JANE BARRY
BEVERLY BECKER
JEAN ANNE BERENDZEN

NORMA BERSNKOETTER
MARY ANN BISGES
RUTH CATH. BISGES
JOYCE BOSCH

LORETTA BRAUNER
CATHERINE CANAN
MARY EILEEN DETERS
GAIL MARG. DETHROW

RUTH DISTLER
CAROLYN DULLE
RENILDA EPPLE
MICHAEELEN EVELER

AGNES EVERS
JUDY ANN FAUSELL
MARIE FINKE
MARY FRANK

MARGIE GERLING
MARY KAY GOVRO
JUDITH GRAESSLE
CAROL ANN HATTING



Juniors

JANICE HAYS
 BILLIE MARIE HEMMEL
 LORETTA HERTZING
 NORMA HORSTDANIEL



JONETT JANSEN
 LORENE KAMPETER
 HARRIET KOESTER
 MARY ANN KOPP



ANN LEAH LAUF
 JO ANN LEHMAN
 JEAN MARIE MEYER
 CATHERINE MUELLER



MARY ANN NEUMANN
 HELEN NEVINS
 PATRICIA OWSLEY
 JO ANN POETKER



CAROLYN PRENGER
 MARILYN RACKERS
 CONSTANCE REICHART
 RUTH ROCKERS



ARLENE SCHENEWERK
 DOLORES SCHEPKER
 JOANN SCHMIDT
 MARGARET SCHMITZ

Juniors



MARY ANN SCHULTE
CAROLYN SCOTT
THERESA SCRIVNER
MARILYN SIBENECK



PATRICIA SPIEKER
SHIRLEY STEUBER
HELGA STIPA
MARJORIE STROPE



JANE SUMMERS
JOANN THRASH
BRENDA VAUGHN
SHIRLEY VIVION

SHIRLEY VOSS
EILEEN WADE
DONNA MARY WELLS



JOSEPH BOONE
MIKE BRETTSCHNEIDER
JOHN BURLBAW
LEONARD BUSCHJOST



STEPHEN CASPARI
JAMES CRADER
JEROME CREMER
WILLIAM DEEKEN



Juniors

ROBERT DONEHUE
ALBAN DORGE
CHARLES DUDENHOEFFER
ROBERT DULLE



MARK EVELER
DONALD FORCK
RONALD FORCK
WILLIAM HAKE



CHARLES HARTMAN
FRED HENTGES
JOHN HENTGES
GENE HILKEMEYER



DONALD HIRSCH
RONALD IRWIN
DALE KLIETHERMES
BOB KLIETHERMES



JIM KLIETHERMES
JIM KROLL
JIM LOETHEN
JOSEPH MAHLAN



JAMES MARKWAY
JOHN McELWAIN
GENE MCKINNEY
PAUL MERTENS

Juniors

RICHARD MURPHY
ADRIAN PARRIS
DAVID PATTERSON

BERNARD PRENGER
STEVE PRENGER
FRED RACKERS
HERMAN RACKERS

THOMAS ROTHOVE
HERB RUSTEMEYER
EDWARD SCHEPKER
BEN SCHRIMPF

RICHARD SCHRIMPF
JAMES SCHULTE
EUGENE STEGEMAN
LEON STOKES

FRED STRAUB
SAM STRUEMPF
RONALD TRIPENSEE
BERNARD UPSCHULTE

JACK VAN LOO
JAMES VEITH
NELSON VILES
JEROME WEILER





sophomores



Sophomores



Mary Frances Bacon
Judy Balkenbusch
Patricia Benne



Arlene Bernskoetter
Juanita Bock
Darlene Bonnot
Anna Marie Braden



Theresa Brown
Dolores Colvin
Mary Kay Corrigan
Mary Bob Couch



Mary Jack Dulle
Betty Jo Dwight
Henrietta Feind
Marilyn Frank



Marilyn Franken
Marilyn Gorman
Judy Hamacher
Martha Hammann



Marian Hays
Betty Hentges
Judith Hiesberger
Sue Ann Jordan



Bernice Kliethermes
Sandra Kolb
Betty Jo Kramer
Mary Laux

Sophomores

Elaine Linhardt
Alma Loethen
Betty Lou Loethen



Carol Ann Magee
Carol Mehmert
Dolorea Meisel
Betty Mertens



Helen Mertens
Virginia Meyer
Mary Mullen
Judy Neutzler



Mary Ann Otto
Kathy Pierson
Barbara Renn
Mary Ann Samson



Carol Schellman
Ester Schepers
Marilyn Schmidt
Betty Schmitz



Carolyn Schneider
Patricia Schneider
Mary Schwaller
Helen Schwartz



Irene Schwartz
Emilie Slicker
Agnes Ann Suthoff
Helen Van Loo



Sophomores



Ellen Vogel
Patricia Voracek



Yovetta Wansing
Monica Williams
Thomas Amos



Robert Bemboon
Robert Boessen
Delbert Bolten
James Brenneke



James Butler
Walter Butler
Terry Des Pres
Ivan Diemler



Dennis Distler
Clem Dulle
James Dunn
James Evers



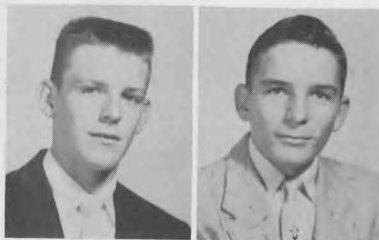
Eugene Fennewald
Bernard Groner
John Hall
William Kaiser



Robert Kliegel
Daniel Krolick
Jerry Lammers
Paul Leslie

Sophomores

David Loehner
Donald Luebbert



Jack Menges
Delmer Nilges
Jerry Owens



Jerry Patterson
James Poetker
William Prenger
George Safire



Daniel Scherer
Eugene Schmitz
William Schmitz
Thomas Schneiders



Darrell Schrimpf
William Schrimpf
Jay Scheuleter
Charles Schulte



John Schwaller
Joseph Smith
Gilbert Strobe
William Stokes



Bob Vanderfeltz
Paul Van Loo
James Verhoff
Ronald Wolken





reshmen



Freshmen

Theresa Adrian
Margaret Amend
Jane Andrae



Ann Becker
Sandra Bosch
Ann Braun
Joan Bruegging



Gloria Bruemmer
Donna Buersmeyer
Virginia Buschman
Shirley Cassmeyer



Marilyn Champlain
Patricia Connor
Bernice Derkum
Jean Drew



Elaine Dulle
Joan Eddy
Elaine Fassbinder
Charlene Frank



Shirley Gemeinhardt
Lynne Rose Hager
Ann Hall
Patricia Hartman



Carol Hays
Mary Ann Healey
Darlene Heislen
Patricia Hentges



Freshmen



Jean Hiesberger
Alice Kaiser



Karen Keller
Doris Mae Koelling
Mary Kroll
Theresa Lischive



Joyce Loehner
Martha Loethen
Rosella Loethen
Mary Ann Luebbering



Mary Ann Markway
Norma McDowell
Louise Meisel
Barbara Mertens



Mary Ann Mertens
Dolores Moeller
Mary Jane Nentwig
Dorothy Patterson



Ruth Ann Prenger
Clara Ann Rackers
Evelyn Rackers
Judy Renn



Janet Robinett
Emily Rodeman
Betty Schell
Rita Schenewerk

Freshmen

Carol Schepker
Pattie Sue Scherr



Bernadine Schwartz
Judy Schwartz
Linda Scott
Ingrid Stipa



Ann Stockman
Marilyn Strobe
Margaret Sturm
Mary Jo Suttner



Vernalea Tellman
Charlaine Tucker
Marilyn Van Loo
Jane Vogel



Alma Voss
Dolores Wagner
Nancy Wansing
Patricia Wickers



Jane Wilbers
Jo Ann Wolken
Jerilyn Walters
Gerald Bernskoetter



Kenneth Bernskoetter
Herbert Blume
Roger Braun
Gary Buehler



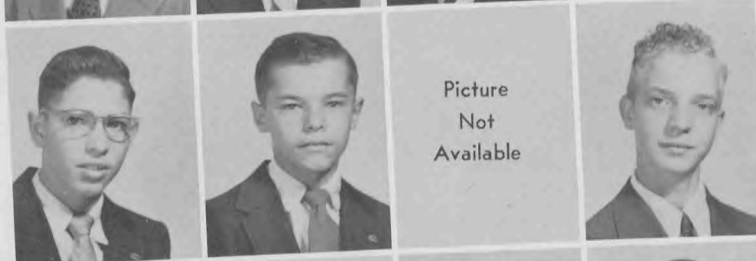
Freshmen



Richard Crader
William Cremer



James DeLong
Mike Dorge
Richard Dulle



Picture
Not
Available

Bernard Forck
Larry Gnagi
Robert Groner
John Haaf



Harold Hagner
Clarence Heckman
Joseph Hemmel
William Hentges



Donald Hoelscher
Robert Huber
Robert Kauffman
Mark Koenig



Thomas Kremer
Jerome Lehmen
Patrick Lock
Reuben Luebbering



Charles Luebbert
Ben Mankin
David Munzell
James Nevins

Freshmen

Kenneth Oidtman
Marvin Orthmeyer



Stephen Owens
Thomas Parris
William Pohl



Ronald Prenger
James Reichart
Arthur Rackers
David Rosner



William Rush
Jerome Sankey
Gilbert Schellman
Donald Schenewerk



Raymond Schmidt
James Schmitz
Lawrence Schrimpf
George Schulte



Robert Schulte
Stanley Schulte
David Schwaller
James Swearingen



Ralph Voss
Charles Weaver
Thomas Wisch
Gary Zeilman





lasses





Science





*Business
Practice*



Typing



Bookkeeping



English



Religion



Latin





Social



Studies





Home Economics



*Driver Ed.
Wood Shop*





Boys'



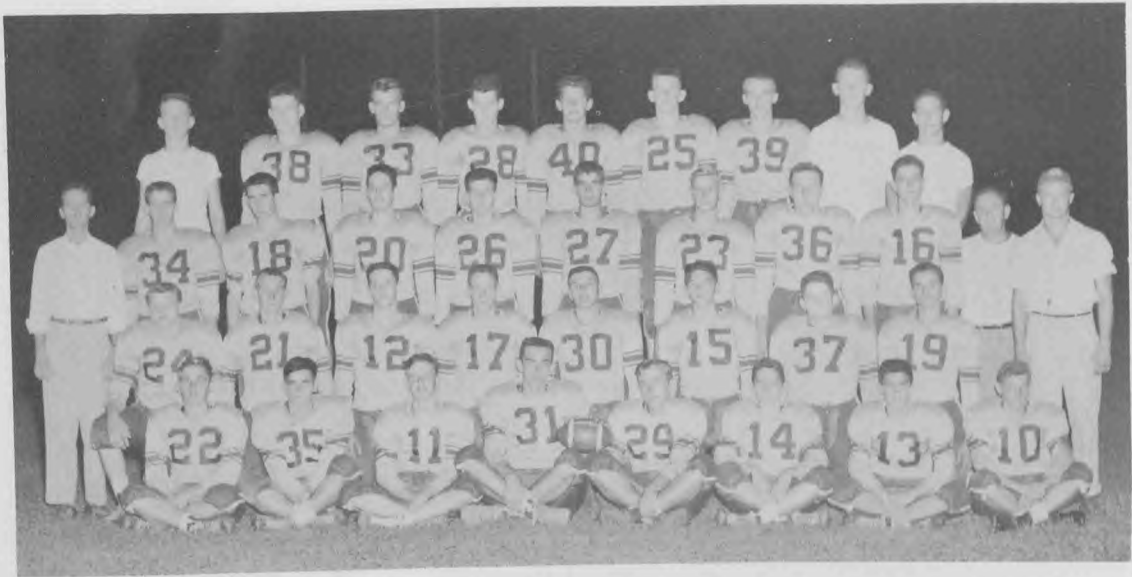
Intramurals





thletics





THE VARSITY SQUAD: First row: Diemler, Schrimpf, Hartman, Co-Captains Feind and Hentges, Brenneke, Amos, Scott. Second row: Schulz, Van Loo, Morris, Markway, Murphy, Schepker, Schulte, Prenger. Third row: Coach Warmbrodt, Leslie, Whitecotton, Brettschneider, Hall, Libbert, Kremer, Stokes, Hazelhorst, Brother Liguori, Athletic Director, Jim Rackers, Coach. Fourth row: S. Prenger, Manager, Butler, Strope, J. Butler, Boessen, Loehner, Vanderfeltz, Parris, and Pecher, Manager.

Football



Co-Captain Ray Hentges goes off end as Morris takes the Block.

Paul Feind talks over a line problem with Coaches Warmbrodt, Rackers, and Brother Liguori.





Ken Scott and Ed Butler match strength in this game of blocking.

Extra points that win games are often made on the practice field, so Jim believes.

Ray Hentges spots his man and heaves to the mark.

Practice Session

Teamwork and play are perfected in scrimmage under the watchful eyes of the coaching staff.





"A" Team

Left to right: Manager John Hall, Coach John Warmbrodt, Carl Schulz, Ray Hentges, Jim Kliethermes, Adrian Parris, Paul Feind, ~~Jim Markway~~, Bob Donehue, Athletic Director Brother Liguori, and Manager John Schwaller.

Basketball

Hentges drives in for another two pointer.



Schulz takes a pass as Feind runs into opposition.





"B" Team

Kneeling: Gene Fennewald, Jim Brenneke, Bill Deeken, Larry Gnagi, Dick Crader, Don Luebbert, Jerry McFadden, Standing: Coach Warmbrodt, Mike Dorge, Jim Veith, Paul Leslie, Joe Mahlan, Harry Hagner and Tom Amos.

Freshman Team



Kneeling: Bill Pohl, Jim DeLong, Bud Forck, Ralph Voss, Charles Luebbert, Standing: Brother Liguori, Joe Hemmel, Ronnie Prenger, Jim Nevins, Jim Reichart, and Gary Buehler.

Track Team

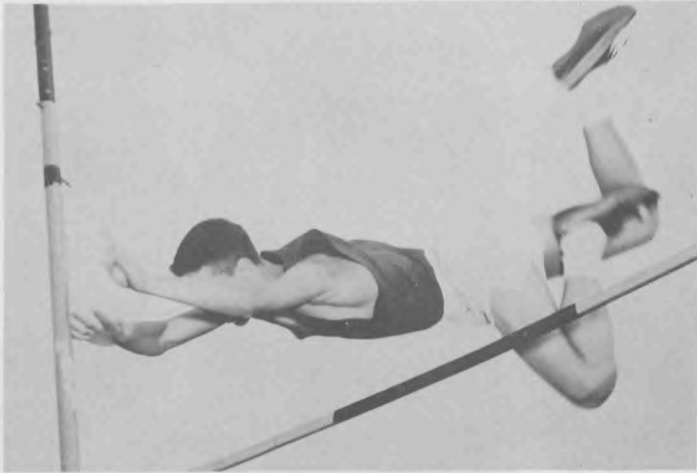


VARSITY TRACK TEAM - First row, left to right: B. Schrimpf, B. Kremer, J. Hentges, E. Butler, R. Hentges, J. Menges, D. Dulle, P. Leslie, P. Feind. Second row: T. Amos, J. Hall, Manager, L. Gnagi, J. Schwaller, Manager, B. Kauffman, R. Vanderfeltz, J. Reichart, M. Dorge, J. McFadden, R. Prenger, H. Hagner, J. Brenneke, J. Hemmel, Brother Liguori, L. Stokes, Coach Warmbrød. Third row: R. Crader, J. Butler, C. Schulte, D. Loehner, J. DeLong, B. Hentges, D. Schwaller, W. Butler, R. Schulte, R. Forck and T. Kremer.

Ed. Butler and Ray Hentges come out of the blocks as Brother Liguori watches.



Track



Joe Hemmel clears the bar with some to spare.



Not a new step in dancing but the end of a discus throw by Paul Feind.



It's a big step for Paul Leslie as he takes the low hurdles.



Ray Hentges follows through with ease.



Kicking high on the roll Bill Kremer clears a good high jump.



1956 CHEERLEADERS, left to right: Jeanette Noonan, Harriet Koester, Betty Hentges, Loretta Hertzling, Shirley Balkenbusch, and Jo Ann Temmen.

Saints Cheerleaders

Swinging into action, Loretta, Jeanette and Jo Ann lead the school song at the homecoming pep-rally.





Pepettes

OFFICERS:

Yvonne Forck, President; and Doris Dulle, Vice President. Seated: Mary Dulle, Mary Bob Couch, Joann Thrash and Mary Sue Dulle.

Besides their wonderful spirit at the games the Pepettes also have their card party and dance to round out the year of busy activity.





ctivities





Student Retreat



FATHER JAMES HOGAN M. S.
Girls' Retreat Master

FATHER HENRY J. FIGGE
Boys' Retreat Master





PRAYER!

Benildus Club



OFFICERS: Ray Hentges, Paul Feind, President; and Adrian Parris.



SACRIFICE!

ADVICE!
 the three Keys to success in life are the aims of the Blessed Benildus Vocation Club.





Good Counsel Club Officers: Louise Hemmel, Myrtle DeBrine, Betty Plogsted, President; Bonnie Starke and Yvonne Forck.

Good Counsel Vocation Club

Listening attentively to Sister Frieda's talk are the members of the Vocation Club.





Leading the Rosary are
Mary's Messenger Officers
Jeanette Noonan (Right),
and Judy Heisberger and
Judy Fausell (Left).

Mary's Messengers

Senior Members of the Mary's Messengers Club.





SOPRANO SECTION



Girls'
Choral Club



ALTO SECTION





High School



MR. LOUIS DESPRES
Band Director



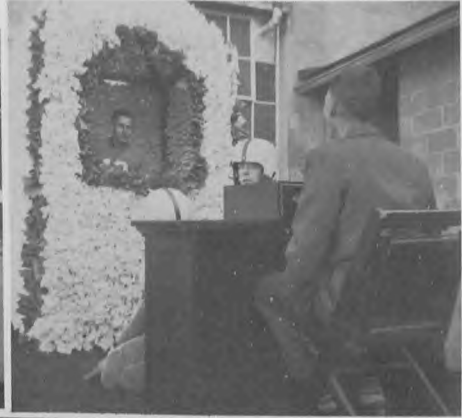


Band





Homecoming





HOMECOMING QUEEN Dorlene Vogel (center) poses with her ROYAL COURT. Left to right the Attendants are: Jeanette Noonan, Patricia Corrigan, Yvonne Forck, Marilyn Michels, and Ruth Strope.

Homecoming Queen and Court

Flanked by her Attendants and the Football Team Co-Captain Queen Dorlene makes her acceptance speech.





Art Editor, Betty Plogsted, looks in as Editor, Ann Blaser, checks with Assistant Editor, Carolyn Carver.

Rockette Staff

Covering School news is the job of the Staff for the ROCKETTE. At left are staff members Phyllis Buschman, Marilyn Whitecotton, Louise Hemmel, Carolyn Vetter, and Charlene Jameson.



Pat Owens, Arlene Lock, and Carol Rush check mimeographed copy as they get it ready to be assembled for distribution.





American Legion

FINALISTS IN THE AMERICAN LEGION ORATORICAL CONTEST: Doris Dulle, Jeanette Noonan, Charlene Jameson, Marilyn Whitecotton, Yvonne Forck, Carl Schulz, Louis Rephlo, and Mickey Smith.

Oratory

Optimists Contest



WINNERS:
 Joe
 Hemmel,
 (center)
 Tom Amos,
 (left)
 Iven
 Diemler
 (right).



CAST AND CREW OF THE SENIOR PLAY: THE REMARKABLE INCIDENT
AT CARSON CORNERS.

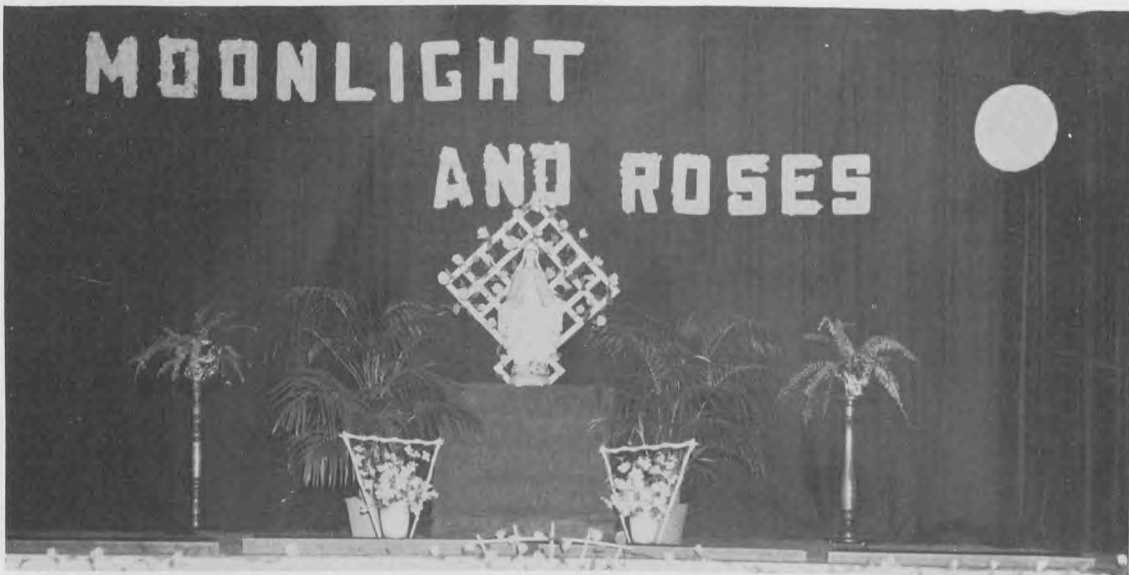


Senior Play

*Senior
Play*



MOONLIGHT AND ROSES



Junior-Senior Prom



In a setting of Moonlight and Roses the Juniors and Seniors enjoy the evening of dancing and fun in the garden of Mary.



National Honor Society



Girls' Division

Seated, left to right: Judy Graessle, Ann Blaser, Mary Dolores Veit, Marilyn Herbrandt. Standing: Carolyn Carver, Betty Plogsted, Ann Leah Lauf, Louise Hemmel, Doris Dulle, and Jeanette Noonan.



Boys' Division

Seated, left to right: Steve Prenger, Paul Feind, Edward Butler, Bill Kremer. Standing: John Morris, Mickey Smith, Thomas Whitecotton, Carl Schulz, and Louis Rephlo.

YVONNE FORCK
Tom Nacy Memorial
Award.



LOUISE HEMMEL
St. Mary's College
Scholarship, Music.



MARILYN WHITECOTTON
Webster College Scholar-
ship, English Award.

BETTY PLOGSTED
Lincoln University Scholar-
ship.



Honor Awards

Winning School Awards were: (insert) Jeanette Noonan, Social Studies; Ann Blaser, Exc. National Bank Award, Journalism; Dolores Veit, Religion Award; Doris Dulle, Gold Key Service-Loyalty Award; Marilyn Herbrandt, Commercial Award; Donna Knollmeyer, Citizenship, Science Award; and Eva Brandt, (insert) Physical Education Award. Missing was Mary Ann Kramer the winner of the C.M.T. Award.



School Honors



SPECIAL AWARDS: Louis Rephlo, Valedictorian; Paul Feind, Exc. National Bank Award; Mickey Smith, Scholarship Award; Carl Amend, C.M.T. Award; Ray Hentges, Scholarship-Athletic Award; Don Luebbering, Am. Legion Award; Bill Kremer, Service-Loyalty Award; Stanley Mengwasser, V.F.W. Award.

Four year perfect attendance Awards went to Jim Benton and Paul Libbert.



SCHOOL AWARDS

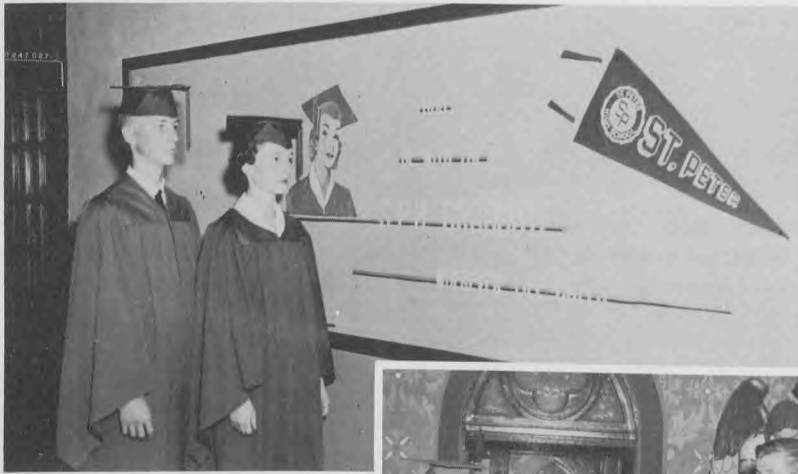
Louis Rephlo, Science.
 Edward Butler, All-Around Student.
 Kenneth Scott, Citizenship.
 Don Luebbering, Commerce.
 Clement Groner, Religion.
 (missing) Carl Schulz, Forensics
 and Athletics.





Senior

FAREWELL
TO
ST. PETER
HIGH
SCHOOL



The last graduate.

Graduation



Leaving the School for the last time the Senior Graduates pass the statue of the Most Blessed Mother to say a silent prayer of farewell.

