

1938

V
3-
B91



The MARCULLUS Of 1938



Jefferson City Senior High School
JEFFERSON CITY, MISSOURI

DONATED BY
CLIFFORD LOVE
OCTOBER 2003

GE
oct 03



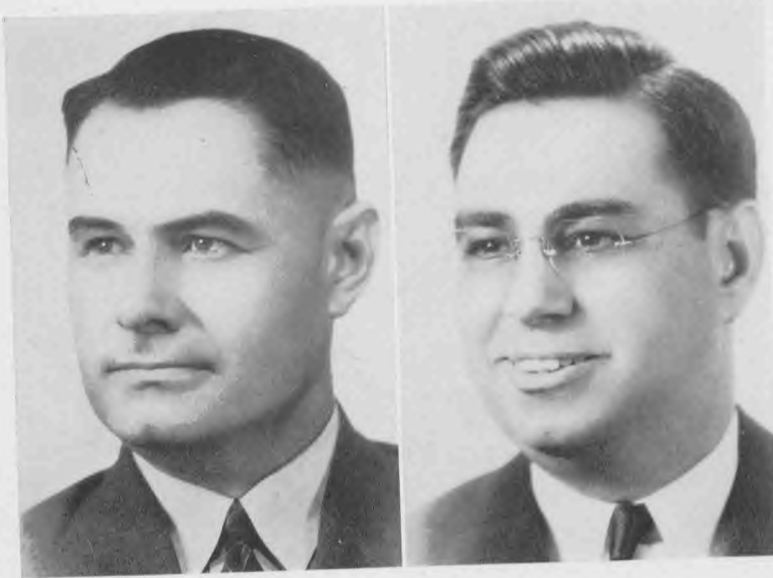
FOREWORD

Meaning—that one may apologize before one starts, but we are not apologizing because there is nothing for which to apologize. We are presenting you with a book of delightful pictures, interspersed with a few spicy words. Start now and enjoy every bit of picture and copy which the Marcellus staff had such good fun in preparing for you.

DEDICATED
TO

Miss Stella Heldman
TEACHER OF ENGLISH





R. T. SCOBEE

B. S., University of Missouri, '24
A. M., University of Missouri, '27
A. M., Columbia University, '31
Administration Diploma, Columbia
University, '32

J. C. DEATON

B. S., C. M. S. T. C., Warrensburg,
'29
A. M., University of Southern Cali-
fornia, '33
(City School Administration)

GREETINGS - -

School spirit is an intangible thing. We are often conscious either of its presence or of its absence without being able to discern it directly. At the Jefferson City Senior High School we recognize this spirit as a wholesome contribution to school life. I sincerely hope that this Marcellus will help you re-live, in the years to come, the delightful experiences of your days spent here.

R. T. SCOBEE

and

SALUTATIONS - -

Greetings, Class of 1938! As you approach the occasion of graduation from our school, you are called upon to place a direct appraisal or evaluation upon your career. The keynote for the past is achievement with its story of difficulties overcome, work completed, and merit won. The keynote for the present is constructive activity, for by thinking and doing life progresses. The keynote for the future is aspiration, by which the ideals and ever-changing challenges of tomorrow will lead you courageously onward to realize the noble things of life.

J. C. DEATON

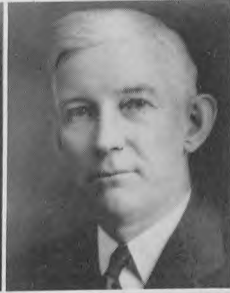
BOARD OF EDUCATION

MRS. W. C. IRWIN
President

MISS I. J. SLATE
Vice-President

MR. J. T. BLAIR, JR.
Member

MR. R. W. HEDRICK
Member



MR. D. W. PETERS
Member

MR. THORPE GORDON
Member

MR. EMIL SCHOTT
Treasurer

MISS C. LANGERHANS
Secretary

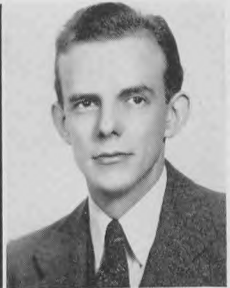
FACULTY

MR. SHAW
B. S.

MRS. O'BANION
B. S.

MISS ST. GEORGE
A. A.

MR. BENNETT
B. S.



MR. ADAMS
B. S.

MISS MAGILL
B. S., M. A.

MISS WILLIS
B. S.

MR. REAVES
B. S.

FACULTY

MR. UPDEGRAFT
B. S., M. A.

MISS JORDAN
A. B.

MISS DILLON
B. S., M. A.

MISS SLOAN
B. S.

MR. McMURRAY
B. S.



MR. BENISH
A. B., A. M.

MISS HELDMAN
A. B., B. S.

MISS CROCKETT
B. S.

MISS GILLESPIE
A. B.

MR. BROOKS
B. S., M. S.

MR. SANDERS
A. B., A. M.

MISS CAMDEN
B. S., M. A.

MISS WILEY
B. S.

MISS CREEK
Ph. B., M. S.

MR. GWINN
B. S.



MR. ULREY
B. S., M. A.

MISS DICKSON
A. B., A. M.

MISS RANK
B. S.

MISS ADAMS
A. B.

MR. CAMPBELL
B. S.

T. WILSON
President

MARY FRANCES GENTRY
Vice-President



BOB LILES
Secretary

COMER BATES
Treasurer



Sponsors
MRS. O'BANION
MR. BENISH

SENIOR CLASS HISTORY

The Class of '38 met as sophomores and elected its officers: Ernest Gantt, president; Katherine King, vice-president; Ruth Atkinson, secretary; T. Wilson, treasurer.

As juniors, the class officers were Bob Liles, president; Ernest Gantt, vice-president; Bob Latimer, secretary; and T. Wilson, treasurer. Miss Lutman and Mr. Benish were chosen sponsors.

Following custom, they feted the seniors at the annual Junior-Senior Banquet and Dance. With enthusiasm they produced, under the direction of Mrs. O'Banion, "Rosita", a three-act comedy-romance. The cast included Virginia Bailey, Comer Bates, Bob Liles, Bill Cargill, Leonard Gold, Jeryl Dean Yates, Warner Antweiler, Harriet Jackson, Mary Joe Smith, Paul Kleinhammer, and Mary Frances Gentry.

In April, Mr. Bennett produced Edward Grieg's "Norwegian Nights". The "prima donnas" from our class were Frances Carender and Mary Joe Smith. The "Carusos" were Leonard Gold, Guthrie Birkhead, and Omar Herbst.

The Junior-Senior Banquet, held May 7, was enlivened by the spirit of the band which had just returned from Lawrence, Kansas, where they had won the National Music Contest. Individually also, our school carried away the honors, winning six of the seven firsts. The winners from our class were Boone Shaw, Bruce Baker, and Ralph Walker.

This year, the seniors revived and sponsored the first Marcellus since 1933, nominated Katherine King, the winner for the D. A. R. representative, and produced "Smilin' Through" for the class play, under the direction of Mrs. O'Banion.



FRED ABEL
Origin—Jefferson City, Missouri

EVELYN AFFOLTER
Origin—Jefferson City, Missouri

PHILLIP ALBERTSON
Origin—Brumley, Missouri



JOHN AMBROSE
Origin—Russellville, Missouri

CHARLES WARNER ANTWEILER
Origin—Cedar City, Missouri

RUTH ATKINSON
Origin—Jefferson City, Missouri



VIRGINIA BETH BAILEY
Origin—Poplar Bluff, Missouri

J. F. BALKENHOL
Origin—Jefferson City, Missouri

BRUCE BAKER
Origin—St. Louis, Missouri



GLENN BARRETT
Origin—Jefferson City, Missouri

BENNETT BARTLEY
Origin—Fulton, Missouri

BOB BASSMAN
Origin—Jefferson City, Missouri



GEORGE COMER BATES
Origin—Lexington, Missouri

CLETUS E. BAURICHTER
Origin—New Bloomfield, Missouri

VIRGINIA LUCILLE BELSHE
Origin—Eldon, Missouri



MARGARET BENTON
Origin—Jefferson City, Missouri

MARJORIE BENZ
Origin—Jefferson City, Missouri

ROBERT W. BERNICK
Origin—Oskaloosa, Iowa



NEILL BERRY
Origin—Columbia, Missouri

GUTHRIE SWEENEY BIRKHEAD, II
Origin—Holden, Missouri

JUNIOR BLANK
Origin—Jefferson City, Missouri



JOE BOTZ
Origin—Sedalia, Missouri

PAUL BRADLEY
Origin—Springfield, Missouri

MELVIN BRANSON
Origin—Owensville, Missouri

BOB BURNS BRENTON
Origin—Owensville, Missouri

JAMES BROWN
Origin—Richmond, Missouri

LUCILLE BROWN
Origin—Kansas City, Missouri

JESSIE BUCKNER
Origin—Marshall, Iowa

ALLEN BURTON
Origin—Kansas City, Missouri

DON BUTLER
Origin—Montgomery City, Missouri

FRANCES ALZADA CARENDER
Origin—Jefferson City, Missouri

PRISCILLA CHAPPELL
Origin—Wainwright, Missouri

JOHN CHRISTIAN
Origin—New Bloomfield, Missouri

RUSSELL WALLACE CLARK
Origin—Jefferson City, Missouri

IRENE CLELLAND
Origin—Elberton, Georgia

DOROTHY CLINKENBEARD
Origin—Jefferson City, Missouri

VIRGINIA COFFELT
Origin—Jefferson City, Missouri

BONNIE JUNE COONCE
Origin—Ashland, Missouri

DEEDY COOPER
Origin—Chamois, Missouri

MARY ANN DALLAS
Origin—Jefferson City, Missouri

MARGARET DAWSON
Origin—Jefferson City, Missouri

BOB DEBO
Origin—Jefferson City, Missouri

HOPE DE SPAIN
Origin—Eminence, Missouri

MILDRED DIEHL
Origin—Wooldridge, Missouri

HARRIS MATTHEWS DOLAN
Origin—Illmo, Missouri

CHARLES EDMONDSON
Origin—Jefferson City, Missouri

SARA LOUISE ELLIOTT
Origin—Jefferson City, Missouri

PAULINE EMMONS
Origin—Guthrie, Missouri





MARGARET ANNE FARR
Origin—Jefferson City, Missouri

NADINE GENEVIEVE FARRIS
Origin—Eugene, Missouri

DOROTHY FERGUSON
Origin—Jefferson City, Missouri



MARJORIE LYNNE FORBES
Origin—Braymer, Missouri

JOSEPH FLICK
Origin—Jefferson City, Missouri

FRANK GAFFKE, JR.
Origin—Jefferson City, Missouri



ERNEST SNEED GANTT
Origin—Mexico, Missouri

JACK GAINES
Origin—Murphysboro, Illinois

MARY FRANCES GENTRY
Origin—Kansas City, Missouri



DOROTHEA GERBER
Origin—Jefferson City, Missouri

LEONARD GOLD
Origin—Jefferson City, Missouri

VERA DEE GORDON
Origin—Cedar City, Missouri



MARY BETH GRAVES
Origin—Newtonia, Missouri

EDWARD GROSS
Origin—Jefferson City, Missouri

RAYMOND HALDIMAN
Origin—California, Missouri



C. O. HANES, JR.
Origin—Steubenville, Ohio

ANNA JEAN HARTMAN
Origin—Marshfield, Missouri

EDWIN HAWKINS
Origin—Clinton, Missouri



JOHN HAYES
Origin—Keytesville, Missouri

ROBERT H. HEIDBREDER
Origin—Jefferson City, Missouri

LORRAINE MARTHA HENRY
Origin—Chicago, Illinois



OMAR HERBST
Origin—Kirkwood, Missouri

TED HERRON
Origin—Joplin, Missouri

GWENDOLYN MARIE HICKS
Origin—Jefferson City, Missouri

PAULINE ELEANOR HOEHLER
Origin—Jefferson City, Missouri

ROBERT HOLLIWAY, JR.
Origin—Jefferson City, Missouri

FRANCES HOOVER
Origin—Jefferson City, Missouri



BILLY DON HORD
Origin—Tebbetts, Missouri

MARGARIETE ESTELL HUDSON
Origin—Jefferson City, Missouri

HAROLD HULL, JR.
Origin—Marshall, Missouri



BETTY ANN HULSE
Origin—Hannibal, Missouri

CLAY EWING HUNTER
Origin—Richmond, Virginia

ROBERT NELSON HUNTER
Origin—St. Louis, Missouri



RUTH ANNE HURT
Origin—Houstonia, Missouri

HARRIET JACKSON
Origin—Perry, Missouri

RALPH JOBE, JR.
Origin—Jefferson City, Missouri



DOROTHY JOHNSON
Origin—Mexico, Missouri

NANCY LEE JONES
Origin—Milan, Missouri

DANIEL KALLENBACH
Origin—Jefferson City, Missouri



MURIEL KASSEBAUM
Origin—St. Louis, Missouri

BILLY BAKER KENNEY
Origin—Jefferson City, Missouri

KATHERINE KING
Origin—Shelbina, Missouri



PAUL K. KLEINHAMMER
Origin—Morenci, Arizona

FRANCIS WARD KNIEST
Origin—St. Louis, Missouri

MARATHA KNOTT
Origin—Verona, Missouri





MERCEDES LACKEY
Origin—Jefferson City, Missouri

BOB LATIMER
Origin—Santa Ana, California

MARJORIE LAUF
Origin—Columbia, Missouri








DORRIS LEONARD
Origin—Holls Summit, Missouri

BOB LILES
Origin—Webb City, Missouri




ROBERT LINDLEY
Origin—Jefferson City, Missouri



LEROY LINHARDT
Origin—Jefferson City, Missouri

RUBY MAY LOEFFLER
Origin—Jefferson City, Missouri




CHARLES LUECKENHOFF
Origin—Jefferson City, Missouri



VIRGINIA McCULLOCH
Origin—Jefferson City, Missouri

ALLENE MCDANIEL
Origin—Jefferson City, Missouri




ALFRED MCKEEL
Origin—Guthrie Center, Iowa



LEONARD WILLIS MCKINNEY
Origin—Jefferson City, Missouri

EDNA MCNEW
Origin—Fullton, Missouri




LOIS MALONE
Origin—Meridian, Mississippi



RAYMOND PRESTON MARSH
Origin—St. Louis, Missouri

MARION LOUISE MAYES
Origin—Cambridge, Massachusetts




KENNETH CLAUDE MEREDITH
Origin—Concordia, Missouri



AUDREY MILLER
Origin—Jefferson City, Missouri

MITCHELL MILLSAP
Origin—Mt. Vernon, Missouri




NANCY ANN MOELLER
Origin—Jefferson City, Missouri



O. W. MUCK
Origin—Jefferson City, Missouri

THOMAS MUELLER
Origin—Osage City, Missouri

ANNA MARIE NEUTZLER
Origin—Jefferson City, Missouri



BOB NUTTER
Origin—Richmond, Missouri

PEGGY OBERMAN
Origin—Kansas City, Missouri

RUBY J. PAYNE
Origin—Treece, Kansas

MAXINE PARMELEE
Origin—Centralia, Illinois

JOHN EDWIN PARRISH
Origin—Jefferson City, Missouri

BOB PHILLIPS
Origin—Fayette, Missouri

GLADYS PRATER
Origin—St. Louis, Missouri

ROBERT PRATT
Origin—Jefferson City, Missouri

BETTY BRADBURY RAMSEY
Origin—Jefferson City, Missouri

CLIFFORD RICKER
Origin—Meta, Missouri

LEAH MAY RAMSEY
Origin—Leadwood, Missouri

BETTY LOU ROACH
Origin—Faucett, Missouri

LESTER ROSS
Origin—Mitchell, South Dakota

ROWENA MARY ROSS
Origin—Jefferson City, Missouri

JOHN CORNELIUS RUDDER
Origin—Sedalia, Missouri

ROBERT RUTLEDGE
Origin—Jefferson City, Missouri

MOSSIE MARIE SANDERS
Origin—Mokane, Missouri

NELDA B. L. SAUERHAGE
Origin—Lohman, Missouri

SHIRLEY JANE SAVERS
Origin—Lafayette, Indiana

RALPH SCHAEFER
Origin—Jefferson City, Missouri

DOROTHY SCHEPERLE
Origin—Jefferson City, Missouri

BILLY EDWARD SCHMIDT
Origin—Jefferson City, Missouri

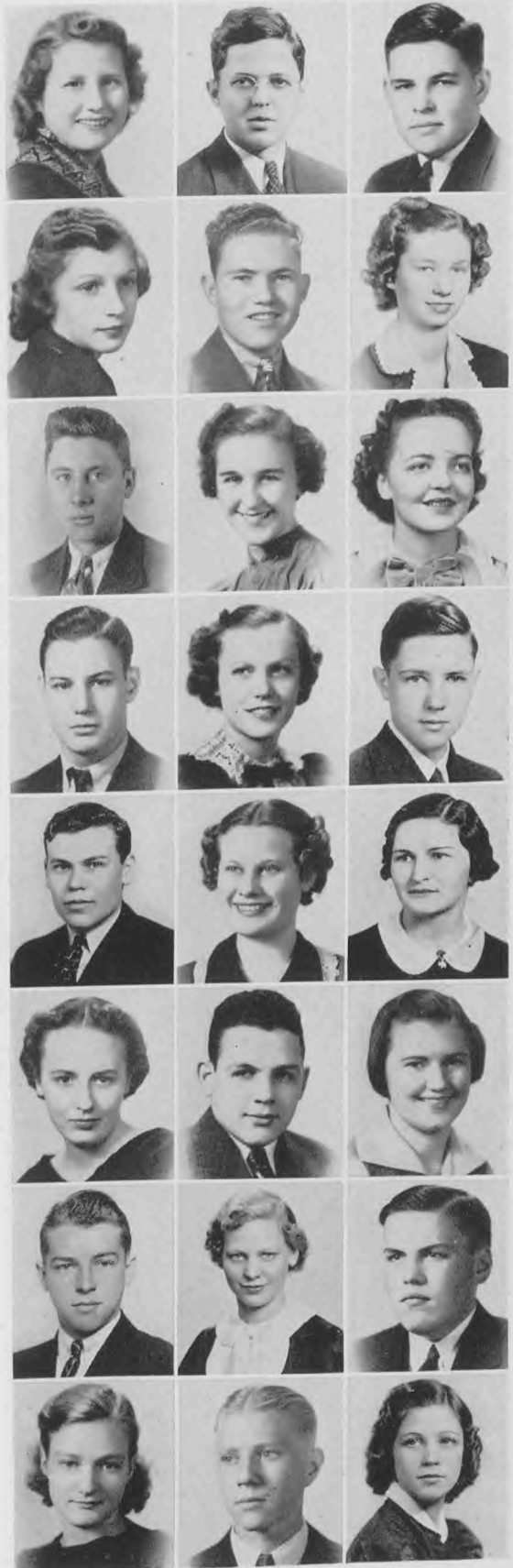
NOLA JANE SCHNEIDER
Origin—Jefferson City, Missouri

JAMES HERBERT SCHNELL
Origin—Jefferson City, Missouri

ODASTA SEIDEL
Origin—Jefferson City, Missouri

ROBERT SEMLER
Origin—Lexington, Missouri

MARCELLA SHAMEL
Origin—St. Louis, Missouri





ROBERT MILLARD SHOCKLEY
Origin—Joplin, Missouri

BILLY SLANKER
Origin—Jefferson City, Missouri

MARY JOE SMITH
Origin—Richmond, Missouri



JACK STANFORD
Origin—Jefferson City, Missouri

ROBERT STIGALL
Origin—St. Joseph, Missouri

FLO STOCK
Origin—Hadsell, Missouri



RAYMOND STOCK
Origin—Wooldridge, Missouri

FLOYD SUNDERMEYER
Origin—Holls Summit, Missouri

FREDA MAE TENNYSON
Origin—Jefferson City, Missouri



HOWARD WILLSON THOMPSON
Origin—Osage City, Missouri

MILDRED HELEN THOMPSON
Origin—Osage City, Missouri

QUENTIN THOMPSON
Origin—Jefferson City, Missouri



HELEN TOEBBEN
Origin—Jefferson City, Missouri

EARL E. TRIPPENSEE
Origin—Jefferson City, Missouri

JOHN VOGT
Origin—Jefferson City, Missouri



RALPH VIETH
Origin—Jefferson City, Missouri

RALPH WALKER
Origin—St. Aubert, Missouri

ROY WEBER
Origin—Russellville, Missouri



JACK WEGMAN
Origin—Jefferson City, Missouri

ROSALIE WERNER
Origin—New York, New York

HAROLD WHEATLY
Origin—Jefferson City, Missouri



OLLIE WHEELER
Origin—Jefferson City, Missouri

RUSSELL WHITE
Origin—New Bloomfield, Missouri

LAVENIA WILLIAMS
Origin—Kansas City, Missouri

RICHARD WILLIAMS
Origin—Jefferson City, Missouri

JOHN ROBERT WILLS
Origin—Sedalia, Missouri

T. WILSON
Origin—Sikeston, Missouri

LAVERNE WINTERMEYER
Origin—Hartsburg, Missouri

MILDRED WOLFF
Origin—Jefferson City, Missouri

CLYDE WREN
Origin—Steadman, Missouri

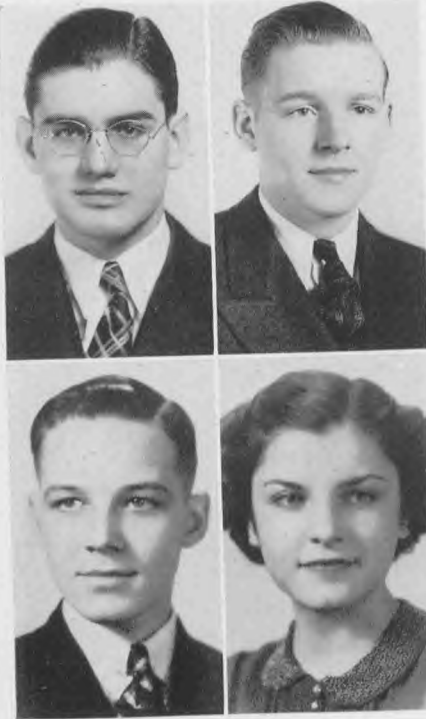
JOHN WUNDERLICH
Origin—Jefferson City, Missouri

JERYL DEAN YATES
Origin—Smithville, Missouri

CHARLES ZIMMERMAN
Origin—Jefferson City, Missouri



LOUIS AHRENS
JOE CALLAWAY
JAMES COLVIN
DENVER FERGUSON
GENE LANGUELL
LOUISE NELSON
ALVINA PAPIN
BOONE SHAW



REX MCKITTRICK
President

BILL OAKERSON
Vice-President

WAYNE MUELLER
Secretary

NAOMI SHOCKLEY
Treasurer

Sponsors
MISS SLOAN
MR. BENNETT

JUNIOR CLASS HISTORY

Having every prospect of three fruitful years, the present junior class met as sophomores electing Berryman (Budge) Henwood, president; Rex McKittrick, vice-president; Maring (Ming) Lohman, secretary; and Wayne Mueller, treasurer. The sponsors elected for the year were Miss Sloan and Mr. Bennett.

Beginning '37 they elected Rex McKittrick president, Bill Oakerson vice-president, Wayne Mueller secretary, and Naomi Shockley treasurer. Having proved such interested and helpful sponsors, Miss Sloan and Mr. Bennett again were elected sponsors.

The class soon showed its prowess athletically. Mr. Updegraff's home room 102 won the boys' intramural baseball championship, astonishing the seniors with their superior skill (a tip, please).

Miss Magill, the play director, chose for the cast of "Speed" ten want-to-be stars. Betty Baker, Mary Ann Radke, Elizabeth Linker, Frances Clark, Elizabeth Hunter, Charles Cohen, Troy McCubbin, Hardy Glenn, and Rex McKittrick were those selected.

The class demonstrated its mettle and forecast its senior year when it subscribed sixty per cent strong for the Marcellus and over fifty per cent for the activity tickets.

Hail, the 1939 seniors!



HOME ROOM 102

Bottom row: LUCILLE POHLMAN, MARGARET FISCHER, MARION ROBERTSON, BETTY LINKER, MISS MAGILL, GENEVA EDWARDS, JEAN TELLMAN, GEORGIA WEEKS, AURELIA FRICKE

Middle row: VIVIAN BROWN, MARION ADKINSON, NOLA COONCE, ANITA COONCE, JANE ROBINSON, EVELYN MEYER, FRANCES ADAMS

Top row: JOHN FARR, WILSON MACE, GENE MITCHELL, REX MCKITTRICK, HARDY GLENN, ROBERT MANSUR, CHARLES COHEN

HOME ROOM 103

Bottom row: PEGGY RUTLEDGE, MILDRED LA'GREE, MARGIE KING, FRANCES NICHOLS, GLADYS BROWN, MARJORIE BURKEL, FRANCES CLARK, SARA GAITHER

Middle row: MISS SLOAN, NAOMI GORDON, ALICE REITER, DOROTHY MCGEE, RUTH SCHNEIDER, EVELYN SUNDERMEYER, MARIE VAUGHN

Top row: JAMES CLAYBROOK, ALDEN ANGERER, EDWARD JONES, NORMAN MUCK, BILL HOUCHIN, JIM SCOTT, G. B. JOHN



HOME ROOM 315

Bottom row: LEONA STEVENSON, MARY ANN RADKE, MARGARET JANE MAGRUDER, AUDREY PERRIGUEY, MAURITA EGGLESON, MARY JANE BALKENBUSCH, ELEANOR VOLKMAR, MAURINE WEILER

Middle row: EDGAR SCHULTE, MARING LOHMAN, MURIEL LAMBETH, MR. BENNETT, EVELYN ROSS, RAYMOND VOLKMAR, GALE DIXON

Top row: CLARENCE NEAL, ELMER BLOCKBERGER, DINO BRUGIONI, RUSSELL GUERDON, BILL FROMME, VEST RICE, DUKE GOODALL

HOME ROOM 206

Bottom row: DORENE ROBBINS, EVELYN SCHWAB, DOROTHY FLEMING, LULU ANN CHAPPELL, CLARICE ALLISON, HELEN BAHR, IRENE JONES, MARIE ENLOE

Middle row: JEAN WRIGHT, JEAN MALLETT, VERNIETA REICHMANN, SHIRLEY BOHNER, ADA RUTH SMITH, NAOMI SHOCKLEY

Top row: RICHARD MCKINNEY, KENNETH BEGEMAN, CARL SOMMERER, BILL OAKERSON



HOME ROOM 304

Bottom row: VERNE WOODS, BETTY JO SMITH, FLORENCE WILSON, JEANETTE HEISLER, ADA JANE PATRICK, GRACE GANTT, VETA MAE GRISSO, CHARLOTTE WITHINGTON

Middle row: LEON SAPP, HELEN COFFELT, SHIRLEY SMITH, ELLEN ANN MARKLE, MISS ADAMS, PATTY DAWSON, SARA LOUISE SNORGRASS, LOUISE YERRY, BOB GRANT

Top row: MERLIN BURKE, ALVIN MAUER, LEWIS BASSMAN, DONALD SANDERS, JIM DYCK, DONALD AXON, JAMES MARTIN

HOME ROOM 106

Bottom row: MURIEL BURKE, HELEN PARSONS, NANCY CHAPMAN, MARY GRACE MOSCHEL, CARMEN CHAMBERS, JEAN DOGGETT, DOROTHY GLOVER, MARY WILSON, ANNABELLE WITHINGTON

Middle row: ROY MCGHEE, WILLIAM HIRSCHMAN, PATTY CHARLTON, HELEN MAE LUETKEWITTE, MISS GILLESPIE, ELIZABETH HUNTER, DOROTHY KIESELBACH, MARIE SPENCER, MAURICE HALL

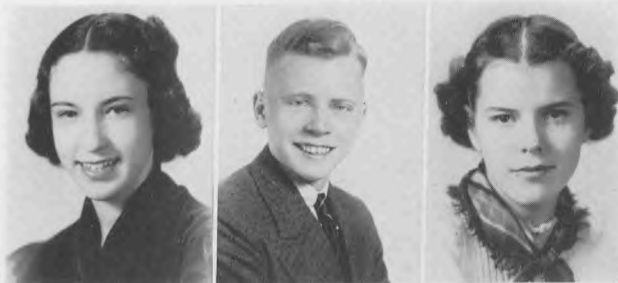
Top row: JIM HALEY, TROY MCCUBBIN, ROBERT MAJOR, HAROLD SURBOUGH, LAWRENCE WEHMEYER, BILL LISTER, JIM STRONG, WINSTON MEREDITH, RICHARD CLARK



HOME ROOM 311

Bottom row: FLORENCE ARMSTRONG, MARGARET KIRCHOFF, LOUISE KASE, VERNELLE NICHOLS, DOROTHY SMITH,
RUTH KATHRYN BURKEL, BETTY BAKER, DELORES GREEN, WANDA CONNELL

Top row: KATHRYN SUE ARNHOLD, DOROTHY HARPOLD, MERRITT GWINN, CLIFFORD MOSLEY, MISS DICKSON,
HOLLIS HANKS, LEE ROY ROGERS, WILMA CARRENDER, THELMA LEE HARMON



BETTY STUCKEY
President

TOM AXON
Vice-President

MARY BASSMAN
Secretary-Treasurer

Sponsors

MISS CAMDEN
MR. SANDERS

SOPHOMORE CLASS HISTORY

On turning to this class for the purpose of dissection and analysis to ascertain their relative merits and evaluate their accomplishments, we realized that a history to be accurate and worth-while must be the product of time; and that they had not had many months of growth together; and therefore, should not be dealt with too critically.

The class made a commendable start by electing Betty Stuckey as their president, Tom Axon as their vice-president, and Mary Frances Bassman as their secretary-treasurer. Miss Camden and Mr. Sanders were the two sponsors chosen.

One indicative fact which was noted was the response to the activity tickets and Marcellus drive. They supported the activity tickets almost fifty per cent and the latter forty per cent, showing readily their well-developed school spirit.

The staff wishes to extend a hearty hand to the sophomores and hopes that good luck will be theirs.



HOME ROOM 309

Bottom row: LILLIAN SHOUSE, MARIE FEINSTEIN, IRIS HARRIS, NELDA STEWARD, RUTH SHACKLEFORD, BONNIE CRISMON, DOROTHY STRAUB, BETTY STUCKEY, MARY JEAN SCOBEE, LA RUTH HEIDT

Middle row: ROY SHICKLES, HELEN BOECKMAN, JESSIE MAY JONES, JEWEL RIPPITO, MR. GWINN, ELIZABETH STONE, BETTY LEE VAN HORNE, JESSLYN ALLEN, ROY LEGG

Top row: EDWARD HAMPTON, ROBERT ADAMS, OTTO NIEMAN, EUGENE LAKE, HAROLD REED, RUSSELL KENNISON, JACK PAYNE

HOME ROOM 201

Bottom row: PAULINE MARTIN, DOROTHY KELPE, ANTONIO HOEHLER, MARGARET NICHOLS, RUBY AMBROSE, DOROTHY HEIDBREDER, VELMA BOND, MARTHA WAITE, ELDA LICHT, MILDRED WADDILL

Middle row: ELSIE KRIEGER, RUTH MUELLER, THELMA THOMPSON, EVA MULLINS, MILDRED STONE, MINERVA KENTON, DORIS BARTON, MISS CAMDEN

Top row: JACK BLANK, ALVIN ALEXANDER, EDWARD DYBALL, TOMMY HULL, RAYMOND WILLIS, PAUL WALLACE, CLIFFORD MAHON, CLIFFORD MANTLE, CLAUD SNELLEN



HOME ROOM 204

Bottom row: MARY ISABELLE MEREDITH, RUBY MICHAEL, JOSEPHINE THRUSTON, MARY JANE HAYES, MARY E. HAHN, ALEENE LYNES, FRANCES FARRIS, VIOLET MAY EDWARDS, FLORENCE MAXEY

Middle row: ERNEST TIETJEN, LEROY SMITH, PAUL GIBLER, MAYBELLE HOSKINS, MR. McMURRY, MARDELL WYRICK, KATHRYN HOSMER, BOYD GRIFFITH, LESLIE ROSS

Top row: HAROLD PAYNE, JOE GRAY, ANCIL RIPPETO, JIM BENNETT, EARL BOHNER, HOWARD GRIFFIN, LEE WHITE, G. W. LARKIN, CHESTER MCKINNEY

HOME ROOM 210

Bottom row: ORVILLE SHOCKLEY, WALTER BENKE, PAUL ITTNER, MILDRED BABBITT, IRENE WOLF, VIRGINIA NICHOLS, DORIS STADLER, GENEVA MORROW, RUTH FEINSTEIN

Middle row: KENNETH LAGREE, CORTEZ, KNORRE, DOROTHY PIRNER, WANDA TAGGERT, OLIVE PERRY, CARLI AMOS, ADELLE MAGER, VIVIAN BRIGGS, BETTE LOU CAMPBELL, VIRGINIA KENNEDY, MISS RANK

Top row: EWING KENNEY, LAVERNE WILSON, BILL TIPTON, TOM BURKE, RUPERT LINSENBARDT, OSCAR WALTHER, SAM COOK, RUSSELL ADAMS



HOME ROOM 101

Bottom row: MARJORIE OPEL, DELLA MARIE ALLEN, CAROLYN PLATT, MARY FRANCES BASSMAN, MARIE BAILEY, BECKY MEANS, VIRGINIA ALLEN, JUNE HORN
Middle row: BERTRAM THOMPSON, FRANCES JAMES, JEANETTE HUEGEL, MR. SANDERS, BETTY GOSHORN, VICTORIA BURNETT, BILLY SCHNELL
Top row: JAMES MADDOX, JOHN NOTICE, JAMES MOIR, JOHN STOCK, VERNON HEISINGER, TED SCHULTZ, JOHN DAMHORST, ART ZEITZ

HOME ROOM 101

Bottom row: OLIVE BURR, FRANCES BEDSWORTH, GENEVIEVE MOKE, MAXINE BLANTON, HELEN BOUR, MARGARET AFFOLTER, JANE RICE, LORRAINE WALKER, LAURA BETH CRANE
Middle row: BEN BERRY, DOROTHY ENGLEHARDT, ELEANOR BOTZ, MILDRED RYDER, NELLIE GILPIN, VIRGINIA MASON, LUCILLE LOETHEN, HOWARD PRUITT
Top row: BRICE HALDIMAN, JIMMY SMITH, POWELL ADAMS, JOHN CLINKENBEARD, ROBERT WOODS, EUGENE THOMPSON, PAUL WOODLAND, ROBERT MAXWELL



HOME ROOM 205

Bottom row: DELORES MAXWELL, VIRGINIA MICHAEL, MARJORIE RUSSELL, ELISABETH GREEN, THELMA CLEVINGER, MISS HELDMAN, BARBARA BROWN, DOROTHY BROWN, JEAN PEEPER, GLADYS NEAL, ELIZABETH BOTZ

Middle row: JIMMIE LAND, JACK KNIEST, TOM CHAMBERS, DOROTHY HUDDLESTON, ALEDA WILFERTH, GENEVIEVE SUNDERMEYER, LOUISE COOK, RUTH GENSKY, IRMA SCHAEFER, WARREN KLICK, STANLEY HOWARD, JACK HOWSER

Top row: THOMAS GRAHAM, TOM AXON, JIMMY PARSONS, CHARLES ODAM, ROBERT DUNWIDDIE, RICHARD WEBER, FELIX SOMMERER, EDGAR RAILTON, EWING RUSSELL

HONORS AWARDED GRADUATES SINCE 1933

A. A. U. W. SCHOLARSHIP

- '35 LILLIAN MAGER
- '36 MYRENE VOGT
- '37 FAY FINNEY

COLE COUNTY MEDICAL SOCIETY PLAQUE

- '33 IRA H. LOHMAN
- '34 PAULINE MILLER
- '35 ANNE LOUISE AXON
- '36 MELVIN MILLER
- '37 ROBERT LINVILLE

COMMERCIAL AWARD

- '33 RUTH JANE COLLETT
- '34 IRENE LINHARDT
- '35 BERNICE ROBERTSON
- '36 PHYLLIS ROBERTSON
- '37 VIRGINIA HEIDT

D. A. R. GOOD CITIZENSHIP

- '37 JEAN DUENSING

D. A. R. HISTORY PLAQUE

- '33 ELEANOR KALENBACH
- '34 EDWARD PARMALEE
- '35 ANDREW BARTLEY
- '36 JACK LARTONOX
- '37 LEWIS EUGENE MILLER

DELPHIAN SOCIETY PLAQUE

- '33 WARREN WYRICK
- '34 DONALD SHULL
- '35 HAROLD VOLKMAR
- '36 LYLE BEAGLE
- '37 KATHERINE KING

EXCHANGE NATIONAL BANK ATHLETIC TROPHY

- '33 THELBERT NEWTON
- '34 MORROW MASON
- '35 ANDREW BARTLEY
- '36 GENE STEPHENS
- '37 MERWIN HELMERICH

HOUGH MEDAL

- '33 ANNE LOUISE AXON
- '34 IRENE LINHARDT
- '35 NORMA BARKS
- '36 MILDRED WOLFF
- '37 PRISCILLA CHAPPELL

KIWANIS MANUAL TRAINING PLAQUE

- '33 PRICE VAUGHAN
- '34 CHARLES KIESELBACH
- '35 DAVID NEWSOM
- '36 VERLIN MILLER
- '37 CLYDE WREN

NATIONAL HONOR SOCIETY PIN

- '33 MAURICE PAYNE
- '34 MARY SLANKER
- '35 BILL MAHAFFY
- '36 LEONARA MAE BOND
- '37 MILDRED GAY

THE CAPITAL CITY WATER COMPANY MUSIC PLAQUE

- '34 ORIN SHOCKLEY
- VERNON DEBO
- JESSIE TUDOR
- '35 JESSIE TUDOR
- HAROLD VOLKMAR
- '36 IMOGENE MAYENS
- BONNIE JEAN HERRON
- DWIGHT STEWARD
- LEONARD GOLD
- '37 RUTH WINTERMEYER
- OMAR HERBST
- MARY HAY

TWO-DEBATE MEDALS

- '34 VIRGINIA FORSYTHE
- WALTER HELMERICH
- '35 JACK HANES
- PHILLIP GOTTSCHALK
- '36 KATHERINE KING
- PHILLIP GOTTSCHALK
- '37 KATHERINE KING
- PHILLIP GOTTSCHALK



VICTOR REAVES
Coach

JOHN ADAMS
Assistant Coach

ATHLETICS

Football and basketball are the two major sports in which the senior high school participates. Football is probably the more important of the two sports.

SLATER

The Jays opened the season against Slater. We scored early in the game, but missed the try for extra point. Slater scored on a Jay fumble late in the last quarter and won 7-6.

MARSHALL

In our next game, against Marshall, the Jays were unable to stop the Hightown Owl star and as a result were defeated 37-7.

LEBANON

The Jays rebounded from their defeat by Marshall and beat Lebanon 26-0. Our running and passing attack "clicked", and the team gained consistently. This was our first victory of the season.

BRANSON

BARRETT

SHOCKLEY

GAINES

B. D. HORD

J. W. HORD



SOMMERER

REED

MUCK

STEWART

ZIMMERMAN

LINDLEY

SEDALIA

In our next game, with the Sedalia Tigers, the Jays showed their best offense of the year. The game was played on a muddy field, and the Tigers were beaten 20-0.

M. M. A.

The team journeyed to Mexico for their next encounter, where they met the M. M. A. Colonels. The Jays outplayed their opponents, but were able to score only once as did M. M. A. The game ended in a 7-7 tie.

FULTON

After being out-downed 17 first downs to 3 and being out-scrimmaged 371 yards to 58 yards by the Jays, Fulton won 6-0.

ALLEN

GAFFKE

BURTON

GWINN

SURBAUGH

ADAMS



SCOTT

STIGALL

OWENS

BIRKHEAD

OAKERSON

SAPP

BARTLEY

COLUMBIA

The Jays gained a lead in the first quarter by a pass from Barrett to Lindley; but Walden, elusive Kewpie back, broke loose three times for touchdowns, and the Jays lost 19-7.

HANNIBAL

The Jays lost to a strong Hannibal squad by the score of 19-0. The game was climaxed by a spectacular run by Fohey, Pirate man, who picked up a Jay punt on his one-yard line and ran 99 yards for a touchdown.

KIRKSVILLE

The last game of the season was one of the best of the year. The Jays were at their peak defensively, and they held the undefeated Kirksville team to an unexpected 0-0 tie.

BASKETBALL

The Jay basketball team completed a very difficult schedule with a record of eight victories and twelve defeats.

Taking the season as a whole, the team played good basketball, most of their losses being by a small number of points. The Jays were handicapped by lack of height, but they made up for this by their spirit. One of the best instances of the old Jay "fight" was our home game with Rolla High School. The two teams were evenly matched, and neither showed a decisive edge in the playing up to the last quarter, when Rolla pulled slightly ahead. The visitors had a three-point lead with about one minute left to play, and it looked as though they had the game "in the bag." However, the Jays scored two quick baskets, the last one dropping in just before the horn sounded, ending the game, and we won 29-28.

After the completion of the regular schedule, the team competed in the Eldon and the Regional tournaments.

In the Eldon tournament, the Jays advanced to the quarter-finals by defeating California's "B" team 32-19. However, they were eliminated in their next game by virtue of a 26-27 defeat at the hands of Brumley.

The Regional tournament was held at J. C. H. S. this year. It is played to determine which team from our district shall compete in the state tournament. The winning team from our district this year was the Eldon Mustangs.

The Jays beat Centertown 23-12 in their first game but were beaten by the Mustangs in the quarter-finals. The final score was 26-21. Incidentally, the Jays put up the best fight of any team which played Eldon in the tournament.

MILLSAP

BARRETT

BRANSON

MITCHELL



REED

McKINNEY

SURBAUGH

MAJOR

ADAMS

An innovation at J. C. H. S. this year was the adoption of a "B" team in basketball. The squad was composed mostly of sophomores who have not had quite enough experience to play on the varsity; they can gain this valuable asset only through competition with other teams. These players were placed on the "B" squad under Coach Adams, who scheduled games with Sedalia, California, Fulton, and Russellville. The team won five and lost two of their seven-game schedule.

High scorer for the basketball squad for this season was Mitchell Millsap, a senior.

BASKETBALL SCORES

<i>Jays</i>	<i>Team</i>	<i>Opponents</i>
9	Eldon	11
17	Eldon	19
19	Columbia	21
25	Columbia	30
27	Sedalia	30
24	Sedalia	28
29	Rolla	28
25	Rolla	27
24	St. James	21
29	St. James	31
33	Boonville	15
30	Boonville	23
29	Fulton	16
21	Fulton	14
19	California	27
32	California	35

ELDON TOURNAMENT

32	California "B"	19
26	Brumley	27

REGIONAL TOURNAMENT

23	Centertown	12
21	Eldon	26

WILSON

SLOAN

HALEY

BUTLER

BROWN



HEISINGER

LAKE

DUNWIDDIE

LATIMER

MCGHEE

GWINN

SWIMMING

Another important part of our athletics is the Jay Swimming Team. This year the Jay tank stars competed in seven meets. Out of these seven meets we won two, lost four, and placed eighth in the St. Louis state meet. The team was crippled considerably by the injuries of several of the regular men at different times throughout the season.

SCHEDULE

	<i>Opponents</i>	<i>Jays</i>
Western Military Academy.....	42	24
Western Military Academy.....	35	22
Principia.....	32	34
Wyandotte.....	40	26
Principia.....	30	36
Wyandotte.....	43	23

State meet—eighth place



BURRE, MULLINS, CRANE, NICHOLS (*Captain*), SMITH, ALLEN

GIRLS' BASKETBALL

Basketball is the most outstanding girls' sport. A tournament was played, in which the senior, junior, and sophomore classes participated. Virginia Nichols' sophomore team was victorious, defeating Dorothy Schepeler's senior team for first place. Frances James' team won third.

GIRLS' VOLLEYBALL

The seniors received first place in the volleyball tournament, Jeryl Dean Yates' team being the victor. Marion Robertson's team placed second, and Mary Ann Radke's team captured the third position. Under the tutelage of Miss Clara Willis, other tournaments were played. Ping pong, aerial dart, and baseball are some of the other games in which the girls' gym classes take an active part.

SAVERS, THOMPSON, GENTRY, HENRY, EMMONS, YATES (*Captain*)





HOME ROOM 206

Back row: RICHARD MCKINNEY, KENNETH BEGEMAN, DONALD SMITH, JAMES VACHE
Front row: VICTOR HOWSER, RICHARD PHELPS, VERNON HOWSER

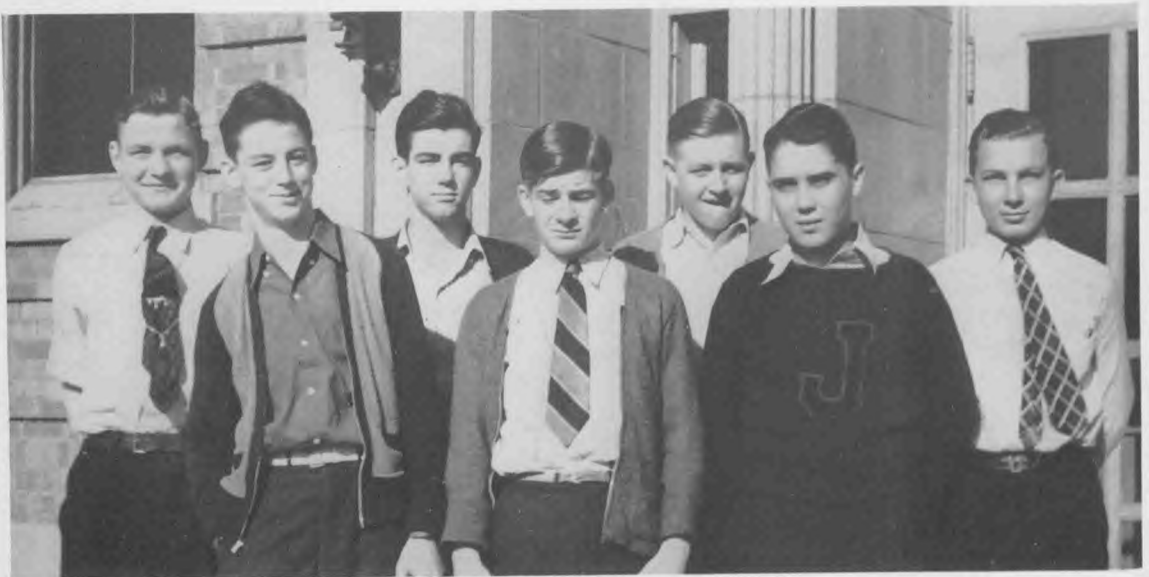
BOYS' INTRAMURAL SPORTS

Intramural games are played among the various home rooms of the school, and only those boys who do not compete on a school team are eligible. A banner is given to the winning team both in baseball and basketball. This year two junior home rooms were victorious, with H. R. 206 winning the baseball championship and H. R. 311 the basketball championship. The games were played before school and did attract much attention among the student body.

The fine pitching of Kenneth Begeman was a determining factor in H. R. 206's victory. Home Room 311 had a fast, well-rounded basketball team, which emerged winner after a hard-fought game with H. R. 105 in the finals.

HOME ROOM 311

Back row: ARTHUR MUELLER, ALFRED SCOTT, MERRITT GWINN, CLIFFORD MOSELY
Front row: JIMMY OLIVER, DONNIE STEWART, HOLLIS HANKS





GIRLS' PEP SQUAD

Top row: FLORENCE ARMSTRONG, ELIZABETH HUNTER, LEAH RAMSEY, PRISCILLA CHAPPELL, HELEN BAUR, KATHERINE KING, MARY ANN RADKE

Middle row: GRACE GANTT, MARJORIE RUSSELL, MURIEL KASSEBAUM, MISS MAGILL, GEORGIA WEEKS, RUTH ATKINSON, BONNIE CRISMON

Bottom row: VIRGINIA BAILEY, LULA ANN CHAPPELL, ISABELLE MEREDITH, MARGARET NICHOLS, MARIE BAILEY, DORIS STADLER, PEGGY OBERMAN

BOYS' PEP SQUAD

Top row: BOB LILES, BOB DEBO, EWING HUNTER, EARL TRIPPENSEE, HARRIS DOLAN, LESTER ROSS, HAROLD WHEATLEY

Bottom row: EDWIN HAWKINS, WARD KNIEST, HARDY GLENN, JOE BOTZ, CLARENCE NEAL, WARNER ANTWEILER, JOHN RUDDER, JOHN WUNDERLICH



HIGH SCHOOL BAND

We are proud of our high school band. In the spring of 1937, under the able direction of Mr. Stanley Shaw, they received "A" rating at the National Music Contest held at Lawrence, Kansas.

PERSONNEL

Clarinets: ROBERT BASSMAN, RICHARD WEBER, BETTY BAKER, BOYD GRIFFITH, EUGENE LAKE, G. B. JOHN, RICHARD WILLIAMS, COMER BATES, NANCY ANN MOELLER, JOE GRAY, HARRIETT JACKSON, LAVERNE WINTERMEYER, EDWARD HAMPTON, JEAN PEEPER, RALPH ROSE, LEMON CATRON, RALPH COPHER, BILLY COLLET, BILLY STADLER, GLENN PRATT, TOM FARR, PEGGY DUNWIDDIE, BETTY LOU DUNLAP

Bass Clarinet: CARL SOMMERER

Alto Clarinet: BOB HOLLIWAY

Flutes: ROBERT MANSUR, BETTY JEAN HUDSON, NOEL HALL, EDDIE LEWIS, SYBIL BOWER, NELSE ADDISON

Oboes: PAUL BRADLEY, MARY I. MEREDITH, BURT BATES

English Horn: PAUL BRADLEY

Bassoons: TED SCHULTZ, FREDDIE TIETJEN, ROBERT DUNWIDDIE

Saxophones: MAURICE HALL, VIRGINIA BELSHE, CHARLES DANIELS, CHARLES GILLESPIE, ALFRED MCKEEL, CLARENCE BILLO, RALPH VIETH, DOROTHY HALL, DALE WOLFF

French Horns: BOONE SHAW, ARTHUR WARD, STANLEY HOWARD, EARL BOHNER, ROY LEGG, FRANCES FARRIS, FRED REAGEL, DAVID HOWARD, SYDNEY THURSTON, BOB FINNEY, KEMPER CHERRY

Fluegel Horn: MURPHY O'BANION

Cornets: RALPH WALKER, NORMAN MUCK, O. W. MUCK, G. W. LARKIN, BETTY VAN HORN, PHIL DALLMEYER, BOB TANNER, BILLY MARTIN

Trumpets: HERMAN CHERRY, RAYMOND MARSH, DUKE GOODALL, GRACE HIRST

Baritones: ORVILLE SHOCKLEY, JOHN AMBROSE, WARREN KLINK, ROBERT MENTEER, ALVIN MAURER

Trombones: BRUCE BAKER, VERNON HEISINGER, WILSON MACE, THOMAS GRAHAM, BEB BERRY, HAROLD PAYNE, PATTY CHARLTON, FRANCES NICHOLS, ROBERT LEWIS, W. A. HOLLOWAY, MARVIN ROBERTS, GEORGE SELVIDGE, NATHAN KASTER

Basses: STEPHEN MARKHAM, JUNIOR WYRICK, HAL WYRICK, VIRGINIA LONG, JOHN OPEL, JUNIOR DUEDNHOEFFER, JACK SNIDER, LESLIE ROSS, PAUL WYSS, BILL WYSS, BILL RUTLEDGE

Cellos: LOIS MALONE, VIRGINIA KENNEDY, VIRGINIA MICHAEL, MARGARET NICHOLS, JACQUELINE HALL, FLORENCE HYDE, MARJORIE TANNER, MARY WHITE, HELEN FOWLER

Stringed Basses: DOROTHY JOHNSON, VIRGINIA COFFELT, ROSALIE WERNER, NEAL DRESSLER

Drums: JAMES BENNETT, JIM CLAYBROOK, JOHN ELLIOTT

Tympani: PATRICIA MALONE

MR. STANLEY SHAW, *Director*



HIGH SCHOOL ORCHESTRA

We are also just as proud of our high school orchestra. Under the direction of Mr. Shaw, this musical group has attained high success. It has furnished entertainment for many of our social functions.

PERSONNEL

- Violins:* ROSALIE WERNER, VIRGINIA COFFELT, STEPHEN MARKHAM, NANCY ANN MOELLER, FRANCES CARENDER, KATHERINE KING, MARY MARKHAM, JOHN HOUCK MCHENRY, JACK HARDIN, BILL VAN DREHLE, WILFORD RAITHEL, BETTY JOE SMITH, MARY JEAN SCOBEE, PATRICIA MALONE, JEAN HARTMAN, MAXINE BLANTON, ANNABEL WITHINGTON, JOHN BASTIAN, VIRGINIA HOUSTON, WILLYNE CROY, JUNE NORFLEET, LORETTA BUTLER, ELEANOR NORFLEET, WILMA HENDRICKS, JUANITA HEINRICK, DOROTHY MILHAM, MARJORIE BUTLER, BRUCE FARR, ROBERT G. CRAIG, DORIS ROGERS, MARGARET CLAYBORN
- Violas:* HELEN COFFELT, NAOMI SHOCKLEY, LOU BALCH, MARGARET PRESTON, BONNIE BOND, ROSEMARY KEAN, ELLEN ANN MARKLE
- Cellos:* LOIS MALONE, JAQUELINE HALL, MARGARET NICHOLS, VIRGINIA KENNEDY, MARJORIE TANNER, HELEN FOWLER, VIRGINIA MICHAEL, MARY WHITE, FLORENCE HYDE
- String Bases:* DOROTHY JOHNSON, NEAL DRESSLER, LORRAINE WOLF, JANET SCRIVNER, BERNIDA MCKIEL, ROBERT SCHMUTZLER
- Oboes:* PAUL BRADLEY, ISABEL MEREDITH, HUBERT BATES
- Flutes:* ROBERT MANSUR, BETTY HUDSON, NOEL HALL, JR., SYBIL BOWER, NELSE ADDISON
- Clarinets:* BOB BASSMAN, BOYD GRIFFITH, EUGENE LAKE
- Bass Clarinet:* RICHARD WEBER
- Alto Clarinet:* ROBERT HOLLIWAY
- Bassoons:* TED SCHULTZ, FREDDIE TIETJEN, ROBERT DUNWIDDIE
- French Horns:* BOONE SHAW, STANLEY HOWARD, DAVID HOWARD, ARTHUR BOONE WARD, FREDDIE REAGEL
- Cornets:* NORMAN MUCK, RALPH WALKER, NORMAN KOLAR, G. W. LARKIN
- Trombones:* BRUCE BAKER, WILSON MACE, VERNON HEISINGER, HAROLD PAYNE
- Bass:* VIRGINIA LONG
- Drums:* JOHN ROBERT ELLIOT
- Tympani:* JIM BENNETT

MR. STANLEY SHAW, *Director*



Top row: HUDSON, PERRIGUEY, CLELLAND, MR. BENNETT, HICKS, TENNYSON, LOEFFLER
Front row: COY, JONES, YATES, WEILER, VAUGHN, CARENDER, ROSS

GIRLS' GLEE CLUB

The Girls' Glee Club, which has just been organized this year, consists of girls chosen by Mr. Bennett, the director. The girls are members of the various music classes. They have sung in some of the assemblies and other public functions.

A CAPPELLA CHOIR

The A Cappella Choir appears at many public and civic affairs under the direction of Mr. Milton Bennett. Each year it participates in the Jamboree, Christmas Show, and spring opera. This active organization has been in existence two years. This year it received a first rating in the Warrensburg music contest.

Top row: BIRKHEAD, GOLD, ALBERTSON, ANGERER, BATES, BASSMAN, HALDIMAN, MUCK, HERBST, SMITH
Middle row: JACKSON, SNORGRASS, BELSHE, MCDANIELS, BOHNER, MR. BENNETT, DAWSON, CONNELL, WRIGHT, DE SPAIN, CHAMBERS
Front row: WELSH, FISCHER, GRISSO, DALLAS, ROACH, ATKINSON, BURKEL, YERRY, DOGGETT, RAMSEY





Top row: BIRKHEAD, LILES, PARRISH, BATES, PHILLIPS, GOLD, ANTWEILER
Middle row: RAMSEY, GENTRY, HULSE, MISS ADAMS, CHAPPELL, KING
Front row: CARENDER, BAILEY, PAYNE, MALONE, WOLFF, CLINKENBEARD, SMITH

HONOR SOCIETY

The Honor Society consists of fifteen per cent of the senior class elected from the upper fourth. Students ranking highest in character, service, and leadership are selected by the faculty. Students are elected from the senior class in January and again from the junior and senior classes in May. Miss Olena Adams and Mr. John Benish are the sponsors.

DEBATE TEAM

The Debate Club, under the direction of Mr. Sanders, has done excellently this year. The Club entered three tournaments during the school year. These were held in Fulton, Webster Groves, and Warrensburg.

They also entered other debates throughout the state.

Top row: BERNICK, BATES, SAUNDERS, DOLAN
Front row: GOLD, CHAPMAN, MR. SANDERS, KING, WILLS





Top row: HERBST, MR. McMURRY, WEEKS, ROSS, GRIFFIN
Bottom row: CHAPPELL, DAWSON, BOHNER, AFFOLTER, SCHNEIDER, YERRY

COMMERCIAL CLUB

The Commercial Club has been organized for those who are interested in commercial careers.

The members have taken trips to business houses. They have seen picture shows and have heard various speakers on subjects pertaining to business affairs.

There are thirty active members under the supervision of Mr. Richard McMurry.

HOME ECONOMICS CLUB

The purpose of the Home Economics Club is to study subjects pertaining to food and clothing not covered in class work. Members participate in civic work at Christmas and have many social activities during the year.

Miss Virginia Sloan and Miss Lou Dillon are the sponsors of the club, which consists of about twenty-four members.

Top row: SCHNEIDER, MISS SLOAN, WHEELER, ELLIOTT, MISS DILLON, BURNETT
Middle row: TOEBEN, SHAMMEL, FARR, McNEW, KASSEBAUM, BEDSWORTH, SANDERS, SUNDERMEYER
Bottom row: BENTON, PRATER, SAUERHAGE, ROBERTSON, TELLMAN, SCHNEIDER, FEINSTEIN, FRICKE





Top row: HEIDBREDER, TIETJEN, CHAMBERS, LANG, KENNISON, LARKIN, SHOCKLEY, MOKE
Front row: JACKSON, JONES, MAGER, WOLFF, MISS DIXON, CONNELL, GAITHER, WILLIAMS, CLEVINGER

FRENCH CLUB

The French Club is sponsored by Miss Dixon. It meets every other week during the school year. The Club is composed of students from the first- and second-year French classes. This spring the Club gave a "French" assembly. The purpose of the club is to give students practical uses for every-day French.

G. A. A.

The Girls' Athletic Association, sponsored by Miss Willis, has been in existence for four years.

The Club develops interest and ability in sports and encourages sportsmanship. Each member has earned either a senior state "M" or a life-saving emblem as a requirement for joining.

The officers are as follows: Dorothy Scheperle, president; Pauline Emmons, vice-president; Priscilla Chappell, secretary-treasurer; Jerry Yates, reporter.

Top row: SHOCKLEY, CLINKENBEARD, SCHEPERLE, MALONE, WOLFF, CHAPPELL
Front row: CHAPPELL, EMMONS, MISS WILLIS, YATES, GORDON



The Red Black

The Red and Black, a school institution, has been published for eight consecutive years. Under the able direction of Miss Wiley the journalism class publishes the paper every two weeks, *scoops and all*.

Because of the experience gained, the staff positions are rotated every six weeks.

The senior edition has been issued each year since the discontinuance of the *Marcullus*.

Ratings at the state press conventions have been high each of these eight years of its publication.

Top row: MAYES, MALONE, EDMONDSON, BERNICK, ZIMMERMAN, TRIPPENSEE, DEBO, WHEATLY, THOMPSON, FORBES, STOCK

Middle row: HENRY, KASSEBAUM, COOPER, HULSE, GRAVES, KING, McCULLOCH, LOEFFLER, HICKS, TENNYSON

Front row: THOMPSON, CARENDER, ELLIOTT, CLINKENBEARD, NEUTZLER, MISS WILEY, GERBER, ROACH, ATKINSON, YATES, AFFOLTER



THE RED AND BLACK STAFF

THE MARCULLUS STAFF

DEBO HULSE CHAMBERS PARSONS PARRISH KASSEBAUM LATIMER YATES



LILES KING BROWN MR. BENISH MRS. O'BANION HOLLIWAY PAYNE GRAHAM
Absent—DONALD AXON

For the last five years the Marcullus has remained dormant. This year, after much hard work, it was revived. The five head positions were chosen by Mr. Deaton and the two sponsors, Mrs. O'Banion and Mr. Benish. The rest of the staff was chosen by the student body. The personnel of the staff includes Bob Debo, business manager; Betty Ann Hulse, editor-in-chief; Tom Chambers, associate editor; Helen Parsons, associate editor; Edwin Parrish, advertising manager; Muriel Kassebaum, assistant advertising manager; Bob Latimer, boys' sports editor; Jerry Yates, girls' sports editor; Bob Liles, features; Katherine King, dramatics; Jim Brown, historian; Bob Holliway, Tom Graham, snapshot editors; Ruby Payne, typist; Don Axon, calendar; Mr. Benish and Mrs. O'Banion, sponsors.



M
A
R
J
O
R
I
E

L
A
U
F

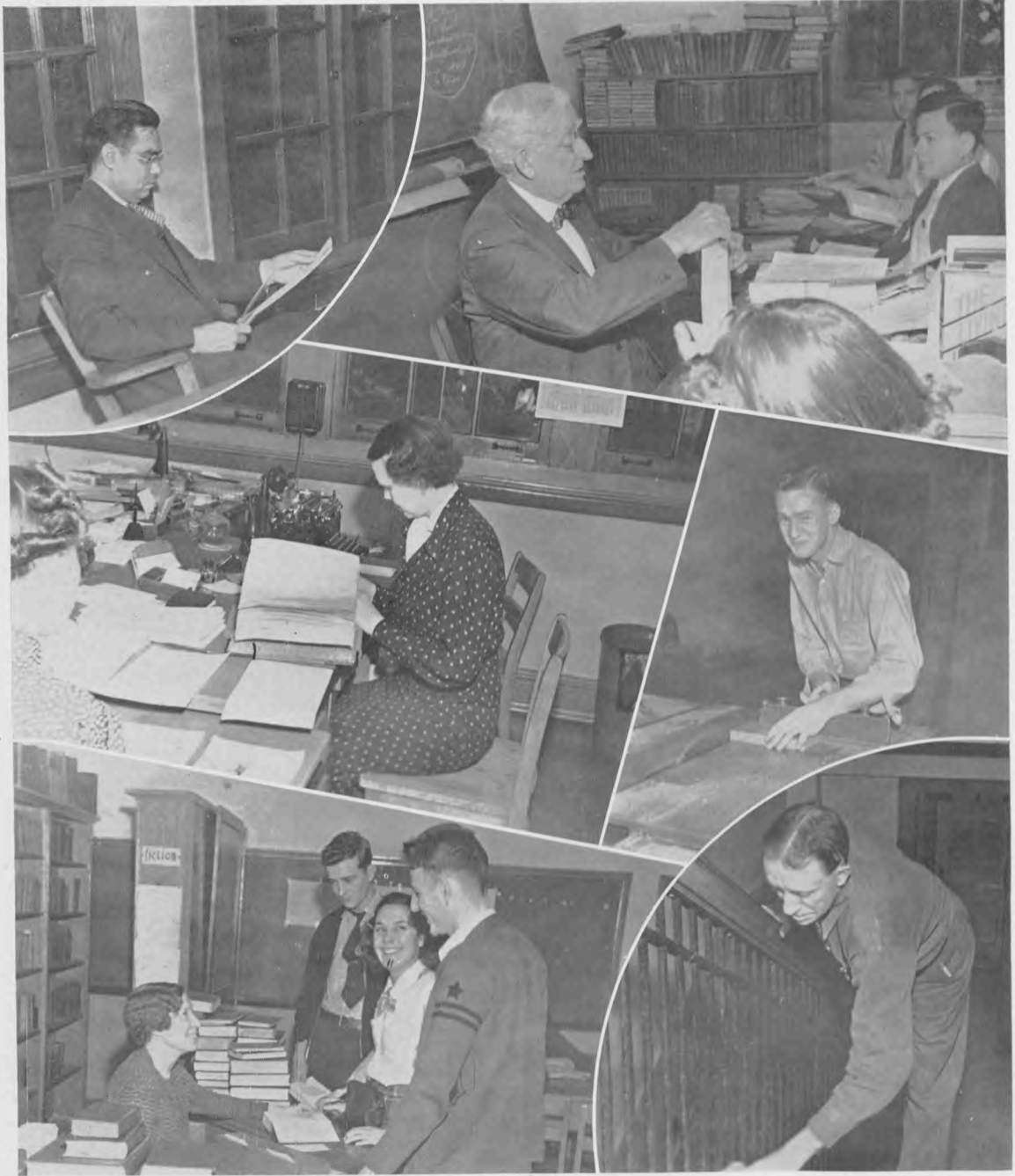
Football Queen

Marcullus Queen

R
U
T
H

A
T
K
I
N
S
O
N





1—Friendly executive

2—"Pop" Gwinn at home

3—A-1 secretary and record-keeper

4—Oh, Shaw!

5—Long-standing friendship and the fiction table

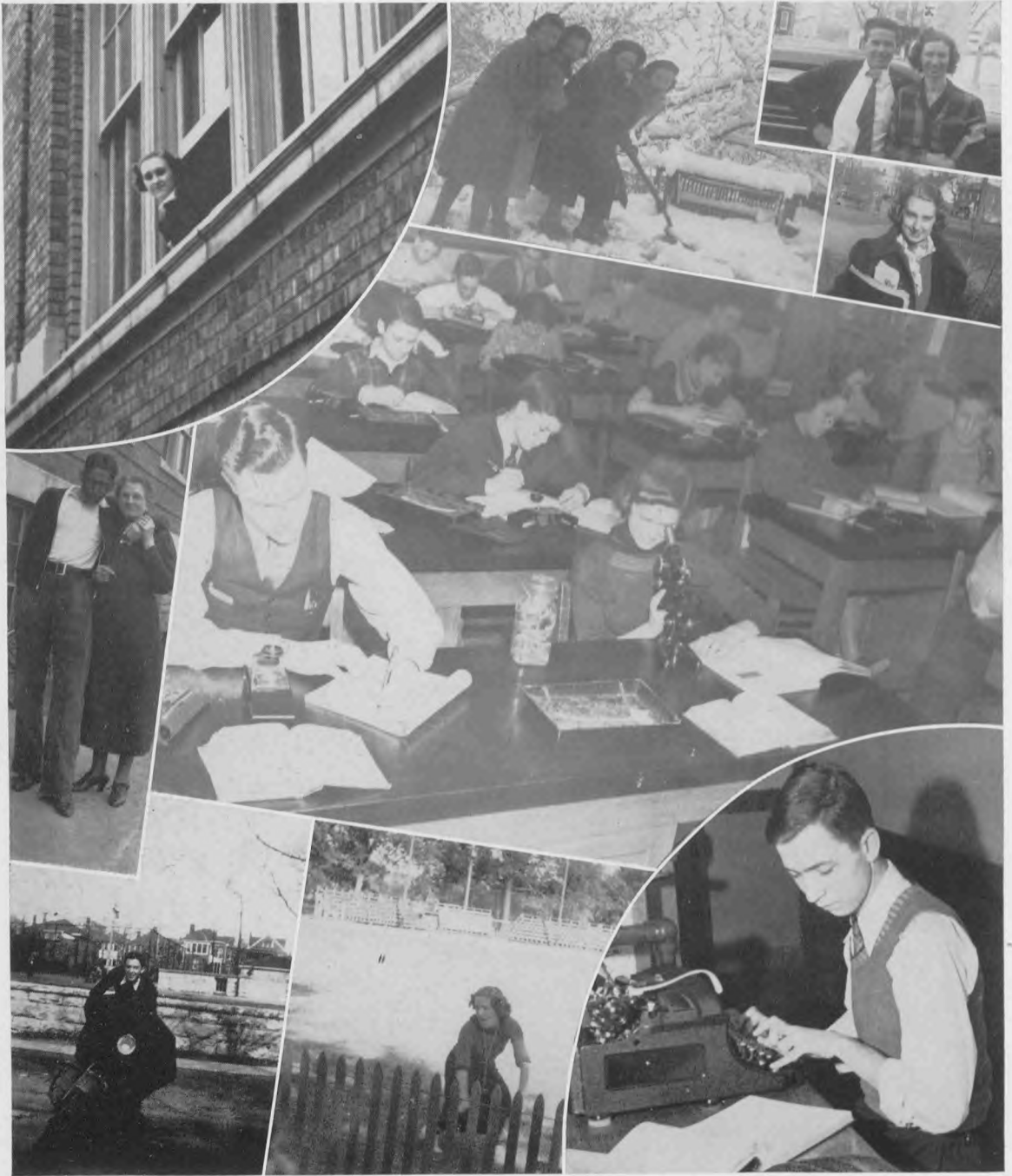
6—Herman



1—Yours for entertainment
 2—Boy, are we cute?
 3—We three

4—Dippy-dog and Bullet-Head
 5—Are we self-conscious!
 6—The sun got in her eyes

7—Looks like there's ten of 'em to us



1—One alone

2—Breakin' the ice

3—It's purely platonic!

4—"Ain't She Sweet"

5—Appearances are deceiving

6—"I'll see what he's made of!"

7—Don't you wish YOU could?

8—Come on, Jays!

9—The paper must come out!



1—Allen starts the sophie alphabet

2—You aren't the first Bailey we've had

3—His name is ART, but

4—Sophie triumvirate

5—He's not a sophie

6—And she's not a senior

7—Speaking of gems

8—"Fakuvthemateriz"



1—Ye editor and giggle Radke

2—Five men and a girl (where?)

3—"Goin' Home"

4—Wending their knowledge way

5—"Do you smell anything burning?"

6—Grand opera aspirants

7—A teacher with our business manager



1—In this man's case it's always spring!

2—Just one big happy family—

3—Farmerettes

4—We two

5—This isn't candid!

6—That light in their eyes!



JUNIOR PLAY

On March 11 the juniors presented "Speed", a rollicking three-act comedy, for their annual class play. A snappy play, laid in a summer resort and concerning a race for the lady's hand, was well received and was acclaimed a success. Miss Mayme E. Magill directed the play. Miss Virginia Sloan was assistant director.

Charles Cohen, Mary Ann Radke, Hardy Glenn, Betty Baker, Elizabeth Hunter, Troy McCubbin, Naomi Shockley, Frances Clark, and Rex McKittrick were members of the cast.



SENIOR PLAY

The seniors chose for their class play, "Smilin' Through", a fantastic comedy by A. L. Martin, which requires skilled playing and which is highly recommended for advanced high school players by the National Council of Teachers of English. It was directed by Mrs. Mary-Esther Murphy O'Banion. Leah Ramsey and Edwin Parrish were the student directors. Interspersed with humor and pathos, the senior play was commended as a finished and unusually effective performance, some of the actors being cited as nearing the standard set for professionals.

The characters were portrayed by Marjorie Lauf, Mary Frances Gentry, Comer Bates, T. Wilson, Mary Joe Smith, Katherine King, Bob Phillips, Bob Shockley, Leonard Gold, Betty Ann Hulse, Jeryl Dean Yates, Mary Ann Dallas, Priscilla Chappell, Guthrie Birkhead, Neil Berry, and Bob Lindley.

CALENDAR

SEPTEMBER

- 7—Off to school again.
- 17—Constitution Day Assembly Broadcast over KWOS.
Fine speech by "Pop" Gwinn.
Football, Jays 6—Slater 7, Here.
- 18—Jay tanksters begin practice.
- 23—Mrs. O'Banion's home room gave a tea dance for seniors only.
- 24—Football, Jays 7—Marshall 32, There.

OCTOBER

- 1—Lebanon 0—Jays 26, Here (Surprise).
- 4—Intramural baseball tournament began.
- 5—First senior class meeting.
- 8—Sedalia 0—Jays 20, There (So there).
- 15—Assembly featuring Bill Lister.
- 16—M. M. A. 7—Jays 7, There (Slipping?).
- 22—Fulton 6—Jays 0, Here (Slipped).
- 25—Marcullus sale started (Theoretically at least).
- 29—Assembly with liquid-air demonstration.
Columbia 19—Jays 7, There.
Faculty party (Even they play!).

NOVEMBER

- 5—Hannibal won here (Freak).
Red and Black changed headlines.
- 5-6—Basketball tourney.
- 11—Armistice Day assembly.
- 17—Kirksville 0—Jays 0 (Perfect).
- 18-19—Teachers' Convention (Perfectly Perfect).
- 25-26—Thanksgiving Holidays and Marcullus sales revived with the help of Mr. and Mrs. R. W. Baker.

DECEMBER

- 3—Football Dance and Coronation.
Marjorie Lauf reigned as queen.
- 7—Marcullus Staff appointed.
- 11—Swimming, Western Military Academy beat Jays, There.
- 14—Basketball, St. James 11—Jays 9 (All defense?).
- 17—Basketball, Eldon 19—Jays 16, There.
- 20—Jamboree (Remember the ballet dancers?).
- 21—Eldon beat us again.
- 23—Out for Christmas (Whoopee!).

JANUARY

- 3—Back to school.
- 7—Basket Ball, Rolla 29—Jays 28, Here.
- 10—Election of new members of the National Honor Society.
- 12—Columbia 21—Jays 19, Here.
- 14—But now Fulton 17—Jays 29, Here.
End of first semester (Just half!).

CALENDAR

JANUARY—Continued

- 18—And again St. James 19—Jays 23, Here.
- 21—Rolla 27—Jays 25, There.
- 22—Swimming, Western Military Academy 35—Jays 22, Here.
- 25—Basketball, Boonville 23—Jays 30, There (Ahem).
- 28—But Sedalia beat us there.
Debate team vs. Tipton.
- 29—Swimming, Principia 32—Jays 34 (With the great Wilson).
- 31—Staples, the Magician (Did that come out of me?).

FEBRUARY

- 3—Basketball, Sedalia 28—Jays 24, Here.
- 5—Swimming, Wyandotte 40—Jays 26 (It's a lie!).
- 8—Basketball, Columbia 30—Jays 21, There.
- 11—Boonville 15—Jays 19, There.
- 15—California 27—Jays 19, There.
- 18—Football letters presented by Coach Reaves.
- 22—Washington's birthday (Thanks, George!).
Basketball, St. James 31—Jays 23, There.
Swimming, Wyandotte 43—Jays 23, There.
- 23—Ruth Atkinson elected Marcullus queen.
- 24—Two operas by Mr. Bennett's chorus classes (Are them blue whiskers real?).
- 25—California beat us again.
- 26—Swimming, Principia 29—Jays 37 (Not bad).

MARCH

- 11—Junior play—"Speed" (It was "speedy").
- 11-12—State High School Swimming Meet (Poor Jays).
- 14—City basketball tournament began.
- 18—Assembly (Musicians—Perfect showmen!).
- 21—Captain Osborne spoke on Australia.
- 25-26—All-School Exhibit (Exhibited everything—almost).
- 29—Spring football practice starts.

APRIL

- 1—April Fool's Day—Starring Ruth Atkinson as Queen of Marcullus—Dance and Coronation.
- 7—"Jangles," Minstrel show.
- 15—Good Friday—No school (That's good!).
- 22—Senior play, "Smilin' Through".

MAY

- 6—Junior-Senior Banquet and Dance.
- 13—Pep Squad Dance and Senior Class Day.
- 20—Last day of school.
- 22—Baccalaureate.
- 24—Commencement.
- 26—Few hangers-on, Usual sob stuff!



Advertising



The Marcellus business staff recommends to the student body the business firms whose advertisements are shown on the following pages. Their support is essential to the success of the yearbook; they merit the patronage of those who have at heart the interests of the Jefferson City Senior High School.



COMPLIMENTS
OF
TWEEDIE FOOTWEAR
CORPORATION

*Fashion
Footwear
for
Women*



BARTLETTS

KIESELBACH AND PEASNER

CONGRATULATIONS AND BEST WISHES
TO THE CLASS OF 1938

OPPOSITE COURTHOUSE

PHONE 268

CONGRATULATIONS
TO THE CLASS
OF '38

S. H. KRESS & CO.
5-10-25¢ STORE

CZARLINSKYS

*Clothes for Lad
and Dad*

304 E. HIGH STREET

WEATHERBY'S

122 E. HIGH
JEFFERSON CITY, MO.

QUALITY WEARABLES AT
A FAIR PRICE

●
COME IN AND SEE US
WHEN IN NEED OF
ANYTHING TO WEAR

Guaranteed Complete Automobile Service

Auto-Lite Service
United Motors Service
Motorola Home and Car Radios
Goodrich Tires, Accessories, and Batteries

HARRY BLACKWELL Inc.

JEFFERSON AND MILLER STREETS

TEL. 129-130



World's First Car With Conditioned Air

DELIVERED IN JEFFERSON CITY

NASH—Lafayette "6"	\$825.00
NASH—Ambassador "6"	1,028.00
NASH—Ambassador "8"	1,175.00

SHIKLES MOTOR COMPANY

208 BROADWAY

PHONE 1396

A City Is Only As Good As Its Water Supply

The plaint of Coleridge's Ancient Mariner — "Water, water everywhere, but not a drop to drink"— is the most powerful expression of misery in literature. We who are blessed with plenty of pure water are blessed indeed!

CAPITAL CITY WATER COMPANY

Your Public Servant For Years

FINE DIAMONDS
WATCHES—ELGIN
BULOVA, LONGINES
HAMILTON

Convenient Credit

STEGMAIER

Jeweler — Optometrist

219 E. HIGH STREET

KEEP YOUR FEET IN BROWN-
BILT SHOES

Moore-DeRienzo

BROWN-BILT SHOE STORE

203 EAST HIGH STREET



A. Brandenberger Drug Co.

*Prescriptions Carefully
Compounded*

PHONE 33 FREE DELIVERY

BISHOP'S

*Guaranteed
Flowers
Always
Please*

212 MADISON PHONE 2590

KEEP YOUR FEET FIT
WITH SHOES THAT
ARE ALWAYS CORRECT

from

BURKEL & BOSCH

128 E. HIGH STREET

J. C. PENNEY DEPARTMENT STORE

Better Light—Better Sight

Missouri Power & Light Co.

ELECTRIC SERVICE IS CHEAP IN
JEFFERSON CITY

JEFFERSON CITY

240 E. HIGH PHONE 1698

Begin Early . . .

to build a foundation for success through a Savings Account in a National Bank. Only \$1.00 is required to open an account.

FEDERAL DEPOSIT INSURANCE
NATIONAL BANK EXAMINATION
MEMBER FEDERAL RESERVE SYSTEM
MEMBER FEDERAL DEPOSIT INSURANCE CORPORATION

Established 1865

THE EXCHANGE NATIONAL BANK OF JEFFERSON CITY, MO.

" W. A. DALLMEYER
President

HUGH STEPHENS
Chairman of the Board

O. W. RAITHEL
Cashier

THOS. LAWSON PRICE
Vice-President

PAUL BOSCH
Assistant Cashier

JOS. H. DULLE
Vice-President

FRANK RAILTON
Assistant Cashier

JOHN SINCLAIR
Director

R. E. DALLMEYER
Assistant Cashier

W. L. HAGER
Vice-President

INDISPENSABLE

To Business

When you finish your schooling and enter business or a profession you will soon appreciate how important and indispensable are the "tools" of business: the hundreds of items—large and small—in daily use which help make the conduct of business systematic and efficient.

The personnel of this organization knows the needs of business and is in a position to recommend and supply promptly those stationery items which best fit the needs of the individual business.

MIDLAND STATIONERY STORE

*Stationery . . . Office Supplies . Filing Supplies
and Equipment*

JOBE'S JEWELRY STORE

Congratulations
and best wishes
to the Class of
1938



222 E. HIGH
PHONE 2501

COMPLIMENTS OF

Arthur W. Ellis, Inc.

Headquarters for

GOODYEAR TIRES

and

PREST-O-LITE
BATTERIES

and

AUTOMOBILE
ACCESSORIES

MONROE AT McCARTY
PHONE 913

COMPLIMENTS OF

WEBER ICE CREAM CO.

Manufacturers of

MEADOW GOLD ICE CREAM

MOBERLY
MEXICO
CLINTON

JEFFERSON CITY

CALIFORNIA
SEDALIA
BOONVILLE

Ask Your Grocer for
JACK SPRATT FOOD PRODUCTS
Try That Delicious JACK SPRATT
COFFEE

*The Best of Everything
Distributed By*

SHRYACK-HIRST
Grocery Company
213-215 MADISON STREET
JEFFERSON CITY MISSOURI

McKINNEY BROS.

Extends Congratulations
and Wishes to One
and All

MILO H. WALZ

COMPLETE HOME
FURNISHINGS

*Your Money Buys More
at Walz's Store*

128 EAST DUNKLIN STREET
704-6-8 MADISON STREET
JEFFERSON CITY MISSOURI

216 MADISON STREET
PHONE 362

A DIAMOND RING or a GRUEN WATCH
from

Phil A. Dallmeyer's Jewelry Store

is a gift you will love
to give or receive

218 E. HIGH STREET

We Fix Old Timers

RUTH RUST
Photographer

210 E. HIGH

PHONE 918

JEFFERSON
CLEANERS

CLEANING — PRESSING
ALTERING

MADE-TO-MEASURE
SUITS

222 E. HIGH

PHONE 982

A. S. SENEVEY

NEHI Bottling Co.

Bottlers of
NEHI FRUIT FLAVORS
ROYAL CROWN COLA
and
PAR-T-PAK

PHONE 330

103 MONROE STREET

MEYERHARDT'S

125 E. HIGH STREET

*The Leading Men's Wear
Store of Jefferson
City*

COMPLIMENTS OF

HEISINGER MOTOR CO.

PHONE 44

COMPLETE

24-HOUR SERVICE

315 E. HIGH STREET

A Banking Connection

To Supplement Your Diploma . . .

IT IS an indication of stability and sound business character for young men and women to establish a connection with a progressive bank—one that can be looked to for help and advice in financial matters that can only be solved as a result of broad experience.

*Save
Something
Regularly!*

As an institution dedicated to the encouragement of Thrift and Enterprise, this bank invites you to come here. You'll find a ready welcome and a sincere desire to see your plans for the future achieved.

CENTRAL MISSOURI
TRUST COMPANY

MEMBER FEDERAL DEPOSIT INSURANCE CORPORATION

FRENCHIE'S CAFE

wishes to thank
you for your
patronage

BUSCH'S



PHONE 121



Photographs Live . . .

as a reminder of the
happiest days of your
life . . . as a cherished
remembrance for your
friends!

ENGLISH STUDIO

PHONE 2210 223 MADISON STREET

NEVER SURPASSED
ZORIC
DRY CLEANING
ODOR FREE



PHONE
302

PHONE
303

Capital City Laundry
and Dry Cleaners

315-317 MONROE STREET

Home Building and Loan Association

403 CENTRAL TRUST BLDG.

Systematic Savings
Real Estate Loans

JOHN A. LINHARDT . . . *President*
JOHN O. NEWBERRY . . . *Secretary*

PHONE 186

BE SMARTLY DRESSED

Buy Your Outfit

from

FEINSTEIN'S

Greetings to the members and
teaching staff of the
Class of 1938

DeWyl Drug Store

225 E. HIGH

PHONE 135

Compliments of

F. W. Woolworth Co.

224 E. HIGH ST.

JEFFERSON CITY, MO.

The Marcellus Staff appreciates the
loyalty and the support given by the
business men who have exemplified
their interest in our school by
patronizing the Marcellus
ad section.

"

Greetings

Commonwealth Chevrolet Co.

"You'll Be Ahead With A Chevrolet"

216-218 E. CAPITOL AVE.

PHONES 885-2222

AUTOGRAPHS