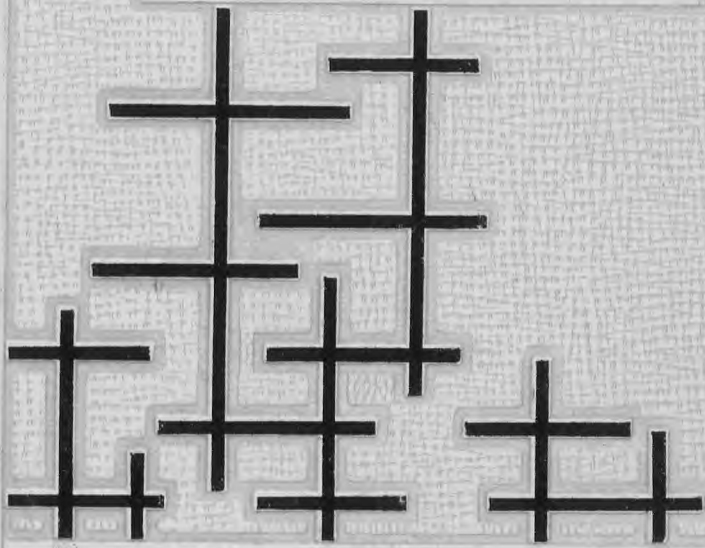
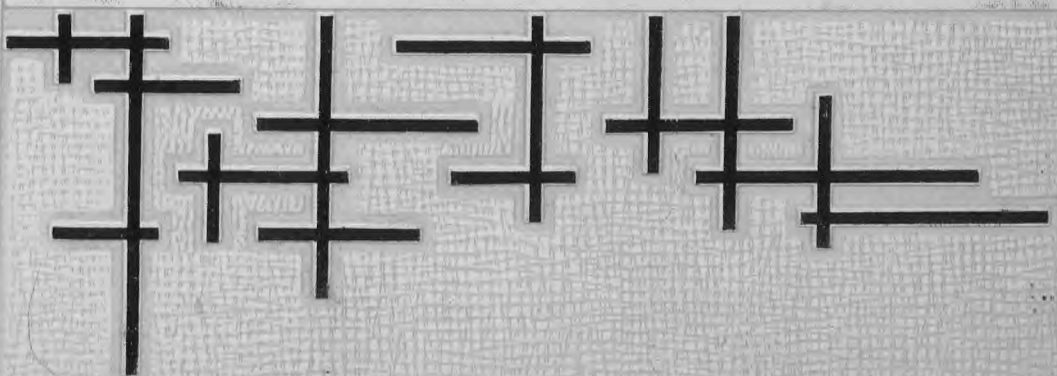


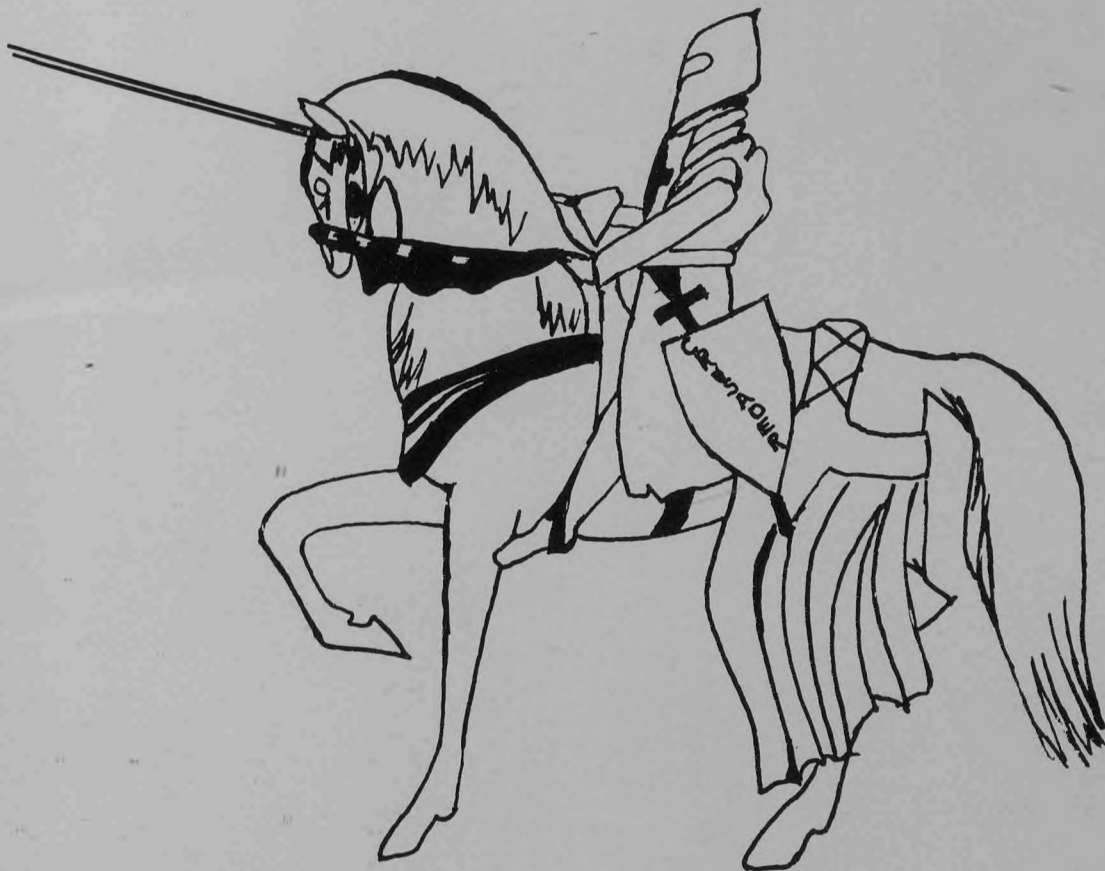
nineteen hundred fifty nine



THE CRUSADER



**THE  
CRUSADER**



**1959**

**HELIAS HIGH SCHOOL**

**JEFFERSON CITY, MISSOURI**



MID-CONTINENT PUBLIC LIBRARY  
Genealogy & Local History Branch  
317 W. Highway 24  
Independence, Mo. 64050

GE

MID-CONTINENT PUBLIC LIBRARY  
  
3 0000 11681770 5

**FEATURING**

**THOSE FORCES WHICH PRODUCE**

**THE HELIAS STUDENT**



PICTURED at left:

Crucifix in main entrance  
of Helias High School



THIS IS YOUR LIFE AT HELIAS. . .

With a program based on the ideals and teachings of Christ, Helias High School presents to its students a rich variety of experiences. Each facet of human personality is considered here. There is a time to pray and a time to relax. There is a time to listen and learn, and a time to chat and enjoy delightful companionship.



ADMINISTRATION...

**ADMINISTRATION...**

ADMINISTRATION...



BROTHER  
J. EDMUND, F. S. C.

Principal of the  
Boys' Department

Bookkeeping

## FORCES WHICH PLAN WISELY

SISTER MARY  
PHILIP, S. S. N. D.

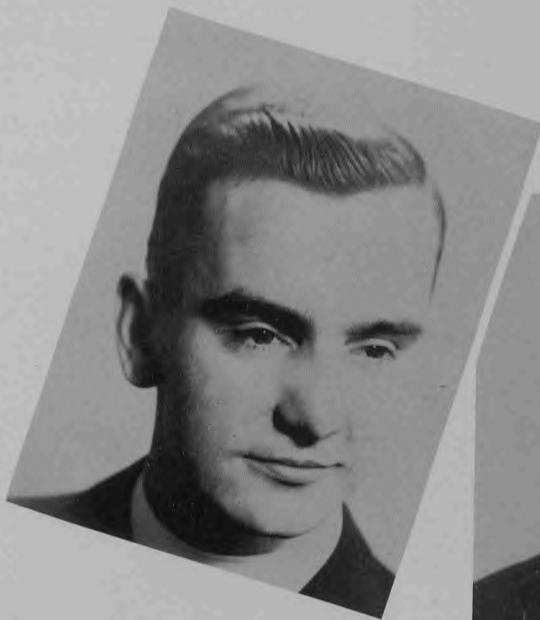
Principal of the  
Girls' Department

World History









## FACULTY 1959

The Girls' Department draws upon the wisdom and theological training of Father William Forst for its Freshmen, of Father Norman Ahrens for its Sophomores, of Father John Buchanan for its Juniors, of Father John Vereb for its Seniors.

(Names listed from top to bottom)





SISTER M. PAULINUS, S. S. N. D.  
English, Latin; Junior Classical League.

SISTER M. FRIEDA, S. S. N. D.  
Social Studies; Good Counsel Clubs, Junior-Senior Prom, Senior Breakfast.

SISTER M. MALACHY, S. S. N. D.  
Home Economics, Mathematics; Student Council Sponsor.



SISTER M. BLANCHE, S. S. N. D.  
English; Dramatics, Yearbook Moderator.

## FACULTY 1959

SISTER M. OLGA, S. S. N. D.  
Librarian



SISTER MARIE ANNE, S. S. N. D.  
Business.

MISS PATRICIA BUCHANAN  
Business, Social Studies, Mathematics; Legion of Mary.



**BROTHER I. TIMOTHY, F. S. C.**

English and Social Studies; Legion of Mary, Athletic Director, Sports Moderator, Junior-Senior Prom.

**MR. ROBERT SCHNIEDERS**

English and Physical Education; Head Football Coach, "B" Basketball Coach, Head Track Coach.

**MR. JAMES RACKERS**

Social Studies and Physical Education; Head Basketball Coach, Assistant Football and Track Coach.



**SISTER MARIE PAUL, S. S. N. D.**  
English, Chorus; Triple Trio.

**SISTER MARY ALPHONSE, S. S. N. D.**  
Science, Mathematics; Science Club, Pepette Moderator, Junior-Senior Prom, Senior Breakfast.

**MRS. WM. PARKHURST**  
Girls' Physical Education; Pepette Moderator.

## FACULTY 1959

**BROTHER L. ROLAND, F. S. C.**

English, Social Studies, Commercial; Cafeteria Manager.



**BROTHER J. SEBASTIAN, F. S. C.**

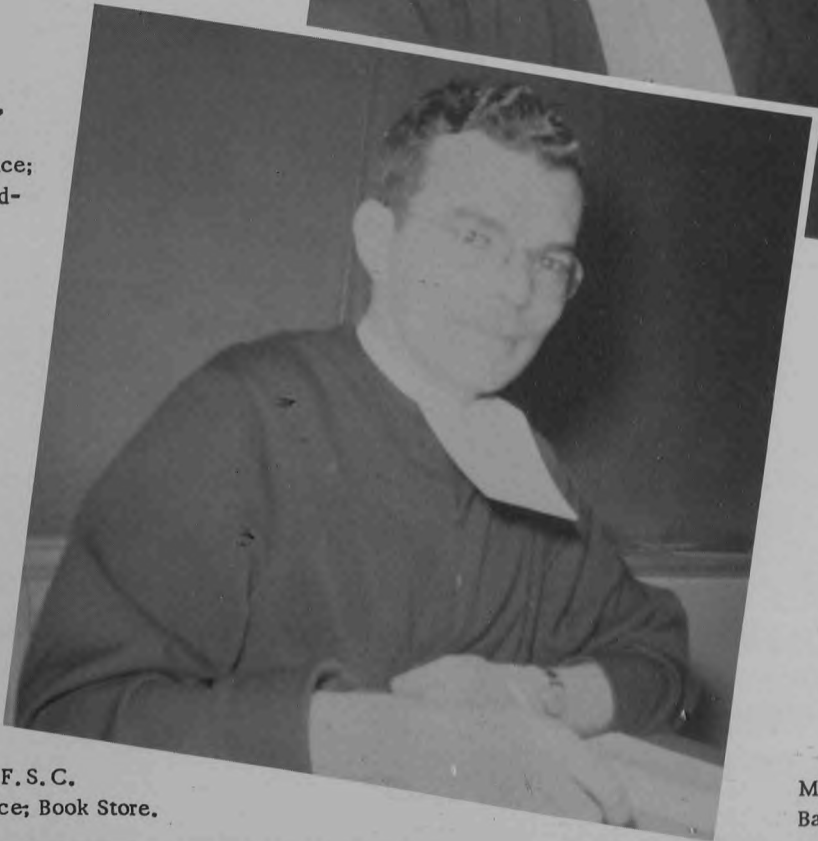
Manual Training, Mathematics; Assistant Principal, Basketball Moderator.

BROTHER J. EDWARD, F. S. C.  
Social Studies, Commercial; School Play Program,  
Band Moderator, Freshman Football Coach.

## FACULTY



BROTHER L. JAMES,  
F. S. C.  
Mathematics, Science;  
Athletic Booster Mod-  
erator.



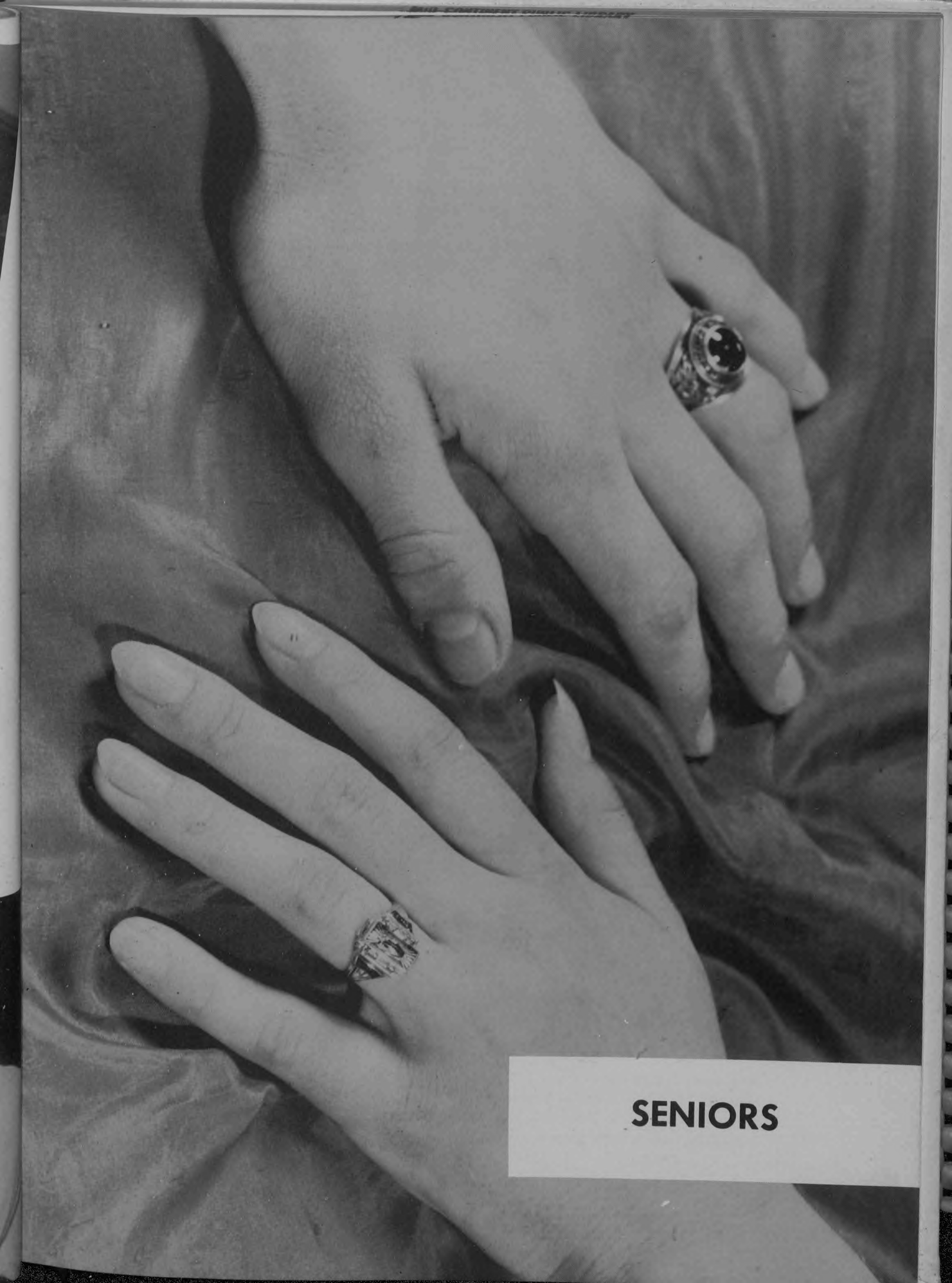
BROTHER GEORGE  
F. S. C.  
English, Latin;  
Vocations, Benildus  
Club, School Paper.

BROTHER ARNOLD, F. S. C.  
Mathematics, Science; Book Store.

1959

MR. JAMES ROGERS  
Band, Chorus.





**SENIORS**



LAWRENCE W. GNAGI  
President  
St. Peter

Attendance 1, 2; Class Officer 1, 2, 3, 4; Hi-Lites Staff 4;  
Senior Play 4; Honor Roll 1, 2; National Honor Society 4;  
Football 1, 2, 3, 4; Basketball 1, 2, 3; Track 1, 2, 3, 4, In-  
tramurals 1, 2, 3, 4; Benildus Club 1, 2; Oratory 1, 2; Boys'  
State 3; Legion of Mary 3.

## SENIOR



CLARENCE JOSEPH HEMMEL  
Vice President  
Immaculate Conception

Attendance 1, 2, 4; Hi-Lites Staff Editor; Class Officer 1,  
2, 3, 4; Senior Play 4; Honor Roll 1, 2, 3, 4; National Honor  
Society 3, 4; Football 1, 2, 3, 4; Basketball 1, 2; Track 1,  
2, 3, 4; Intramurals 1, 2, 3, 4; Benildus Club 1, 2; Oratory  
1, 2; Band 1, 2, 3; Boys' State 3; Legion of Mary 3, 4.

## CLASS



RALPH F. VOSS  
Secretary  
St. Peter

Attendance 1; Class Officer 1, 2, 3, 4; Honor Roll 1, 2, 3, 4;  
National Honor Society 4; Football 1, 2, 3, 4; Basketball 1,  
2; Track 1, 2, 3, 4; Intramurals 1, 2, 3, 4; Benildus Club 1;  
Boys' State 3.

## OFFICERS



RONALD J. PRENGER  
Treasurer  
St. Peter

Attendance 1, 2, 4; Class Officer 1, 3, 4; Hi-Lites Staff 4;  
Honor Roll 1, 2, 3, 4; National Honor Society 4; Football  
1, 2, 3, 4; Basketball 1; Track 1, 2, 3, 4; Intramurals 1, 2,  
3; Benildus Club 1; Boys' State 3; Legion of Mary 3, 4.

PATRICIA CONNOR

President

Immaculate Conception

Attendance 1; Good Counsel 1, 2, 3, 4; Choral Club 2, 3;  
Class Officer 4; Hi-Lites Staff 4; Intramurals 1, 2, 4; Pep-  
ettes 1, 2, 3, 4; Science Club 4; Latin Club 2; Civics Club 1.



## SENIOR



LYNNE ROSE HAGER

Vice President

St. Peter

Attendance 1, 2, 3, 4; Good Counsel 1, 2, 3, 4; Choral Club  
2, 3; Class Officer 3, 4; Hi-Lites Staff 4; Intramurals 1, 2,  
3, 4; Pepettes 1, 2, 3, 4; Senior Play 4; Cheerleader 2, 3, 4;  
Attendant to Queen 4; Science Club 4; Majorettes 1;  
Civics Club 1; Latin Club 2.

## CLASS

LINDA SCOTT

Secretary

St. Peter

Attendance 1; Good Counsel 1, 3; Class Officer 3, 4; Hi-  
Lites Staff 4; Band 1, 2, 3, 4; National Honor Society 3, 4;  
Science Club 4; Latin Club 2; Civics Club 1.



## OFFICERS



JANET ROBINETT

Treasurer

St. Peter

Good Counsel 1, 2, 3, 4; Class Officer 1, 2, 4; Pepettes 1, 2,  
3; Student Council 4; Girls' State 3; Civics Club 1.



## SENIOR CLASS OF '59



Theresa Adrian

Immaculate Conception

Good Counsel 1, 2, 3, 4; Choral Club 2, 3, 4;  
Class Officer 3; Intramurals 1, 2, 3, 4; Pep-  
ettes 1, 2, 3, 4; Civics Club 1.

Margaret A Mend

St. Peter

Attendance 1, 2; Good Counsel 1, 2, 3, 4;  
Choral Club 1; Civics 1.



Ann Becker

Immaculate Conception

Good Counsel 1, 2, 3, 4; Choral Club 1, 2, 3,  
4; Intramurals 1, 2, 4; Pepettes 1, 2, 3, 4;  
Science Club 4; Majorettes 1, 2, 3, 4; Latin  
Club 2; Civics Club 1; Mary's Messenger 2.

Gerald Bernskoetter

St. Stanislaus

Honor Roll 1; Football 1; Track 1; Intramu-  
rals 1, 2, 3, 4.



Kenneth Bernskoetter

Immaculate Conception

Honor Roll 2; Intramurals 1, 2; Benildus  
Club 1.

Herbert Blume

St. Peter

Attendance 1, 2; Honor Roll 1, 2; Football  
1; Track 1; Intramurals 1, 2, 3; Benildus 1;  
Oratory 4.



Sandra Bosch

Immaculate Conception

Attendance 3, 4; Good Counsel 1, 2, 3, 4;  
Choral Club 2, 3, 4; Intramurals 1; Pepettes  
1, 2, 3, 4; Civics Club 1.

Joan Bruegging

Immaculate Conception

Good Counsel 1, 2, 3, 4; Class Officer 4; In-  
tramurals 1; Pepettes 1, 2, 3, 4; Senior Play  
4; Band 1, 2, 3, 4; Student Council 3; Science  
Club 4; Latin Club 2; Civics Club 1; Na-  
tional Honor Society 4.

## SENIOR CLASS OF '59

DONNA BUERSMEYER

St. Thomas

Attendance 1, 2; Good Counsel 1, 2, 3, 4;  
Class Officer 1, 2; Hi-Lites Staff 4; Intra-  
murals 1; Pepettes 4; Senior Play 4; Attend-  
ant to Queen 4; Girls' State 3; Civics Club  
1; National Honor Society 4.

MARILYN CHAMPLAIN

St. Peter

Attendance 1; Good Counsel 1, 2, 3, 4; Hi-  
Lites Staff 4; Intramurals 1, 2, 3; Pepettes 1,  
2, 3, 4; Science Club 4; Civics Club 1; Latin  
Club 1, 2.

JAMES DE LONG

Immaculate Conception

Attendance 2, 4; Class Officer 4; Hi-Lites  
Staff 4; Honor Roll 1, 2, 3, 4; Football 1,  
Track 1; Intramurals 1, 2, 3, 4; Benildus Club  
1, 2; Oratory 2; Boys' State 3; Legion of  
Mary 4.

MICHAEL F. DORGE

St. Peter

Class Officer 1, 2; Football 1, 2; Basketball  
1, 2; Track 1, 2; Intramurals 1, 2, 3, 4.

ELAINE DULLE

St. Peter

Attendance 1; Good Counsel 1, 2, 3, 4; Class  
Officer 3; Intramurals 1; Pepettes 1, 2, 3, 4;  
Civics Club 1.

RICHARD DULLE

St. Peter

Attendance 2, 3, 4; Track 2; Intramurals 1,  
2, 3, 4; Benildus Club 1, 2; Student Manager  
4; Legion of Mary 3, 4.

JOAN EDDY

Immaculate Conception

Attendance 1; Good Counsel 1, 2, 3, 4; Choral  
Club 2, 3; Intramurals 1, 4; Pepettes 1, 2, 3;  
Senior Play 4; Band 4; Latin Club 2; Civics  
Club 1.

BERNARD FORCK

Immaculate Conception

Class Officer 3, 4; Football 1, 2, 3, 4; Basket-  
ball 1, 2; Track 1, 2, 3; Intramurals 1, 2, 3, 4;  
Benildus Club 1; Band 3.



## SENIOR CLASS OF '59



CHARLENE FRANK

Immaculate Conception

Attendance 1, 2, 3, 4; Good Counsel 1, 2, 3, 4; Choral Club 2, 3; Intramurals 1, 2, 3, 4; Pepettes 1, 2, 3, 4; Yearbook Staff 4; Latin Club 2; Civics Club 1; Science Club 4; National Honor Society 4.

SHIRLEY GEMEINHARDT

Immaculate Conception

Attendance 1, 2; Pepettes 1, 2, 3; Civics Club 1.



ROBERT GRONER

Immaculate Conception

Class Officer 2; Benildus Club 1.

JOHN HAAF

Immaculate Conception

Attendance 1, 2; Football 1; Intramurals 3.



HAROLD F. HAGNER

Immaculate Conception

Attendance 1; Class Officer 1, 2; Honor Roll 1; Football 1, 2, 3, 4; Basketball 1, 2; Track 1, 2, 3; Intramurals 1, 2, 3, 4.

ANN HALL

Immaculate Conception

Good Counsel 1, 2, 3, 4; Choral Club 2, 4; Class Officer 2; Hi-Lites Staff 4; Intramurals 1, 2, 3, 4; Pepettes 1, 2, 3, 4; Senior Play 4; Football Queen 4; Science Club 4; Latin Club 2; Civics Club 1.



PATRICIA HARTMAN

St. Peter

Good Counsel 1, 2, 3; Yearbook Staff; Civics Club 1.

CAROL HAYS

St. Peter

Attendance 1, 4; Good Counsel 4; Pepettes 1; Band 1, 2, 3, 4; Mother McAuley Club 3; Science Club 3; Choir 3; Transferred from Immaculate Conception, Memphis, Tenn.

## SENIOR CLASS OF '59

MARY ANN HEALEY

St. Peter

Attendance 1, 2; Good Counsel 1, 3; Band 1, 2, 3, 4; Science Club 4; Latin Club 2; Civics Club 1; National Honor Society 4.

DOLORES HECK

St. Peter

Good Counsel 3, 4; Science Club 4; Entered from Dixon High School.



CLARENCE HECKMAN

St. Stanislaus

Attendance 2, 3; Honor Roll 1; Intramurals 1, 2, 3, 4.

DARLENE HEISLEN

St. Peter

Attendance 1, 2, 3, 4; Good Counsel 1, 2, 3, 4; Choral 2, 3, 4; Hi-Lites Staff 4; Intramurals 1, 2, 3, 4; Pepettes 1, 2, 3, 4; Senior Play 4; Student Council 2, 4; Yearbook 1, 2, 3; Science Club 4; Majorettes 1, 2, 3, 4; Latin Club 2; Civics 1.



PATRICIA HENTGES

St. Martin

Attendance 1, 2, 3, 4; Good Counsel 1, 2, 3, 4; Science Club 4; Civics 1; Latin Club 2.

WILLIAM HENTGES

Immaculate Conception

Attendance 1, 2, 3, 4; Honor Roll 1, 2, 3, 4; National Honor Society 3, 4; Football 1, 2, 3, 4; Track 1, 2, 3, 4; Intramurals 1, 2, 3, 4; Benildus 1, 2; Legion of Mary 3, 4.



THERESA HERNDON

Entered from St. George, Linn, Mo.; Good Counsel 4; Chorus 1, 2, 3, 4; Class Officer 1; Pepettes 4; Band 1, 2, 3, 4; Oratory 2; Linn Dance Band 2, 3.

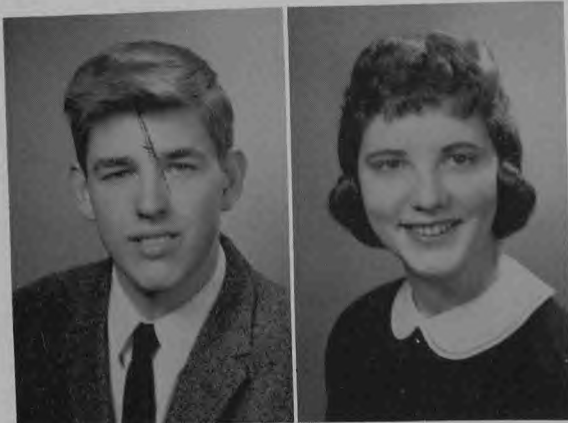
JEANNE HIESBERGER

Immaculate Conception

Good Counsel 1, 2, 3, 4; Choral Club 2, 3, 4; Class Officer 1, 2; Pepettes 1, 2, 3, 4; Senior Play 4; Band 2; Student Council 2, 4; Science Club 4; Civics Club 1.



## SENIOR CLASS OF '59



ROBERT HUBER

St. Peter

Attendance 1, 2, 3; Class Officer 1; Football 3, 4; Track 3; Intramurals 1, 2, 3, 4.

ALICE KAISER

St. Thomas

Attendance 1, 2, 3; Good Counsel 1, 2, 3, 4; Class Officer 1; Intramurals 1, 2; Civics Club 1.



ROBERT KAUFFMAN

St. Martins

Attendance 1, 2; Track 1, 2, 3; Intramurals 1, 2, 3, 4.



KAREN KELLER

Immaculate Conception

Good Counsel 1, 2, 3; Choral Club 2; Pepettes 1, 2, 3, 4; Band 3; Science Club 4; Latin Club 2; Civics Club 1.



THOMAS KREMER

St. Peter

Attendance 2, 3; Class Officer 3; Football 1, 2, 3, 4; Track 1, 2, 3; Intramurals 1, 2, 3; Benildus Club 1.



JAMES LANDWEHR

Immaculate Conception

Hi-Lites Staff 4; Senior Play 4; Honor Roll 2, 3, 4; Basketball 2; Intramurals 2, 3, 4; Student Manager 3, 4; Golf 2, 3, 4.



DAVID LOEHNER

Immaculate Conception

Attendance 1, 2, 3, 4; Football 1, 2, 3, 4; Basketball 1, 2, 3, 4; Track 1, 2, 3, 4; Intramurals 1, 2, 3, 4; Benildus Club 1, 2; Student Manager 4; Legion of Mary 3.



JOYCE LOEHNER

Immaculate Conception

Good Counsel 1, 2, 3, 4; Choral Club 2, 4; Class Officer 2; Intramurals 1, 2, 3, 4; Pepettes 1, 2, 3, 4; Science Club 4; Civics Club 1; Latin Club 2.

## SENIOR CLASS OF '59

ROSELLA LOETHEN

St. Thomas

Attendance 2; Good Counsel 1, 2, 3, 4; In-  
tramurals 1, 2; Civics Club 1.

MARY ANN LUEBBERING

St. Thomas

Attendance 2; Good Counsel 1, 2, 3, 4; Choral  
Club 3; Intramurals 1, 2, 4; Civics Club 1.



REUBEN LUEBBERING

St. Thomas

Attendance 3; Honor Roll 1, 2, 3, 4; National  
Honor Society 4; Intramurals 1, 2, 3, 4.

CHARLES LUEBBERT

St. Peter

Attendance 1, 2, 4; Football 3, 4; Basketball  
1; Track 1, 2, 3; Intramurals 1, 2, 3, 4; Band  
1, 2, 3.



NORMA McDOWELL

St. Peter

Attendance 2; Good Counsel 1, 2, 3; Civics  
Club 1.

BENJAMIN MANKIN

St. Peter

Football 1, 2, 3, 4; Basketball 1, 2, 3; Track  
1, 2, 3; Intramurals 1, 2, 3.



BETTY ANN MARKWAY

Immaculate Conception

Attendance 2; Good Counsel 1, 2, 3, 4; Choral  
Club 2, 3, 4; Class Officer 3, 4; Intramurals 1,  
4; Pepettes 1, 2, 3, 4; Senior Play 4; Student  
Council 4; Yearbook Staff 4; Science Club 4;  
Civics Club 1; Latin Club 2.

BARBARA MERTENS

St. Peter

Good Counsel 1, 2, 3, 4; Choral Club 2, 3, 4;  
Pepettes 1, 2, 3, 4; Civics Club 1.



## SENIOR CLASS OF '59



MARY JANE NENTWIG

Immaculate Conception

Good Counsel 1, 2, 3, 4; Choral Club 2, 4; Intramurals 1, 2; Pepettes 1, 2, 4; Science Club 4; Latin Club 2, 3; Civics Club 1.

JAMES NEVINS

Immaculate Conception

Attendance 4; Class Officer 2; Honor Roll 1; Football 1, 2, 3, 4; Basketball 1; Track 1, 2, 3; Intramurals 1, 2, 3, 4; Benildus Club 1; Band 1.



KENNETH OIDTMAN

St. Peter

Attendance 1, 2, 3, 4; Senior Play 4; Honor Roll 1; Football 2, 3, 4; Track 2, 3, 4; Intramurals 1, 2, 3; Benildus Club 1; Legion of Mary 3.

MARVIN L. ORTMEYER

Immaculate Conception

Attendance 1, 2; Honor Roll 1; Football 1; Intramurals 2, 3, 4; Benildus Club 1.



THOMAS PARRIS

Immaculate Conception

Honor Roll 1, 3; National Honor Society 4; Football 1, 2, 3; Track 1; Intramurals 1, 2; Benildus Club 1.

DOROTHY PATTERSON

St. Peter

Attendance 1, 2, 3, 4; Good Counsel 1, 2, 3, 4; Choral Club 2, 4; Hi-Lites Staff; Intramurals 1, 2, 3; Pepettes 1, 2, 3, 4; Senior Play 4; Science Club 4; Majorettes 1; Latin Club 2; Civics Club 1.



WILLIAM POHL JR.

Immaculate Conception

Senior Play 4; Football 1; Track 1; Basketball 1; Intramurals 1, 2; Benildus Club 1.

RUTH ANNE PRENGER

St. Peter

Attendance 1, 2; Good Counsel 1, 2, 3, 4; Choral Club 4; Class Officer 1; Intramurals 1, 4; Pepettes 1, 2, 3, 4; Senior Play 4; Band 1, 2; Yearbook Staff 4; Science Club 4; Latin Club 2; Civics Club 1.

## SENIOR CLASS OF '59

CLARA ANNE RACKERS

St. Stanislaus

Attendance 1, 2, 3, 4; Good Counsel 1, 2, 3, 4;  
Intramurals 1, 2, 3, 4; Civics Club 1.

EVELYN RACKERS

St. Peter

Attendance 1, 2, 3, 4; Good Counsel 1, 2, 3, 4;  
Choral Club 2, 3; Class Officer 1, 2; Intramu-  
rals 1, 2; Hi-Lites Staff 4; Pepettes 1, 2, 3, 4;  
Senior Play 4; Mary's Messenger 2; Student  
Council 4; Attendant to Queen 4; Yearbook  
Staff 1, 2, 3, 4; Science Club 4; Civics Club 1;  
Latin Club 2; National Honor Society 4.

JAMES REICHART

St. Joseph

Attendance 1; Football 1; Track 1; Basketball  
1; Intramurals 3, 4.

ARTHUR ROCKERS

St. Martin

Track 3; Intramurals 1, 2, 3, 4.

DAVID ROSNER

St. Peter

Attendance 2, 4; Intramurals 3, 4; Band 1, 2,  
3; Legion of Mary 3; Track Engineers 3.

WILLIAM ROST

Immaculate Conception

Class Officer 3, 4; Hi-Lites Staff 4; Senior  
Play 4; Honor Roll 2, 3; Intramurals 2, 3, 4;  
Track Engineers 3; Legion of Mary 3.

BETTY SCHELL

St. Thomas

Attendance 1; Good Counsel 1, 2, 3, 4; Choral  
Club 3; Class Officer 4; Intramurals 1, 2, 4;  
Civics 1.

GILBERT SCHELLMAN

St. Thomas

Attendance 1, 3; Intramurals 1, 2, 3, 4.





## SENIOR CLASS OF '59



DONALD SCHENEWERK

St. Martins

Intramurals 1, 2, 3, 4.



CAROL SUE SCHEPKER

St. Peter

Attendance 1, 2, 3; Good Counsel 1, 2, 3; In-  
tramurals 1; Civics Club 1.



PATRICIA SCHERR

Immaculate Conception

Attendance 1, 4; Good Counsel 1, 2, 3; Choral  
Club 2, 3; Intramurals 1; Pepettes 1, 2; Senior  
Play 4; Science Club 4; Latin Club 2; Civics  
Club 1.



JAMES SCHMITZ

St. Peter

Intramurals 1, 2; Track Engineer 3, 4.



LAWRENCE SCHRIMPF

St. Stanislaus

Attendance 1; Honor Roll 1, 2, 3; Intramurals  
1, 2, 3, 4.



GEORGE SCHULTE

St. Peter

Honor Roll 1; Intramurals 1, 2, 3, 4; Track  
Engineer 3.



ROBERT SCHULTE

Immaculate Conception

Attendance 1, 2, 4; Hi-Lites Staff 4; Honor  
Roll 1, 2, 3, 4; National Honor Society 4; In-  
tramurals 1, 2, 3, 4; Benildus Club 1; Student  
Manager 2; Boys' State 3; Legion of Mary  
3, 4.



DAVID SCHWALLER

St. Peter

Attendance 4; Honor Roll 1, 2, 3, 4; Track 1;  
Intramurals 1, 2, 3, 4; Legion of Mary 3; Track  
Engineer 3.

## SENIOR CLASS OF '59

MARILYN STROPE

St. Thomas

Attendance 1, 2, 3; Good Counsel 1, 2, 3, 4;  
Class Officer 1; Intramurals 1; Pepettes 2;  
Civics Club 1.



MARGARET STURM

St. Peter

Good Counsel 1, 2, 3; Choral Club 4; Pepettes  
1, 2, 3, 4; Band 2; Majorettes 1, 2, 3, 4; Civics  
Club 1; Latin Club 2.



ELIZABETH SUMMERS

St. Peter

Good Counsel 2, 3, 4; Choral Club 2, 3, 4;  
Pepettes 2, 4; Senior Play 4; Latin Club 2.

MARY JO SUTTNER

Immaculate Conception

Attendance 1, 3, 4; Good Counsel 1, 2, 3;  
Choral Club 4; Class Officer 1; Intramurals  
1, 3, 4; Pepettes 1, 2, 3, 4; Civics Club 1.



JAMES SWEARINGEN

Immaculate Conception

Attendance 2; Honor Roll 2; Intramurals 1, 2, 3.

VERNA LEE TELLMAN

Immaculate Conception

Attendance 1, 2, 3, 4; Good Counsel 1, 2, 3, 4;  
Choral Club 2, 3; Class Officer 1, 2; Intramu-  
rals 1, 2, 3, 4; Pepettes 1, 2, 3, 4; Senior Play  
4; Mary's Messenger 2; Student Council 3, 4;  
National Honor Society 3, 4; Cheerleader 2,  
3, 4; Yearbook Staff 4; Science Club 4; Ma-  
jorettes 1; Latin Club 2; Civics Club 1.



MARILYN VAN LOO

St. Stanislaus

Attendance 3; Good Counsel 1, 2; Intramurals  
1, 2, 3, 4.

JANE VOGEL

St. Peter

Good Counsel 1, 2, 3, 4; Class Officer 3; Hi-  
Lites Staff 4; Pepettes 1, 2, 3, 4; Senior Play  
4; Band 1, 2, 3, 4; Student Council 3, 4; At-  
tendant to Queen 4; Science Club 4; Intra-  
murals 3.

## SENIOR CLASS OF '59

DOLORES WAGNER

St. Peter

Good Counsel 1, 2, 3; Hi-Lites Staff 4; Pepettes 1, 2, 3; Band 2, 3, 4; Student Council 2, 3, 4; Science Club 4; Civics Club 1; Latin Club 2; National Honor Society 4.

NANCY WANSING

Immaculate Conception

Attendance 3, 4; Good Counsel 1, 2, 3, 4; Choral Club 1, 2, 3, 4; Intramurals 1, 2, 4; Student Council 2; Civics Club 1.

WM. THOMAS WISCH

St. Peter

Attendance 1; Hi-Lites Staff; Honor Roll 1; Football 1, 3; Track 3; Intramurals 1, 2, 3, 4; Benildus Club 1; Band 1; Legion of Mary 3, 4.

JO ANN WOLKEN

Immaculate Conception

Attendance 1, 2, 3, 4; Good Counsel 1, 2, 3, 4; Choral Club 2, 4; Class Officer 4; Intramurals 1, 2, 4; Pepettes 1, 2, 3, 4; Civics Club 1.

JERILYN WOLTERS

Immaculate Conception

Attendance 2; Good Counsel 1, 2, 3, 4; Choral Club 2; Class Officer 2, 3; Intramurals 1, 2, 4; Pepettes 1, 2, 3, 4; Senior Play 4; Civics Club 1.

GARY ZEILMAN

St. Peter

Attendance 4; Class Officer 3, 4; Hi-Lites Staff 1, 4; Honor Roll 1, 2; Basketball 1; Intramurals 1, 2, 3, 4; Benildus Club 1; Student Manager 3, 4; Band 1; Legion of Mary 3, 4.





## **JUNIOR CLASS PRESIDENTS**

From left to right: Pat Drinkard, Carl Pratt, Jerry Heislen, Ethel Steuber



ROOM 103

ROOM 204

TOP: Jerry Heislen, President; Tom Heisler, Vice President;  
Richard Bacon, Secretary; Don Howser, Treasurer.

BOTTOM: Pat Drinkard, President; Joan Luebbert, Vice President;  
Loraine Adrian, Secretary; Mary Helen Wilbers, Treasurer.

## JUNIOR CLASS OFFICERS

TOP: Carl Pratt, President; Doug Schellman, Vice President;  
Sidney Reedy, Secretary; Denny Magee, Treasurer.

BOTTOM: Ethel Stueber, President; Betty Lou Wolken, Vice  
President; Pat Bentlage, Secretary; Mary Ann Meller, Treasurer.

ROOM 104

ROOM 206



LOUISE ADRIAN  
 JAMES BECKER  
 ROBERT BECKER  
 BERNADINE BISGES



GEORGENE BISGES  
 GILBERT BISGES  
 DAVID BLUME  
 STEVE BODE



HENRIETTA BOESSEN  
 PATRICIA BOLTEN  
 JAMES BORGMEYER  
 MILTON BOSCH



MARILYN BRONDEL  
 BONNIE LEE BRUNE  
 LARRY BUSCHJOST  
 JEAN CADY



DON CHAPMAN  
 NORMAN CLARK  
 FRANCIS CORRIGAN  
 WILLIAM DAVIS



ROLAND DOERHOFF  
 NORMA DOUGLASS  
 DAVID DUDENHOEFFER  
 CAMILLA DULLE



BARBARA DWIGHT  
THOMAS EVELER  
ROGER EVERS  
CAROL FINDLAY



KATHY FOSTER  
DELORIS FRANK  
JOHN GENTGES  
LARRY GERLING



PAT GNAGI  
PATRICIA HACKMAN  
DAVID HEMMEL  
RUTHIE HEMMEL

SUE HEMMEL  
DAVID HENTGES  
CHARLES HITZ  
NICK HOHENSTREET



BARBARA HOLZER  
DON HUBER  
PAT HUHMANN  
LONNIE IRVIN



CARLEAN JENKINS  
CHARLES KEMNA  
HARVEY KEMPER  
DIANE KEMPKER



KENNETH KIRCHNER  
 LARRY KLIEGEL  
 BARBARA KLIETHERMES  
 BERTA LOU KOESTER



KATHY KOENIG  
 KITTY KROLICK  
 PATRICIA KUEBLER  
 STEPHANA LANDWEHR



MARJORIE LAUF  
 PERRY LESLIE  
 JUDY LIBBERT  
 SHIRLEY LÄNNENBRINK



MAUREEN LUCCI  
 PHIL LUEBBERT  
 CAROL McILWAINE  
 GARY McKINNEY



MIKE MEISTER  
 CHARLES MERTENS  
 DONNA KAY MEYER  
 GLENDA ANN MORFF



JEANNE NEUMANN  
 RICHARD NEUTZLER  
 JAMES OIDTMAN  
 M. FRANCES PICKERT





RONALD PLASSMEYER  
 JOHN POEPEL  
 LARRY POETKER  
 MELVIN POETKER



AUDREY PONDER  
 BEVERLY PRENGER  
 KENNETH PRENGER  
 MARY ELLEN PRENGER



MICHELE SUE RACKERS  
 ROBERT RACKERS  
 MARVIN REGISTER  
 JOHN REMICK

JOHN RENN  
 TOM RILEY  
 FRED ROST  
 WILLIAM SCHAEFFER



SHIRLEY SCHEPERS  
 BARBARA SCHEPKER  
 DONNA SCHEPKER  
 GENE SCHEPKER



GEORGIA SCHEPPERS  
 JUDY SCHERER  
 ALFRED SCHMIDT  
 RUTH SCHNIEDERS



VIRGINIA SCHROER  
 DOROTHY SCHULTE  
 MARY ANN SCHULTE  
 MARY LYNNE SCHULTE



PAULINE SCHWARTZ  
 VERNON SELLMAYER  
 VIRGINIA STROPE  
 GLADYS VEIT



CAROLE J. VINCENT  
 IRMA VIVION  
 CAROLE VOGEL  
 MARY LESLEY VOGEL



LEO VOSS  
 JOHN WANSING  
 STEVE WELCH  
 HAROLD WESSELMANN



JOSEPH WIEBERG  
 WILLIAM WILBERS  
 BONNIE WILLIBRAND  
 EMILY WOLTERS



LINDA WILLIAMS  
 JACQUELINE ZEILMAN



## SOPHOMORE CLASS PRESIDENTS

From left to right: Janet Wolters, Carol Frank,  
George Heisler, Larry Rademan.

ROOM 106



ROOM 202



TOP: Larry Radamen, President; Julien Ossman, Vice President;  
Robert Thrash, Secretary; James Poepsel, Treasurer.

BOTTOM: Janet Wolters, President; Patty Stokes, Vice President;  
Rosemary Struttman; Secretary; Judy Prenger, Treasurer.

## SOPHOMORE CLASS OFFICERS

TOP: George Heisler, President; Phil Kaiser, Vice President; Leon  
DeLassus, Secretary; Robert Fennewald, Treasurer.

BOTTOM: Carol Frank, President; Vera Sue Evers, Vice President;  
Theresa Schmitz, Secretary; Melinda Balkenbusch, Treasurer.



ROOM 107



ROOM 207



Paris Amend  
Margaret Angenerdt  
Victor Bentlage  
Harold Bernskoetter



Denis Bisges  
Alberta Boeckman  
David Boessen  
Jane Bonnot



Joseph Bosch  
Helen Brandt  
Anne Bredeman  
Stephen Brethorst

Louise Brown  
Rose Mary Butler  
Thomas Caspari  
Barbara Castaldi



Margaret Champlain  
Donald Clark  
Franklin Distler  
Joseph Duenkel



Jeane Dulle  
John Dulle  
Roger Dunn  
Judy Dunnivant



Lawrence Eberlin  
 Judy Eckerle  
 Janet Eddy  
 Leon Eichholtz



Jane Franken  
 Donald Gerling  
 Charles Haaf  
 Frank Haar



Mary Alice Haar  
 Thomas Hake  
 David Hamacher  
 Helen Hartman



Leonard Heimericks  
 Sharon Henson  
 James Hentges  
 Robert Hentges



Loretta Hoelscher  
 Lucille Hoelscher  
 Janet Hood  
 Dennis Kaiser



Mary Jo Kemna  
 Audrey Kliethermes  
 Dolores Kliethermes  
 Ronald Kliethermes



James Kolb  
 Judy Kremer  
 Ruth Kroll  
 Earl Langkop



John Laux  
 Allan Lepper  
 Kathy Loehner  
 Joseph Leothern



Agnes Luebbering  
 Eleanor Luebbering  
 Mary Lueckenhoff  
 Marilyn Luebbert

Joyce Lynes  
 Mary E. Mehmert  
 Carole Ann Mertens  
 Clarissa Mickevicius



Wayne Miller  
 Judy Moore  
 Dan Morff  
 Lawrence Muessig



Robert Mullen  
 Lee Murphy  
 Laura A. Natsch  
 Carol Neumann



William Nevins  
 William Norfleet  
 James Ortmeyer  
 Judy Paschal



Jo Ann Pirner  
 Albert Rackers  
 Patrick Rackers  
 Patsy Rackers



Phyllis Rackers  
 Robert Rackers  
 Jo Ann Rademan  
 Anne Rambo



Barbara Reichart  
 Sally Remick  
 Anna Marie Renn  
 Ann Riley



Don Roark  
 Donald Robinson  
 Linda Schepers  
 Gale Schleer



Roger Schmidt  
 Henry Schmitz  
 Thomas Schnieders  
 Edward Schulte





Irene Shelley  
 Anthony Siebeneck  
 Robert D. Smith  
 Judy Spillers

Donna Stockman  
 Mary Grace Stokes  
 Jerome Struempf  
 Rosalie Talken

Edward Tremain  
 Joyce A Trippensee  
 Meredyth Wallau  
 Leona Welch



Betty Welschmeyer  
 Mildred Werdehausn  
 John Wesselmann  
 Anna Marie Wilbers



Jerry Wilbers  
 Mary Joan Wilson  
 Jerome Kauffman  
 John Zeilman





## FRESHMAN CLASS PRESIDENTS

From front to back: Dorothy Dallas, Mary Plassmeyer,  
Thomas De Broeck, Jim Barry.



ROOM 108



ROOM 208

TOP: Jim Barry, President; Bob Leslie, Vice President; Tom Bacon, Secretary; Steve Schepkers, Treasurer.

BOTTOM: Mary Plassmeyer, President; Ruth Ellen Williams, Vice President; Sue Fritsch, Secretary; Linda Kolb, Treasurer.

## FRESHMAN CLASS OFFICERS

TOP: Thomas De Broeck, President; Charles Kaiser, Vice President; George Zaring, Secretary; William Morff, Treasurer.

BOTTOM: Dorothy Dallas, President; Dee Lynne Schulte, Vice President; Susan Rieke, Secretary; Geraldine Obermark, Treasurer.

ROOM 107



ROOM 203



Mary Baumann  
 Loretta Bemboom  
 Gerald Benne  
 Janet Berendzen



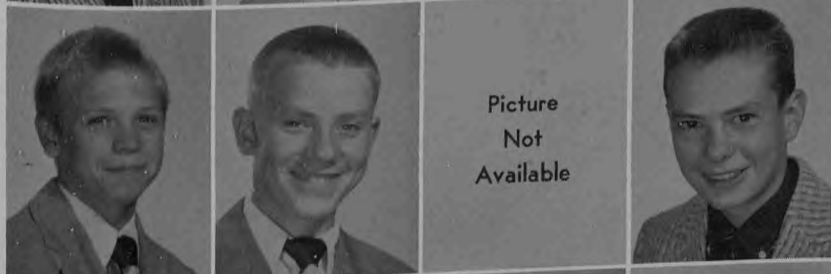
Karen Bernskoetter  
 Henrietta Bisges  
 Loretta Bisges  
 James Bode



Robert Boeckman  
 Allaine Boessen  
 Allan Boessen  
 Daniel Borgmeyer



William Borgmeyer  
 Donna Coffelt  
 Danna Coppin  
 Michael Corrigan



Delbert Distler  
 Sylvester Distler  
 Jane Dore  
 Richard Dudenhoeffer



Mark Dulle  
 Judy Fechtel  
 Kay Fechtel  
 Ralph Dulle



Beverly Fifer  
 Mary Fischer  
 James Foster  
 Linda Frank

Mary Frank  
 William Gerling  
 Harold Goedde  
 Alma Hagenhoff

James Hagner  
 Evonda Hart  
 George Hays  
 Vinnie Hauser

William Heil  
 Jane Heimericks  
 Vernon Hemmel  
 Shirley Kliegel

Marguerite Hentges  
 Lynn Hilkemeyer  
 Victoria Hilkemeyer  
 Dorothy Hood

Raymond Kauffman  
 Rita Kauffman  
 Thomas Kauffman  
 James Keller



Grace Kliethermes  
 Pauline Kliethermes  
 Michael Klug  
 Lucy Ann Kroll



Kenneth Kuebler  
 William Landwehr  
 James Laux  
 Francis Luebbert



Glenda McKinney  
 Mary Alice Menges  
 Mary Sue Mertens  
 Carole Meyer



David Lee Morff  
 Phyllis Mueller  
 Leonard Muenks  
 Patsy Natsch

David Neutzler  
 Jane Neutzler  
 Barbara Otto  
 Sandra Ortmeyer

Jerome Parris  
 Shirley Parris  
 Robert Parish  
 Carolyn Patterson



Marilyn Poetker  
James Pohl  
James Prenger  
Martha Preuss



Fred Rackers  
Elnora Randazzo  
Paul Reeves  
John Rephlo



Marcella Rockers  
Marilyn Rose  
Barbara Rosner  
Marilyn Schaeffer

James Schatzer  
Linda Schell  
Shirley Schellman  
Larry Schenewerk



Jean Schepard  
Larry Scheppers  
August Scheppers  
Marydeth Sheppers



Diane Schmitz  
Sue Schreiman  
Judy Schrimpf  
Nancy Schulte



Rosaline Schulte  
 John Schulte  
 Lorna Scott



Robert Scruggs  
 Ann Shockley  
 Joan Steuber



John Summers  
 John Sundermeyer  
 Susan Szigety



Betty Talken  
 Patricia Taylor  
 Jerry Tellman  
 Mary Helen Stokes



Jolyne Toebben  
 David Vanderfeltz  
 David Vaughn  
 Stanley Veit



Carolyn Slicker  
 Rosemary Voracek  
 Leo Wickers  
 Larry Williams





Forces at work in classes



Father John Vereb instructs senior girls in the truths of their faith.

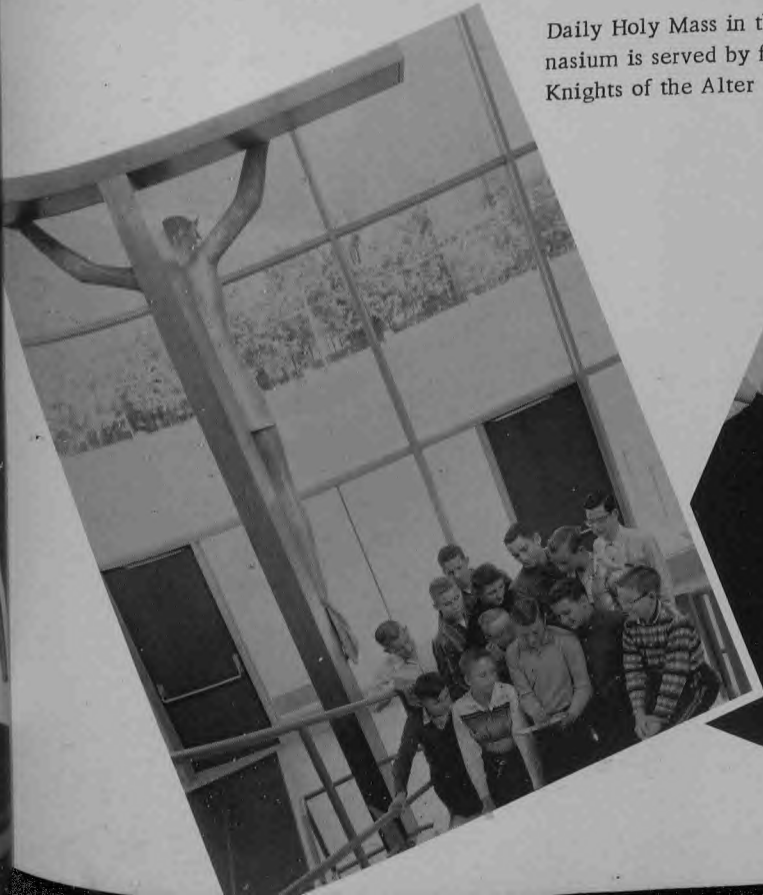
Helias boys form an active Legion of Mary unit and meet weekly.



## RELIGION

Our Lady of Good Counsel Club draws many Helias girls into its membership. Its purpose is to study life's various vocations.

Daily Holy Mass in the gymnasium is served by faithful Knights of the Alter



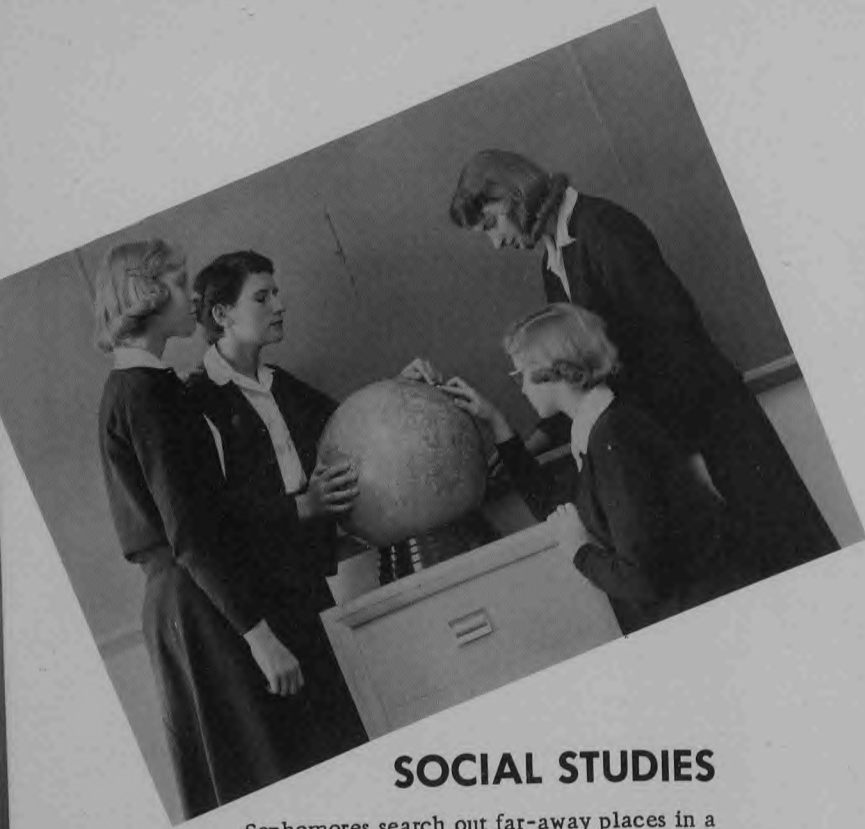
## LATIN

Comics take on an added fascination when read in ye ancient Latin tongue.



## SOCIAL STUDIES

Sophomores search out far-away places in a world history class.



## LIBRARY

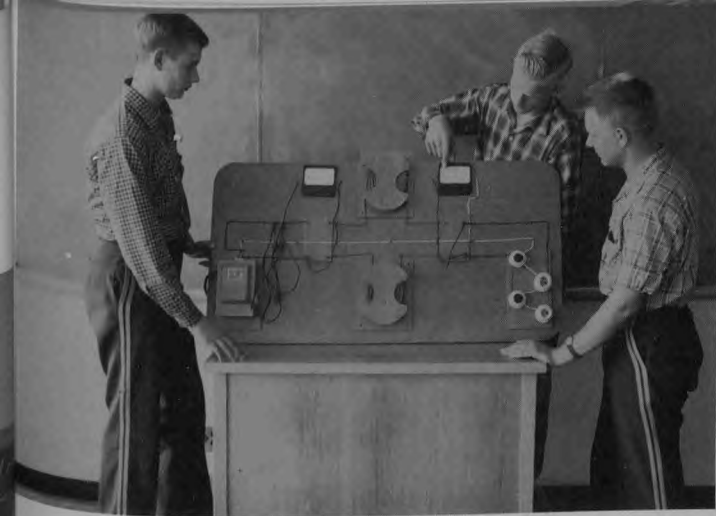


The Helias Library opens up to its students a wealth of information.

## ENGLISH

Classic selections from English literature help to develop a fine sense of literary appreciation.

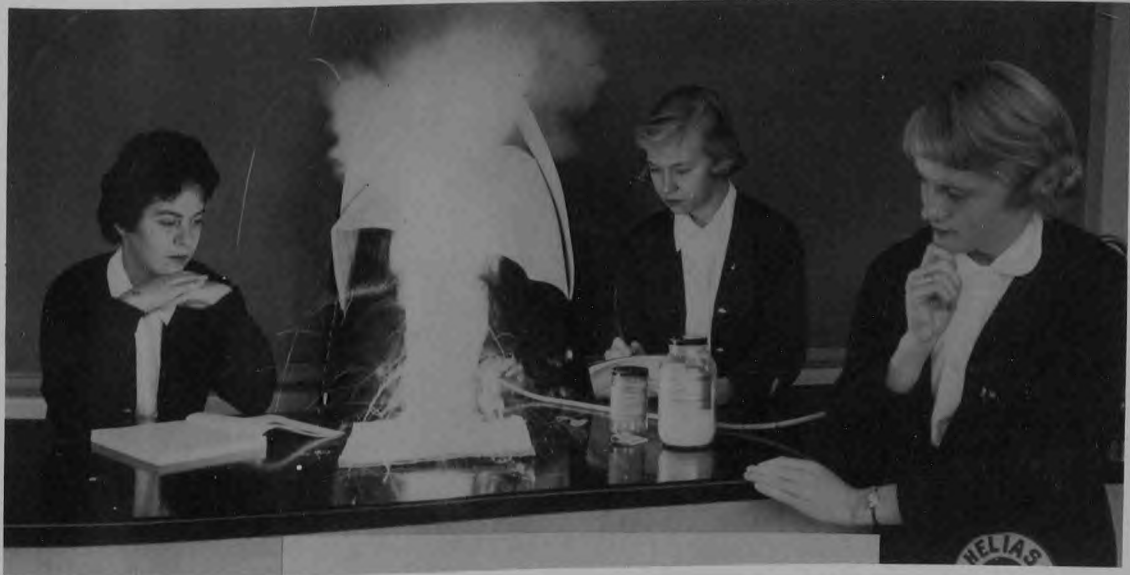




Will it work?



So much to do and see!



This intrigues me no end!

## SCIENCE AND MATH

This is the point in question.



Pleased to meet you, pet!



Intent on training for the job.

## SECRETARIAL SCIENCE



Efficiency is our aim.

## SPEECH



Young America speaks.

Education comes alive on a sound track.



Nothin' says lovin' like somethin' from the oven.



## HOME ECONOMICS

A dress in the dream stage.



## SHOP

Live electrically.



A boy, a block of wood, and power machine.





# ACTIVITIES

Forces at work on personality



## STUDENT COUNCIL



President Jane Vogel, Vice President Evelyn Rackers, Secretary Jeanne Hiesberger, and Treasurer VernaLee Tellman lay plans for the scholastic year of '58-'59.

Outstanding in their projects for the year was the sponsoring of a courtesy campaign.

Jeanne Hiesberger (right) was chosen as Miss Courtesy of Helias High.







## HELIAS MAJORETTES

These girls march jauntily before the school band.



## HELIAS DRILL TEAM



Helias Band  
directed  
by  
MR. JAMES ROGERS





**MADRIGAL GROUP**

Ruth Kroll, Jaci Zeilman, Georgene Bisges, Mary Ann Meller, Jeanne Hiesberger, Maureen Lucci, Judy Prenger, Marilyn Strobe, Camilla Dulle.



**GIRLS'  
CHORUS**

under

direction of

**SISTER MARIE PAUL**

Choral Group singing

**TRIPLE TRIO**

Sue Schreiman, Elnora Randazzo, Linda Schell, Rosaline Schulte, Rosemary Voracek, Donna Cofelt, Linda Frank, Janet Berendzen, Martha Preuss.





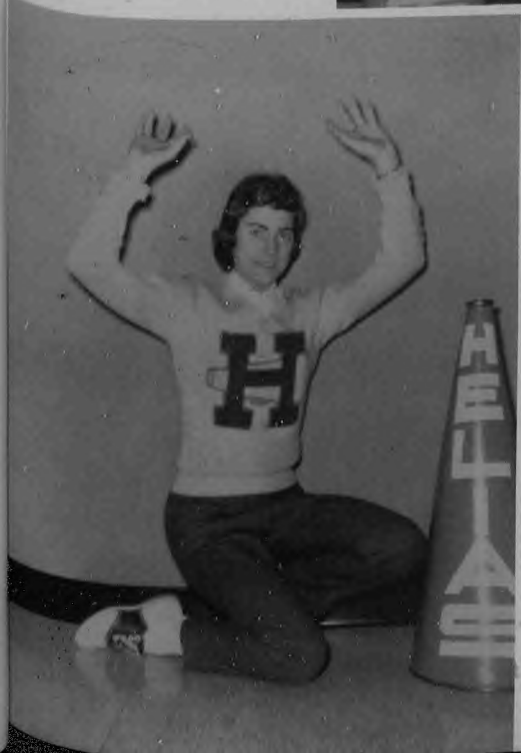
HELIAS PEPETTES OFFICERS: President, Ann Hall; Vice President, Jeanne Hiesberger; Secretary, Berta Lou Koester; Treasurer, Mary Leslie Vogel; Sergeants-at-Arms, Sally Remick, Kathy Loehner.

SENIOR CHEERLEADERS

Lynn Rose Hager



Verna Lee Tellman

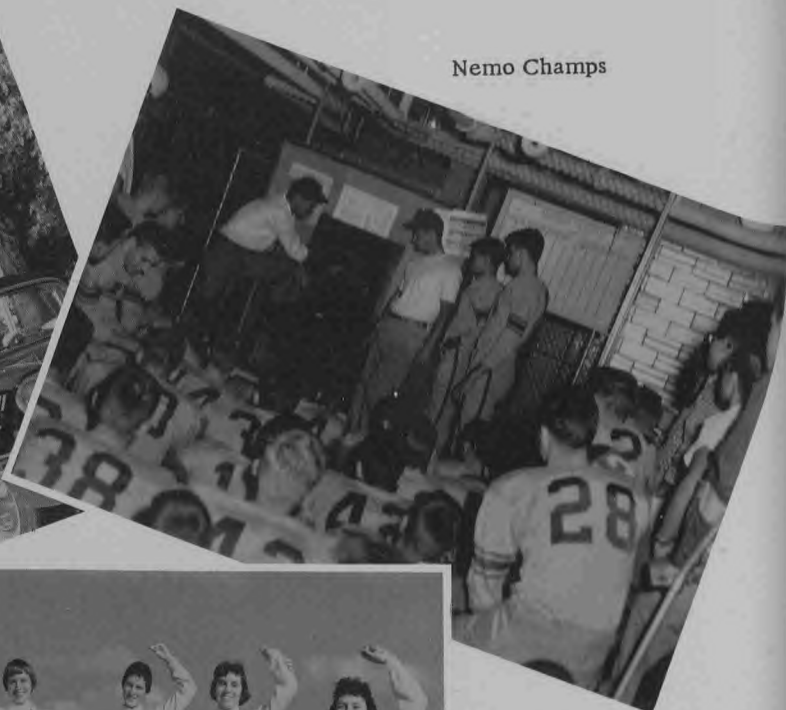


# HOMECOMING DAY

Winner - first place



Nemo Champs



Generating



the pep

Hero's inspiration



Winner - second place



**CRUSADER QUEEN**

ANN HALL



DONNA BUERSMEYER



LYNN ROSE HAGER



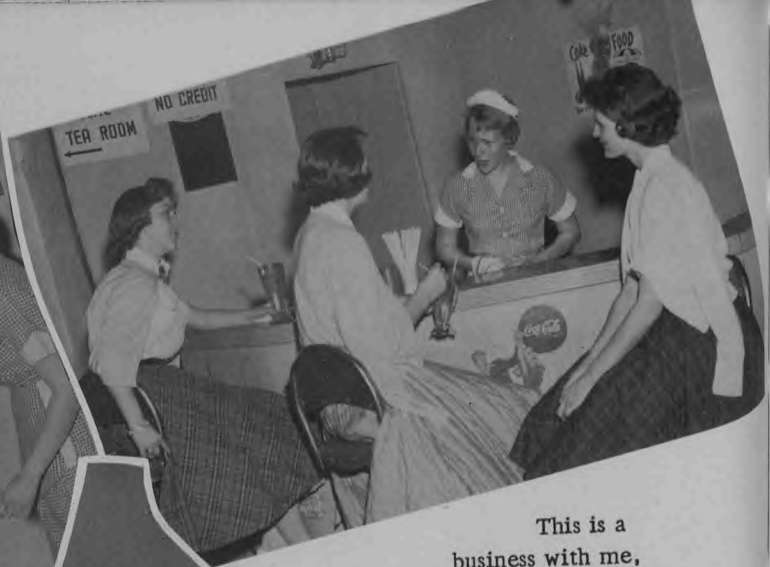
EVELYN RACKERS

**FOOTBALL  
ROYALTY**



JANE VOGEL

Gosh! didn't you know?



This is a business with me, not a hobby!



Perhaps I have been a bit hasty!

1959

SENIOR PLAY

I'm in love - with you, I mean!





**“LOVE  
IS TOO  
MUCH TROUBLE”**

And I  
mean I really would!



Okay, think your way out of this!



The first time I saw Joe.





## SCHOOL PUBLICATIONS

Vernalee Tellman together with Co-editors Evelyn Rackers and Betty Ann Markway get yearbook pages off to press.



Pat Hartman, Charlene Frank, and Ruth Ann Prenger plan page layouts for the '59 Crusader.

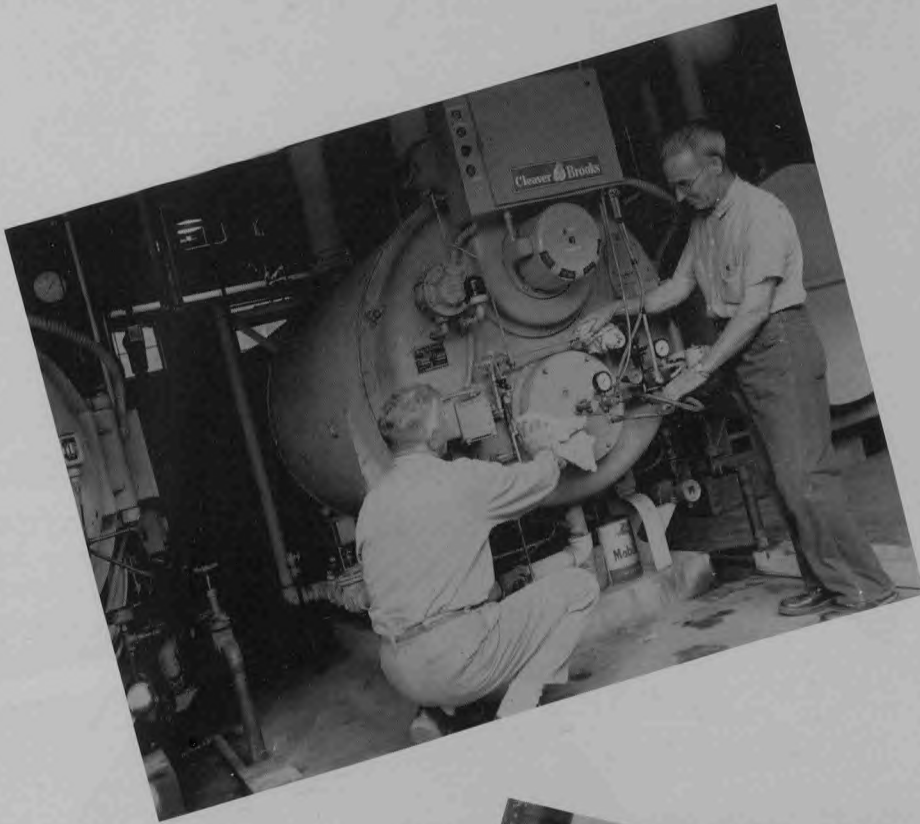
## YEARBOOK STAFF



These girls and boys are the power behind your Hi-Lites issues. Reading from left to right: Donna Buersmeyer, Dolores Wagner and Dorothy Patterson, Larry Gnagi, Chuck Schulte, Jim De Long, and Joe Hemmel.

## HI-LITES STAFF





## MAINTENANCE

Keeping the physical plant clean, orderly, and smoothly run is the concern of Mr. Joseph Rehagen (left) and Mr. George Maasen (right).

## CAFETERIA

Mrs. Henry Feind (top) and Mrs. Joseph Rehagen (bottom) serve wholesome lunches with a cheery word and a happy smile.



# JUNIOR-SENIOR PROM



'Twas a wonderful night for dancing,  
The stars were shining in my eyes,  
For everyone to see.

## STAIRWAY TO THE STARS

"Catch a Falling Star"



"Memories are Made of This"





**BOTTOM ROW:** Mary Ann Healey, Verna Lee Tellman, Evelyn Rackers, Larry Gnagi, Joe Hemmel, Ruben Luebbering, Robert Schulte. **SECOND ROW:** Stephana Landwehr, Donna Buersmeyer, Linda Scott, Tom Heisler, Ralph Voss, Sidney Reedy. **THIRD ROW:** Diane Kempker, Joan Bruegging, Charlene Frank, Dolores Wagner, Ronald Prenger, William Hentges, Tom Parris.

## HELIAS CHAPTER NATIONAL HONOR SOCIETY



Senior, Verna Lee Tellman, and Junior, Sidney Reedy, show National Honor Certificates to their parents.



PAT CONNOR  
English



LINDA SCOTT  
Honor Student  
Commercial



**SCHOLASTIC**

**HONORS**



RUTH ANN PRENGER  
Science



JANET ROBINETT  
Citizenship



JANE VOGEL  
Social Studies



JEANNE HIESBERGER  
Choral



MARGIE STURM  
Home Economics

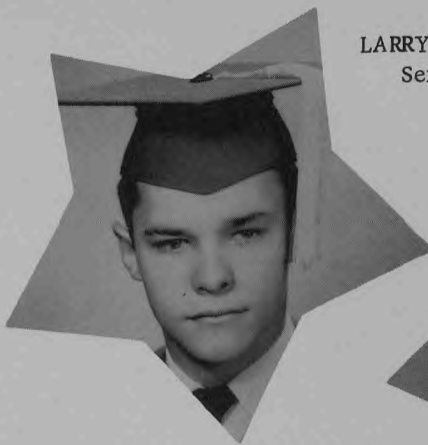


DARLENE HEISLEN  
Physical Education

KENNETH OIDTMAN  
Service



LARRY GNAGI  
Service

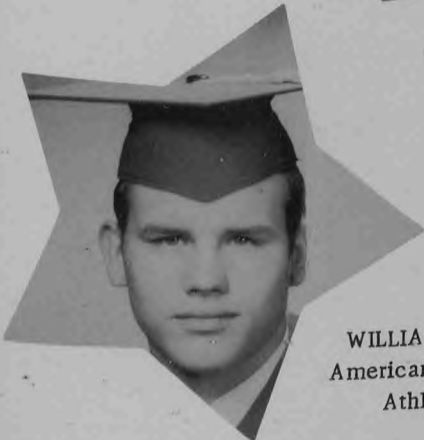


TOM PARRIS  
Veteran Foreign Wars Award

BOB SCHULTE  
Scholarship  
Science



## AWARDS DAY



WILLIAM HENTGES  
American Legion Medal  
Athletic Ring



JOE HEMMEL  
All-Round  
Student  
Mechanical Drafting

## SCHOLASTIC HONORS

RUEBEN LUEBBERING  
Commercial  
Exchange National Bank Award



MIKE DORGE  
Improved Scholarship  
Award



David Schwaller



Joann Wolken



Betty Ann Markway



James Landwehr



RELIGION AWARDS

HONORS



BANK AWARDS, left to right: Mary Helen Stokes, Sharon Hensen, Georgine Bisges, Marilyn Champlain, Dolores Wagner.

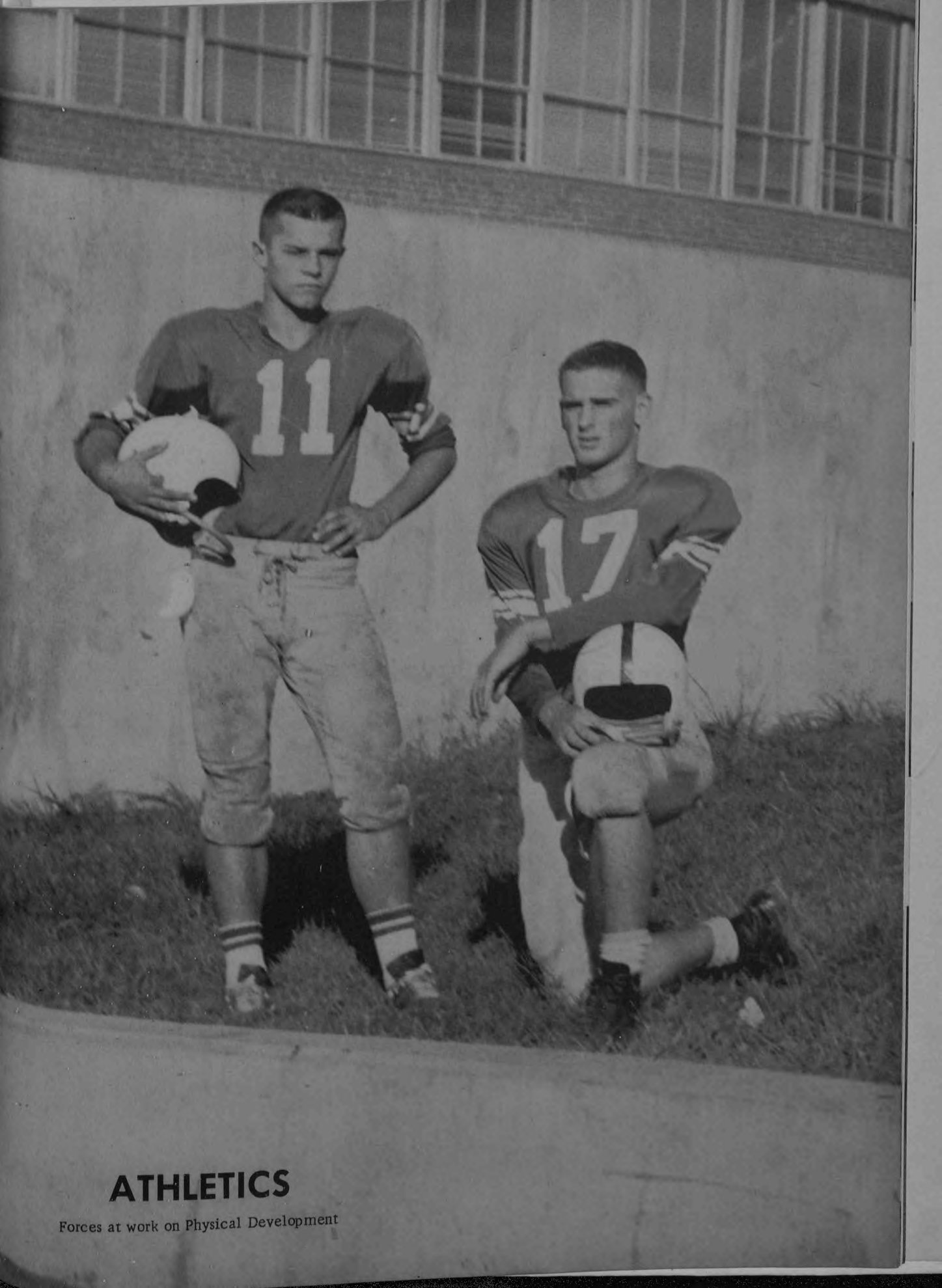
FUTURE

AIR FORCE ACADEMY CADETS

Joseph Hemmel - William Hentges



BAND AWARDS, left to right: Carol Hays, Joan Bruegging.



# ATHLETICS

Forces at work on Physical Development



## 1958 N.E.M.O. CONFERENCE FOOTBALL CHAMPIONS



### VARSITY

Coach Rackers, R. Bacon, M. Register, K. Oidtman, F. Rost, J. Hemmel, R. Voss, T. Kremer, B. Mankin, Coach Schnieders. ROW TWO: Mgr. D. Dulle, J. Nevins, T. Heisler, D. H mmel, C. Hitz, D. Hamacher, G. Heisler, J. Ossman, L. DeLassus, L. Gnagi, Mgr. D. Loehner. ROW THREE: Mgr. G. Zeilman, D. Hentges, C. Luebbert, J. Heislen, B. Hentges, J. Becker, B. Huber, J. Wieberg, A. Schmidt, B. Forck, P. Kaiser. ROW FOUR: S. Bode, C. Pratt, B. Schaeffer, D. Howser, J. Dulle, D. Huber, J. Kolb, L. Irvin, B. Hentges, R. Prenger, Athletic Director, Brother Timothy.

#### VARSITY SEASON RECORD

20	Houston	7
28	Mexico	7
12	Moberly	7
41	Boonville	0
28	Kemper	7
47	Douglas	0
26	Fulton	0
47	M. S. D.	7
23	Centralia	0



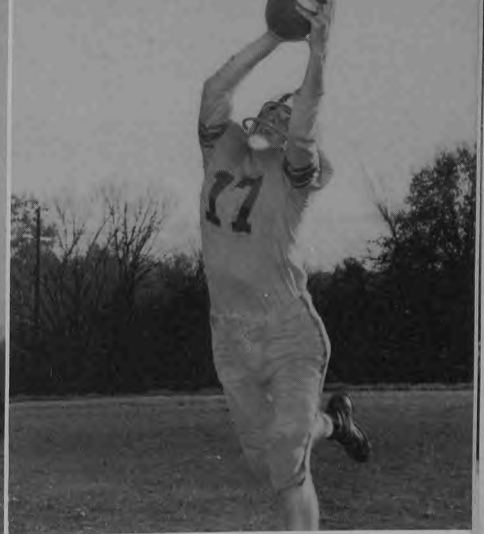
Ken Oidtman tackles Harry Hagner



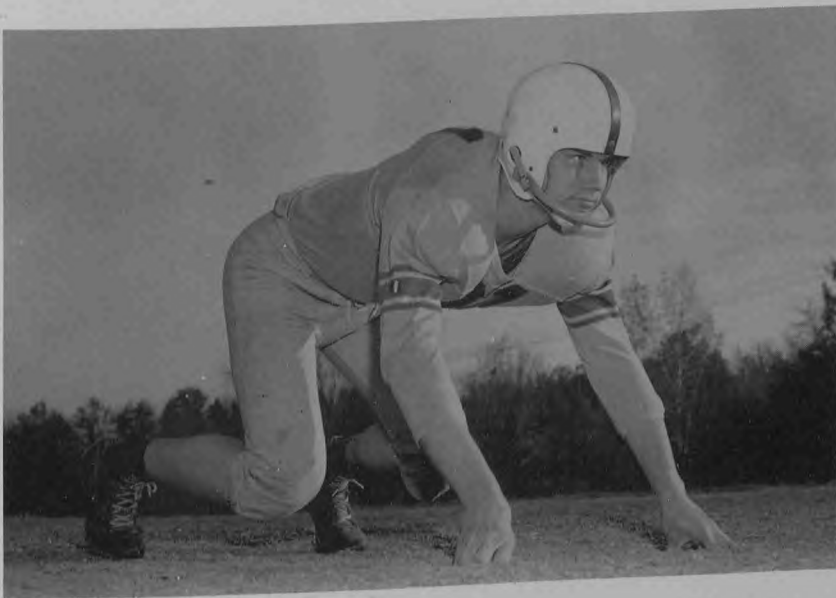
BEN MANKIN



JIM NEVINS



RONNIE PRENGER



**1958  
CRUSADERS  
IN ACTION**

BILL HENTGES

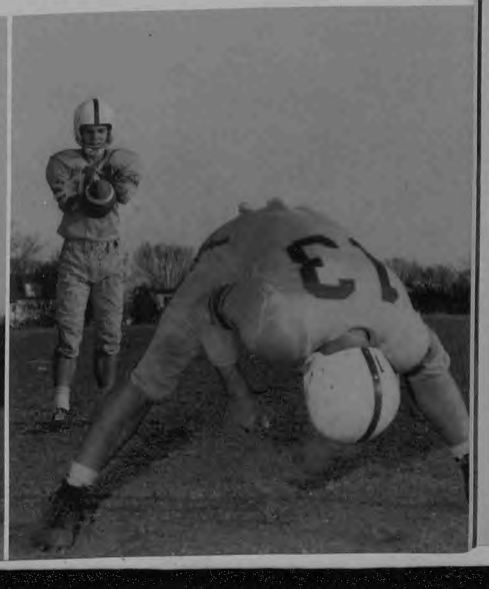
JOE HEMMEL

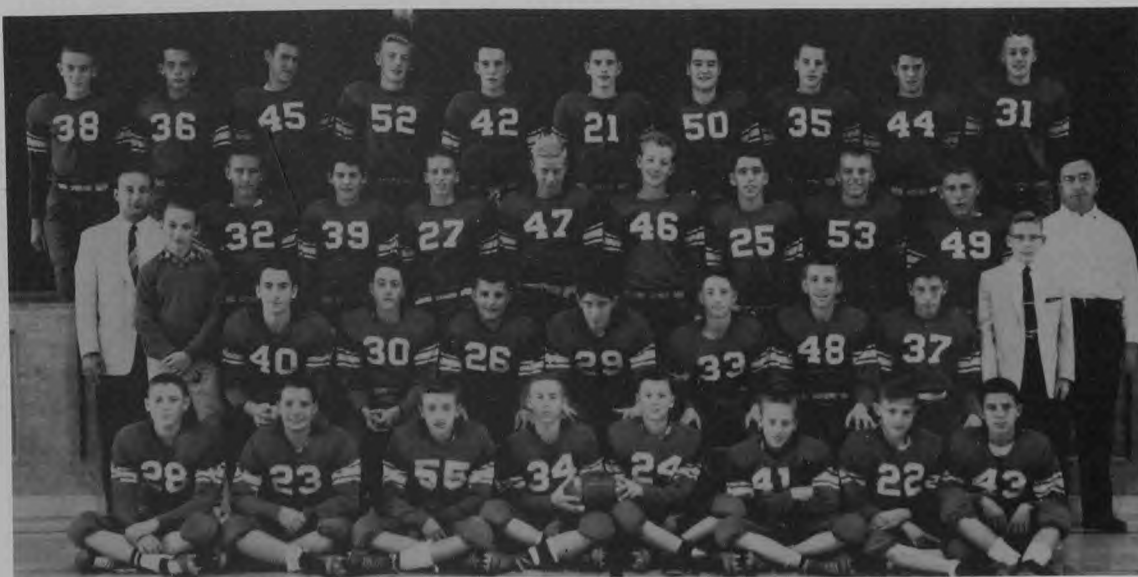


BUDDY FORCK



LARRY GNAGI    KEN OIDTMAN

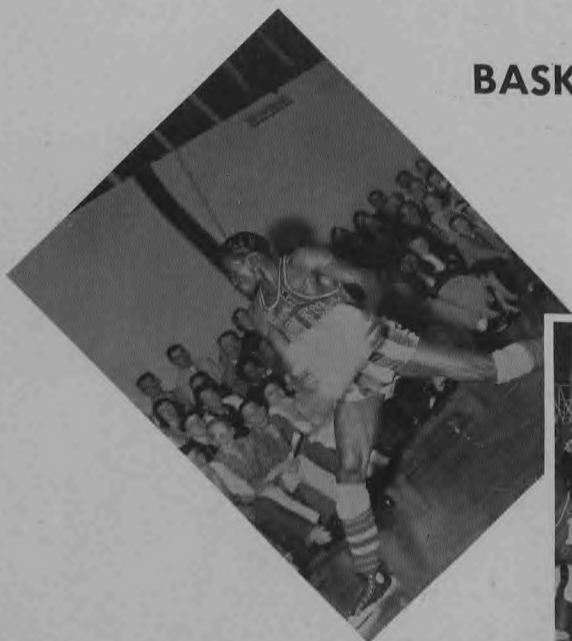




## FROSH-SOPH FOOTBALL SQUAD

FIRST ROW: Robert Thrash, David Neutzler, William Borgemeyer, Mark Dulle, Jerry Tellman, Gus Scheppers, Robert Scruggs, Thomas Caspari. SECOND ROW: James Barry, Larry Williams, Thomas Bacon, Thomas Schnieders, Stephen Schpeker, Larry Schepers, Larry Schenewerk. THIRD ROW: Mr. Ed Schaffer, Coach, Fred Rackers, Manager, Charles Kaiser, Allan Boessen, James Laux, Dave Boessen, Jerry Paris, Vernon Hemmel, Lee Murphy, John Sundermeyer, John Rephlo, Manager, Brother Edward, Coach. FOURTH ROW: Dave Vanderfeltz, Thomas DeBroeck, Jerry Wilbers, John Dulie, Joe Loethen, Joe Duenkel, Dwayne Smith, Donald Robinson, Robert Leslie, Francis Luebbert.

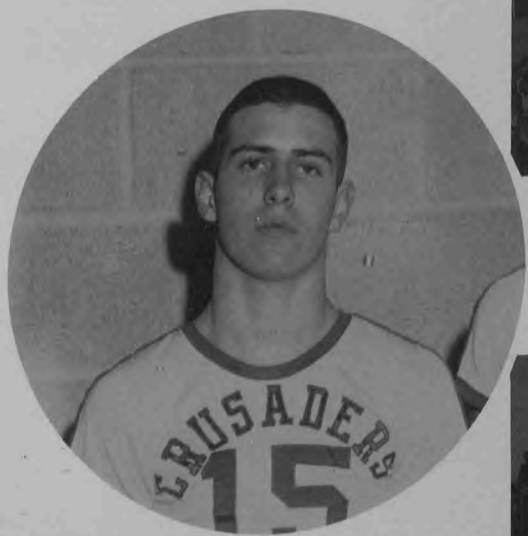
## BASKETBALL'S FAMOUS HARLEM GLOBETROTTERS





### BASKETBALL SEASON RECORD

60	Sacred Heart	49
Centralia Tournament - 2nd place		
46	Fulton	50
73	M. S. D.	54
53	Eugene	49
44	Alumni	48
52	Kemper	37
56	Boonville	50
55	Moberly	35
64	Kemper	33



### N.E.M.O. CHAMPS 1959



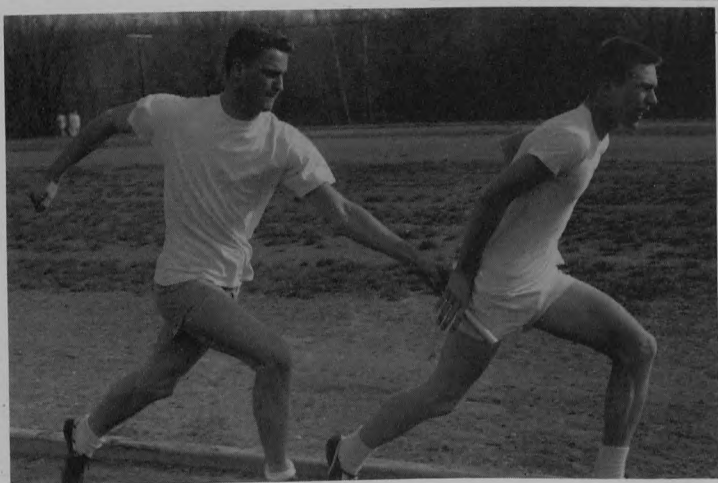
57	Centralia	52
67	Linn	55
54	M. M. A.	39
71	Boonville	47
66	Centralia	48
59	Moberly	38
61	M. M. A.	47

Fulton Tournament

Regional Tournament - 2nd place

Won 19

Lost 5



## **N.E.M.O. CONFERENCE GOLF CHAMPIONS**

**COACH:** Dr. J. Paul Leslie

**TEAM:** James Landwehr  
Tommy Heisler  
Bob Leslie  
Perry Leslie  
Melvin Poetker  
Fred Rost  
Steve Schepker



Modern Dance

## GIRLS'



PHYLLIS MERTA  
Practice Teacher  
Lincoln University



MRS. WILLIAM PARKHURST  
Gym Teacher

## GYM CLASS

Juniors take aim



Proud and Happy!



**THIS CHAPTER**

**OF**

**YOUR LIFE**



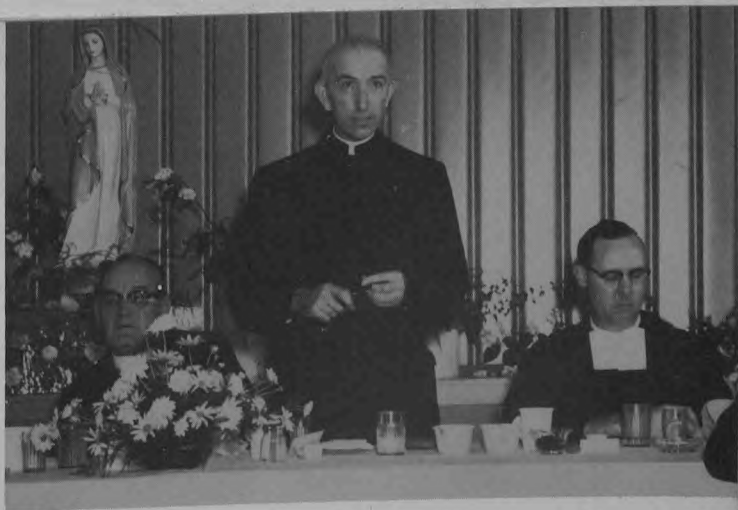
Schoolgirls  
no longer!

Eager to claim that diploma.



Singing the Graduation Mass.

From this point. . . where?



You are now young adults.

ENDS ON

# GRADUATION DAY

Promenade.



Shall we go on to higher studies?



Just waiting and talking.