

# DIRECTORY

OF THE

# CITY OF JEFFERSON

INCLUDING

## COLE COUNTY

1897-8.

---

---

EMBRACING A LIST OF ALL PUBLIC AND PRIVATE CITIZENS, THEIR OCCUPATIONS,  
WITH POST OFFICE AND RESIDENCE ADDRESS—COMPLETE BUSINESS  
DIRECTORY OF THE CITY AND COUNTY—MISCELLANEOUS  
DIRECTORY OF THE STATE, CITY AND COUNTY.

---

---

COMPILED AND PUBLISHED BY

RAITHEL & MURPHY.

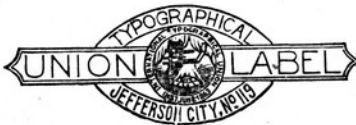
---

---

PRICE ONE DOLLAR.

---

---



JEFFERSON CITY:

TRIBUNE PRINTING COMPANY, STATE PRINTERS AND BINDERS

1897.

# Buehrle Bros.

MOST FASHIONABLE

## Barber Shop IN THE CITY.

Ladies' and Children's Hair Dressing and Shampooing a Specialty. Calls promptly attended to.

205 EAST HIGH STREET,

Jefferson City, - - - - Missouri.



August Kern, Agent,  
Barbers' Supply Co.,  
St. Louis.



Telephone 103.

## E. J. MILLER,

Agent for the

Anheuser-Busch Brewing Ass'n,

THE LEADING BREWERY IN THE WORLD

Brewers of the Most Wholesome and Popular Beers.

The Faust. Original Budweiser,  
The Pale Lager, The "Malt-Nutrine."

Served on all Pullman Dining and Buffet Cars. Served on all Wagner Dining and Buffet Cars. Served on Ocean and Lake Steamers. Served in all First-class Hotels. Served in the Best Families. Served in all Fine Clubs.

## VICTOR ZUBER,

PROPRIETOR OF

# Marble AND Granite Works

306-308 Jefferson Street.

Adjoining Merchants' Bank Building.

Jefferson City, - - - - Missouri.

# Jefferson City Bridge and Transit Company

FRED. H. BINDER, President.  
 O. H. MANCHESTER, Secretary.  
 A. P. GRIMSHAW, General Superintendent.

J. C. FISCHER, Vice President.  
 JESSE W. HENRY, Treasurer.

## DIRECTORS.

Fred H. Binder,	J. C. Fisher,
O. H. Manchester,	Jesse W. Henry,
Chas. E. Hess,	R. Dallmeyer.
J. P. Porth,	Henry J. Dulle,
W. W. Wagner,	George J. Vaughan,
	L. D. Gordon.

## TOLL RATES.

	ONE WAY.	ROUND TRIP.
Foot passenger . . . . .	\$ .05	
Foot passenger, children under 12 years . . . . .	.03	
Bicycle rider, single . . . . .	.05	
Bicycle rider, tandem . . . . .	.10	
Horse and rider . . . . .	.15	\$ .25
Horses, mules and cattle, per head . . . . .	.10	
Hogs and sheep, per head. . . . .	.05	
Threshing machine . . . . .	3.00	
Portable engine, drawn by horses, smooth wheels . . . . .	3.50	
Traction engine, subject to rules . . . . .	10.00	
Vehicles drawn by one horse, including 2 persons . . . . .	.25	.35
Vehicles drawn by 2 horses, including 2 persons . . . . .	.35	.50
Vehicles drawn by 4 horses, including 2 persons . . . . .	.50	.75
Vehicles drawn by 6 horses, including 2 persons . . . . .	.75	1.00
Each additional person in vehicle . . . . .	.05	.10

Time limit on round-trip tickets expire one day after their issue.

## SPECIAL SUNDAY RATES.

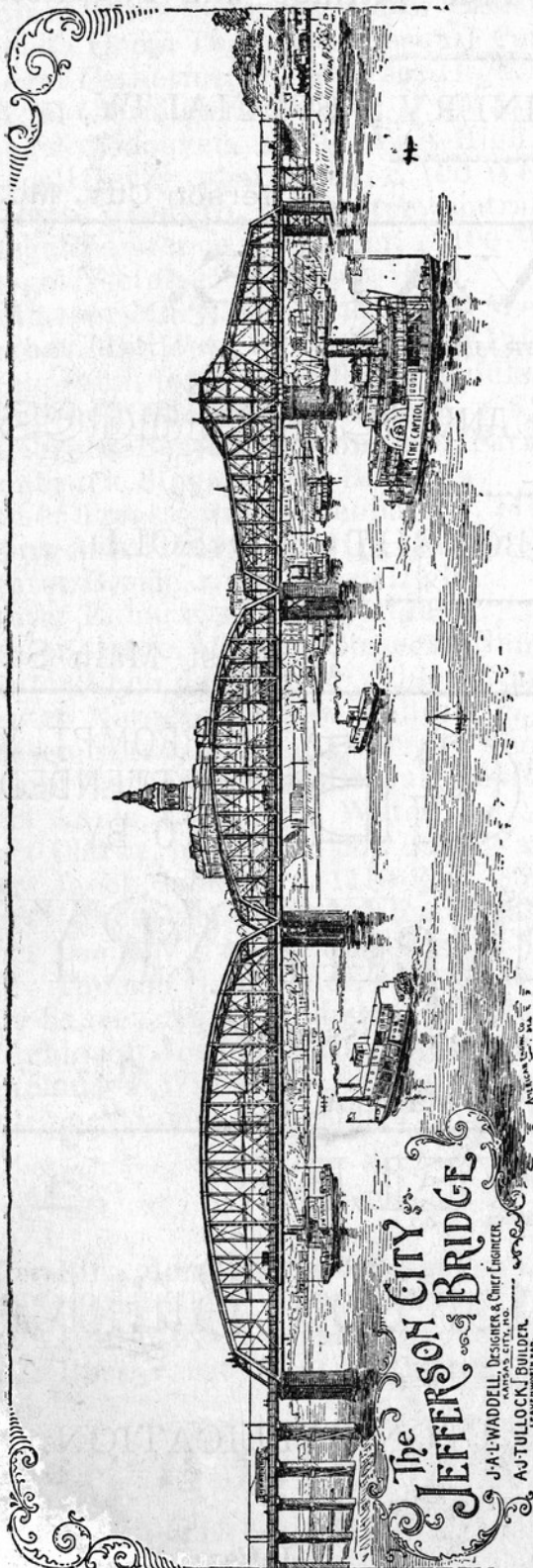
Return Ticket Good on Day of Issue Only.

	ROUND TRIP.
Horse and rider . . . . .	\$ .15
Pleasure vehicles drawn by 1 horse, including 2 persons . . . . .	.20
Pleasure vehicles drawn by 2 horses, including 2 persons . . . . .	.25
Each additional person in vehicle . . . . .	.05
Foot passenger . . . . .	.05

**RULES:** Traction engines can cross bridge only between the hours of 11 o'clock p. m. and 5 o'clock a. m. While crossing bridge they must be under supervision of Bridge Tollman or Watchman. One-inch planks must be placed under wheels the entire distance of wooden floor.

A. P. GRIMSHAW, Gen'l Supt.

APPROVED:  
 FRED H. BINDER, President.



JACOB MOERSCHEL.

ANDREAS MOERSCHEL.

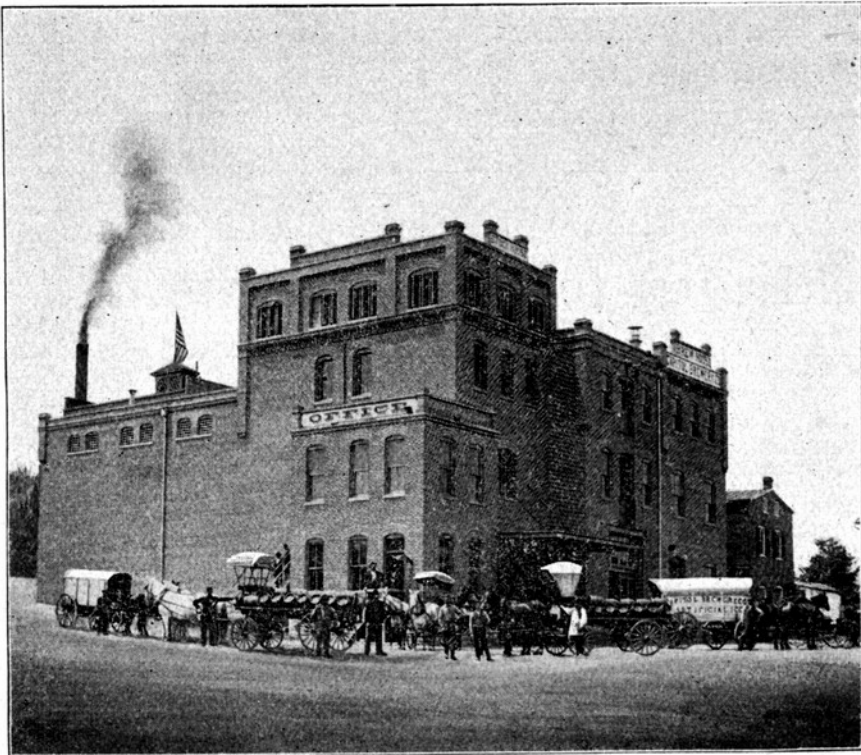
# MOERSCHEL BROS.,

PROPRIETORS OF THE

# Capitol Brewery Co.,

INCORPORATED 1892.

Brewers, Bottlers, Maltsters  
AND MANUFACTURERS.



Wholesale  
Dealers in **Artificial Ice**

## The Finest and Purest Beer

**BREWED IN THE WEST.**

Only Best Quality of Hops and Barley Malt used. It is recommended by the Physicians for Family Use on account of its **Purity and Strengthening** qualities.

Orders Promptly Attended to. Patronage Solicited.

118 West Dunklin, Jefferson City.

TELEPHONE No. 27.

(SEE PAGE 235.)



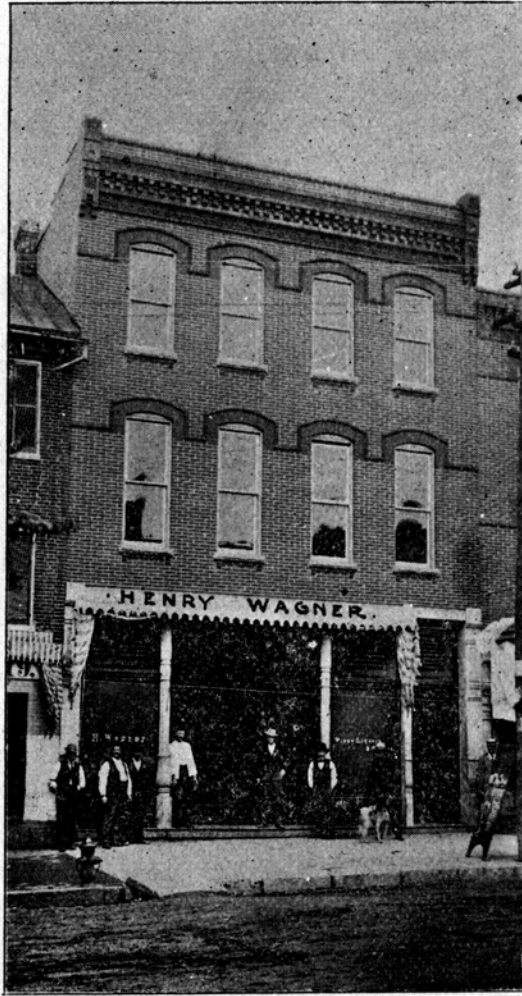
# HENRY WAGNER'S

## Saloon and Cafe

Finest  
Wines and  
Liquors,  
Foreign and  
Domestic.

.....

Best  
Brands of  
Foreign and  
Domestic  
Cigars.



In connection with the bar I have a First-class LUNCH COUNTER, which is open day and night. We make a Specialty of fixing up fine Lunch for all those who enjoy a day in the woods and for hunting or fishing parties on short notice.

Polite and Accommodating Bartenders.

221 EAST HIGH STREET,

Jefferson City,

Missouri.

WILLIAM R. MENTEER,  
 General Contractor and Builder

ESTIMATES FURNISHED UPON APPLICATION.  
 ALL WORK PROMPTLY ATTENDED TO.

OFFICE: Rear County Court House.

H. A. SWIFT ICE COMPANY

Wholesale and Retail

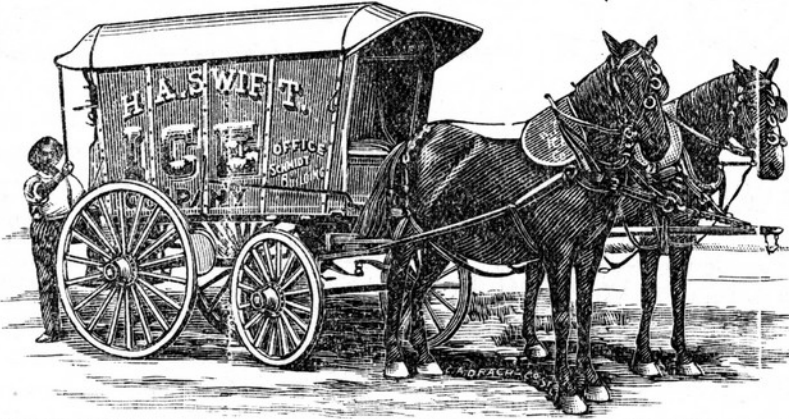
DEALERS IN

ICE

Office, 100 E. High,  
 Jefferson City, Mo.

STORAGE:

429 West Atchison, Mis-  
 souri Pacific and Osage  
 City.



WILLIAM K. WARREN,

DEALER IN

KINDLING WOOD

I will deliver wood to any part of the city for \$1.00  
 a load. Those desiring good kindling wood should  
 leave orders at

WEISER & ARTZ, Corner High and Monroe, Jefferson City, Mo.

E. SIMONSEN,

P. H. LOETHEN.

Jefferson Heating Co.

Contractors for Heating by

Hot Water, Steam and Hot Air

107 WATER ST.



ESTIMATES  
 CHEERFULLY GIVEN.

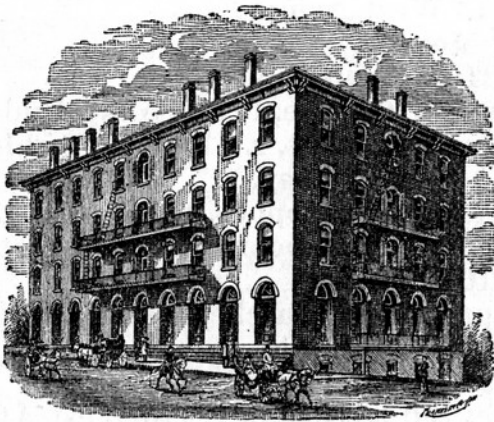
Jefferson City, Mo.

**D**O You Stop in the Capital ?  
City of Missouri . . . . . ?

**GOING EAST OR WEST?**

# The Madison Hotel

HAS THE MOST IDEAL LOCATION.



Under new management. In the heart of Business Center. First-class, and the largest Hotel in the city. Electric lights in every room. Commercial men will find the finest and largest Sample Rooms in the West at the Madison.



**Rates \$2 and \$2.50 Per Day.**

**A Trial Will Convince You.**



**BEN G. VIETH, Prop.**

Long Distance Telephone.



H. W. EWING, PRESIDENT, J. H. EDWARDS, SECRETARY, A. C. SHOUP, BUSINESS MGR.

∴ Tribune Printing ∴  
Company

High Class Printers and Lithographers  
Binders and Blank Book Makers.



\* PUBLISHERS OF \*

⇒ The Jefferson City Tribune, ⇐

OFFICIAL PAPER OF THE STATE.

217-219 Madison St.

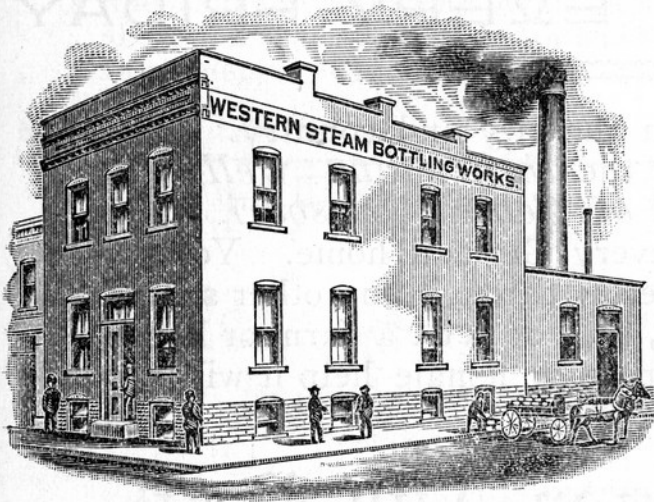
Jefferson City, Mo.



# W. F. ROESEN,

PROPRIETOR OF

## Western Bottling Works



Manufacturer of

Iron Phostone,  
Sarsaparilla,  
Strawberry,  
LEMON SOUR,  
Ginger Ale,  
LEMON SODA  
And Mineral Waters.

610 Jefferson,

Jefferson City, Mo.

## FERDINAND SCHLEER,

DEALER IN

# Stoves and Tinware

WE carry the largest and most complete line in the city, and those intending getting married or going to housekeeping should call and see our large stock before going elsewhere. We also handle a full line of Hardware.

Tin Roofing a Specialty.

108 EAST HIGH,

Jefferson City.



SOLE AGENT  
FOR THE

Bridge & Beach Superior Stoves.

# DAN GUNDELFINGER

\* ————— DEALER IN ————— \*

## Stoves, Hardware, Woodenware, Tinware and Cuttlery.



EXCLUSIVE AGENT FOR THE  
WIRE GAUZE CHARTER OAK STOVES  
AND  
Quick Meal Gasoline Stoves.

Wire Screen Doors and Windows, Water  
Coolers, Bird Cages, Freezers and Weather  
Strips. Call and see our stock.

117-119 EAST HIGH.

Jefferson City, Mo.

### My Doctor Told me to Drink Lemp's Pale Lager Beer

If I wanted to regain my lost flesh, and I at once  
followed his advice and found that he told the truth.



Before.

I Am Now Going to Take a Trip

And Wherever I go I Will Have a Good  
Word to Say for

### Wm. J. Lemp's Beer



After.

JACOB SCHMIDT, Agent,

601 WEST WATER ST., Jefferson City, Missouri.

# THE CASINO SALOON

FRANK HOERSCHEN, Proprietor.

Keeps constantly on hand the best brands of  
 Imported and Domestic Liquors and Best Brands of Cigars

111 EAST HIGH, Jefferson City, Missouri.

## JERSEY DAIRY

T. M. HAMPTON, Prop.

.....

### Fresh Dairy Products

Delivered to Any Part of the City.



TELEPHONE 52.

## J. G. PENINGER Livery & Feed Stable

.....

Special attention given to City  
 Livery. First-class Rigs.  
 Careful Drivers.

.....

315 JEFFERSON, Jefferson City, Mo.

# GEO. M. MAUS WILL MAKE AND REPAIR ALL KINDS OF FURNITURE.

Upholster, make and renovate Mattresses. Tents and Awnings  
 made and put up. Give me a trial.

*306 East High, Jefferson City, Mo.*



JACOB MOERSCHEL.

ANDREAS MOERSCHEL.

MOERSCHEL BROS.,

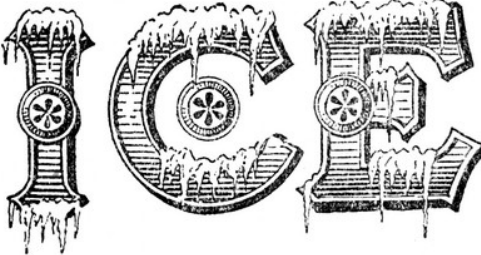
PROPRIETORS OF

Capitol Brewery Co.

INCORPORATED 1892.

MANUFACTURERS OF

Pure  
Artificial



Pure  
Artificial

Sickness is often brought on by the use of Impure Ice. Too much care cannot be taken to avoid this danger. The surest way is to use only the Manufactured Ice. We make our Ice from Condensed Steam, and it keeps as long, costs the same, and contains none of the impurities found in ice taken from ponds, etc. Delivered anywhere in the city at the usual price

118 WEST DUNKLIN.

JEFFERSON CITY, - - - MISSOURI.

TELEPHONE NO. 27.

M. R. SINKS.

F. W. TURNER.

## SINKS &amp; TURNER

\*—DEALERS IN—\*

## GROCERIES

Provisions, Produce, Etc.

Queensware,  
Glassware,  
Chinaware.

124-126 EAST HIGH.

*Jefferson City, Mo.*

W. A. MOORE.

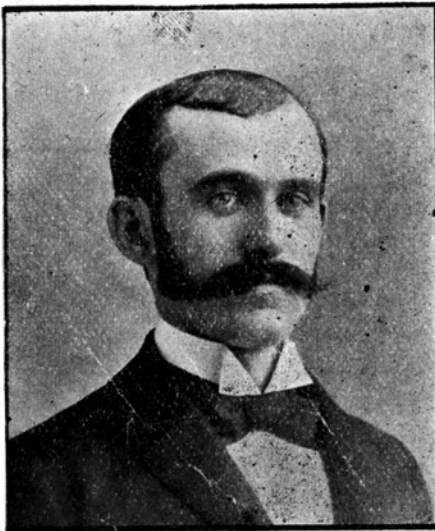
WALLER BOLTON, SR.

## MOORE &amp; BOLTON

## Livery and Feed Stable

Special Attention Given to City Livery. First-Class Rigs. Careful Drivers.

Cor. JEFFERSON AND McCARTY, Jefferson City, Mo.

G. P. ROSSMAN  
THE TAILOR.

MY STOCK INCLUDES ALL THE

Latest Styles and Novelties

In Foreign and Domestic Woolens.

CALL AND INSPECT OUR GOODS.

Your Patronage Solicited.  
Prices Reasonable. . . . . 202 E. HIGH ST.